



Doc ID: 004297400001 Type: GEN
Kind: CORNER
Recorded: 10/29/2010 at 09:05:00 AM
Fee Amt: \$9.00 Page 1 of 1
Black Hawk County Iowa
JUDITH A MCCARTHY RECORDER
File **2011-00008494**

Herold - Reicks Surveying, 10 East Main Street, New Hampton, IA 50659, Ph. 641-394-2725, Fax. 641-394-2718

UNITED STATES PUBLIC LAND SURVEY CORNER CERTIFICATE

Land Survey Monuments situated in Section **10**, Township **87** North, Range **14** West of the Fifth Principal Meridian, **Black Hawk** County, Iowa. Not previously recorded in the County Recorder's office.

This certificate is being prepared in compliance with Iowa Code Chapter 355.11 because:

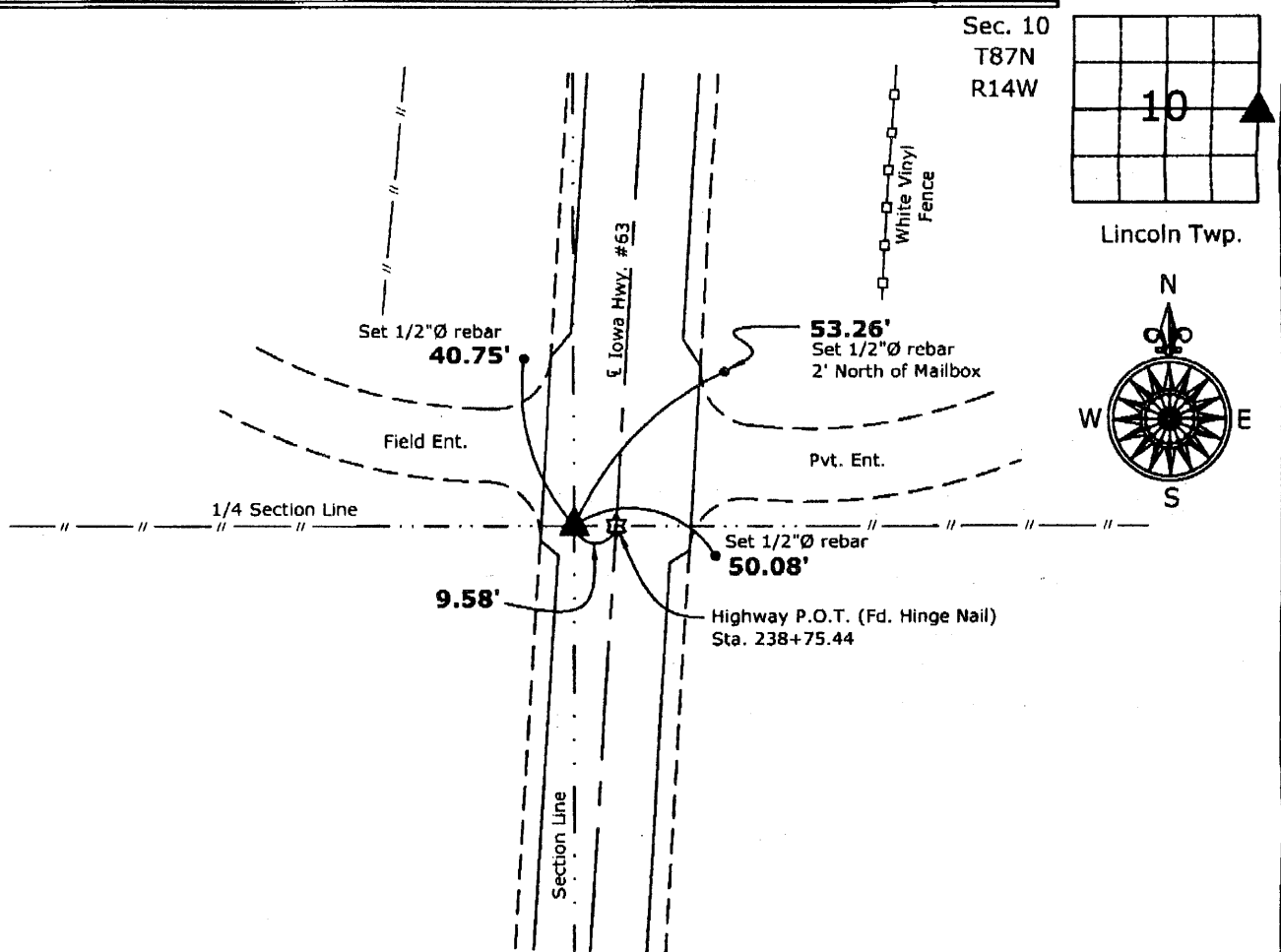
- ☒ There is no certificate on file for this corner.
☐ There are no longer three valid ties of record.
☐ There are changes to reference ties of record.
☐ There is change of monumentation of record.
☐ To clarify description of record monument (ties).

Monument Description and Remarks:

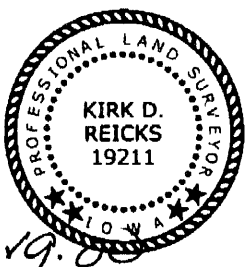
East 1/4 Corner: Set Survey Mark Nail with stainless steel washer PLS 19211 with information obtained from an I.D.O.T Land Corner Survey made by Marion L. Miller, signed Jan. 12, 1970, on file at the Office of Right-of-Way, Ames, IA. Reference - Project No. FN-63-6(2)--21-07.

PLAN - VIEW

(Show a minimum of three reference ties to durable physical objects, relevant monuments and physical conditions that will enable recovery of the corner.)



East 1/4 Corner Section 10-87-14
Set Survey Mark Nail w/stainless steel washer PLS 19211
(Sta. 238+74.88, 9.58' Lt.)



I hereby certify that this land surveying document was prepared and the related survey work was performed by me or under my direct personal supervision and that I am a duly licensed Land Surveyor under the laws of the State of Iowa.

Kirk D. Reicks 10-27-10
Kirk D. Reicks Date:

License number 19211
My license renewal date is December 31, 2010.
Sheets covered by this seal: Individual sheet only

List Corners to be Indexed			
Corners	Section	Twp.	Range
E 1/4	10	87	14
Project Number: 2010-147			
FB: Black Hawk County 1, Pgs. 11-12			