

RYKEN ENGINEERING
711 PARK AVE
ACKLEY IA 50601

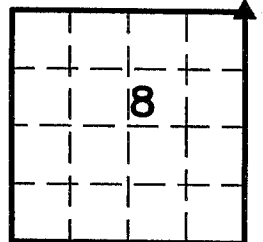
NS
P
Z

Document Number: 2008000441
Date: Jul 05, 2007 4:30:00 pm
Aud Fee: 0.00 Rec Fee: 5.00
Trans Tax: 0.00 Rec Management Fee: 1.00
E-Com Fee: 1.00 Non-Standard Page Fee: 0.00
Filed for record in Black Hawk County, Iowa
Judith A. McCarthy, County Recorder

Lee O. Gallentine LS, Ryken Engineering, 711 Park Avenue, Ackley, Iowa 50601 - Ph. 641-847-3273 - Fax 641-847-2303

UNITED STATES PUBLIC LAND SURVEY CORNER CERTIFICATE OF

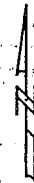
Land Survey Monuments, situated in Section 8, Township 87 North,
Range 14 West, of the Fifth Principal Meridian, Blackhawk County, Iowa,
Previously recorded in Not Applicable in County Recorder's Office



This certificate is being prepared because there are no certificates on file for this corner and this corner was used for a survey in this section for Frank L. Wyatt.

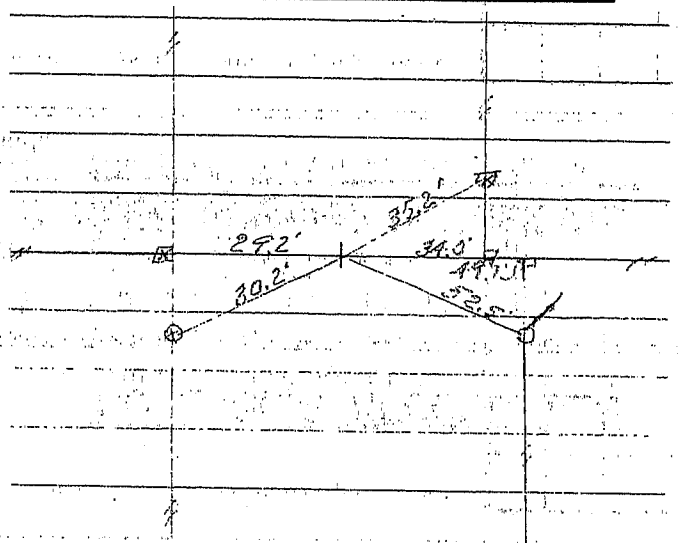
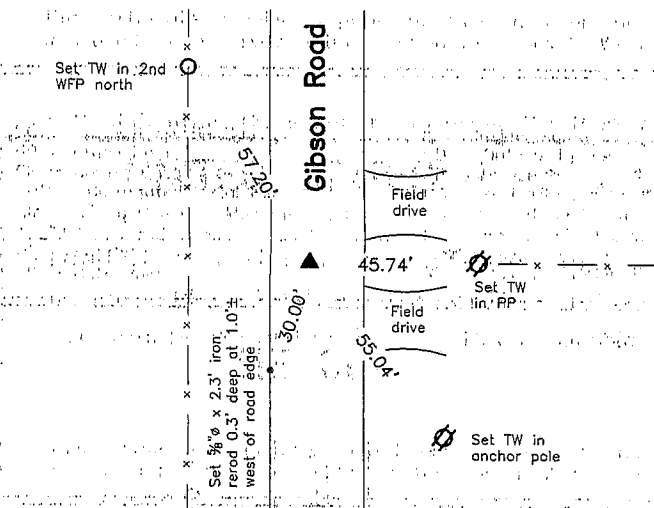
Legend

BC = Nail with Bottle Cap
BP = Brace Post
CP = Corner Post
CMP = Corrugated Metal Pipe
CM = 4" Sq Concrete Monument with
1/2" iron rod in center (tie to rod)
CX = Cut 'X'
GP = Gate Post
ID = Inside Diameter
OD = Outside Diameter
PP = Power Pole
PW = Nail with Plastic Washer
RCP = Reinforced Concrete Pipe
RH = Red Head (Nail in wire)
ROW = Right of Way
RW = Nail with Reflective Round Washer
R/W = Iron ROW Rail
SFP = Steel T Post
SW = Nail with Square Metal Washer
TP = Telephone Pedestal
TW = Nail with Round Metal Washer
WFP = Wood Fence Post
X = X Nails



NE Cor.

CO ENGR'S RECORD TIES



Monument Description, Remarks, and Plan View:

NE Cor. - Partial History of Corner = 1938, Sept. 16 - found limestone 16"x9"x8" and an old seeder shovel 1/2"x1 1/2"x19" and an wood stake 1"x2"x12" lowered evidence and set C.M. on top 12" below ground per Co Engr's Field Bk 1010 Pg. 20
Current Co Engr's records do not indicate type of monumentation at corner, but ties are as shown above
Corner Recovery = Searched area with metal detector, excavated 2.0' (E-W) x 1.5' (N-S) x 2.6' deep hole in-line with fence East and on a line from the E 1/4 Cor through centerline bridge south of the NE Cor and found 4" x 4" concrete monument with brass cap stamped '4', '5', '8', and '9' 2.4' deep with 1/2" x 1 3/4" iron pin 2.4' deep on northwest side of concrete monument (for location purposes only) at 2.0' ± West of centerline of gravel road N-S and in-line with fenceline East. Monument found matches that of record and location of monument found matches roadway and fenceline evidence well. Therefore, drove pin to 2.5' deep for locating purposes only, placed pink plastic cased magnet on North side of concrete monument below top of concrete monument for locating purposes only, set 3/4" x 2.0' Alum Capped Iron Rod (#15745) stamped '4', '5', '8', and '9' on center of brass cap to raise up monumentation, and used rod as the correct corner. All ties are plumb distance unless indicated otherwise.

p:\BOB\BLACKHAWKCO\S88717\WYATT4300\dwg\4300concert.dwg



I hereby certify that this land surveying document was prepared and the related survey work was performed by me or under my direct personal supervision and that I am a duly licensed Land Surveyor under the laws of the State of Iowa.

LEE O. GALLENTINE, LS
Date: June 8, 2007 License number: 15745
My license renewal date is December 31, 2008

Pages or sheets covered by this seal: 1

List Corners to be Indexed

Corners	Section	Twp	Range
NE Cor.	8	T87N	R14W