

2024-14917  
RECORDED: 05/29/2024 02:35:28 PM  
RECORDING FEE: \$7.00  
IOWA E-FILING FEE: \$3.00  
COMBINED FEE: \$10.00  
REVENUE TAX: \$0.00  
SANDIE L. SMITH, RECORDER  
BLACK HAWK COUNTY, IOWA

Prepared by & Return to: Christopher C. Sweeney, HRS, LLC, 2206 East Bremer Avenue, Waverly, IA 50677, Phone 319-483-5187

United States Public Land Survey Corner Certificate

Land Survey Monument situated in  
Section 7, Township 87 North, Range 14 West of the Fifth Principal Meridian, **Black Hawk** County, Iowa.  
Not on file in the County Recorder's Office.

This certificate is being prepared in compliance with Iowa Code Chapter 355.11 because:

- ☒ There is no certificate on file for this corner.
- ☐ There are no longer three valid ties of record.
- ☐ There are changes to reference ties of record.
- ☐ There is change of monumentation of record.
- ☐ To clarify description of record monument (ties).

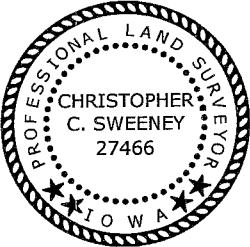
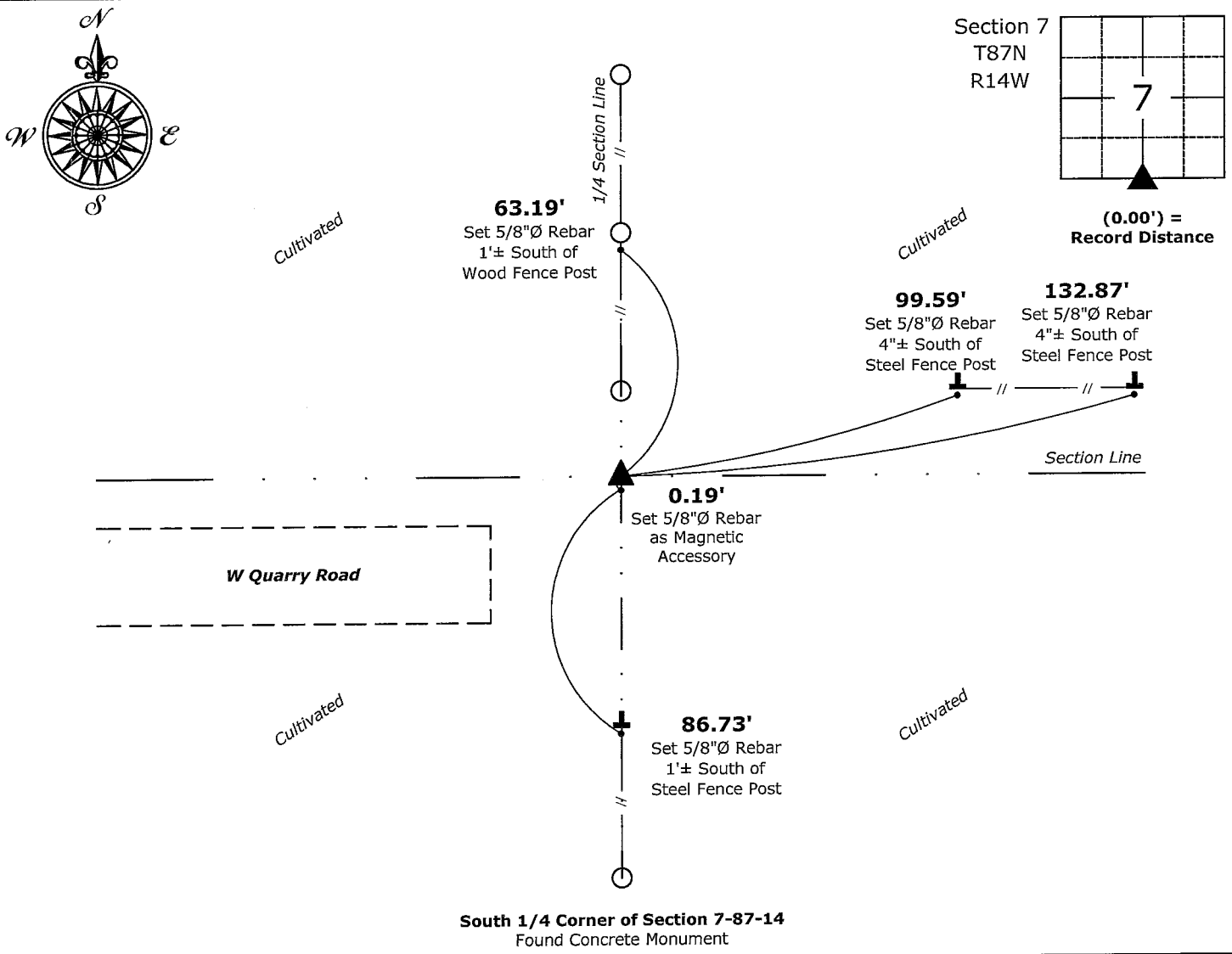
Monument Description and Remarks:

South 1/4 Corner:

Found Concrete Monument with information obtained from the County Engineer's W.P.A. Ties on file in the County Engineer's Office. Set 5/8"Ø Rebar on South side of Concrete Monument as a Magnetic Accessory only.

Plan View - Not to Scale

(Show a minimum of three reference ties to durable physical objects, relevant monuments and physical conditions that will enable recovery of the corner.)



I hereby certify that this land surveying document was prepared and the related survey work was performed by me or under my direct personal supervision and that I am a duly licensed Land Surveyor under the laws of the State of Iowa.

*Christopher C. Sweeney* 5-24-2024  
Christopher C. Sweeney Date:

License number 27466  
My license renewal date is December 31, 2025  
Sheets covered by this seal: Individual sheet only

List Corner to be Indexed

Corner	Section	Township	Range
S 1/4	7	87	14

Project Number: 2024-542

FB: Black Hawk 12, Page(s) 14-16