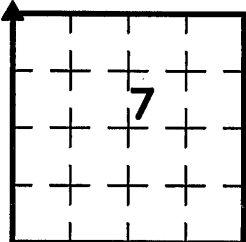


Zeb J. Stanbrough PLS, Ryken Engineering, 739 Park Avenue, Ackley, Iowa 50601 - Ph. 641-847-3273 - Fax 641-847-2303

UNITED STATES PUBLIC LAND SURVEY CORNER CERTIFICATE OF

Land Survey Monuments situated in Section 7, Township 87 North, Range 14 West, of the Fifth Principal Meridian, Black Hawk County, Iowa, Previously recorded in Not Applicable in County Recorder's Office

These corners were used for a survey in Section 7, T87N, R15W for Grundy County Engineer and not recorded at the date of survey, which was recently brought to this surveyor's attention. Basis of bearing for this corner cert. can be found on the associated plat of survey filed in the County Recorder's Office for this section.

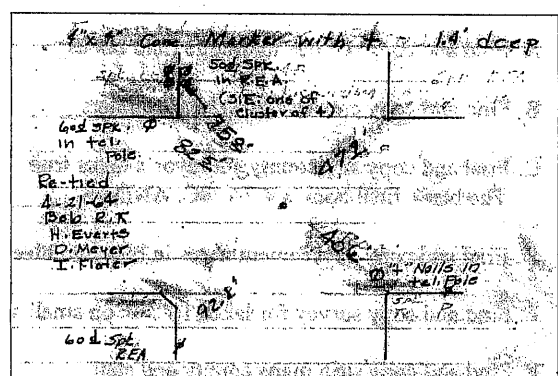
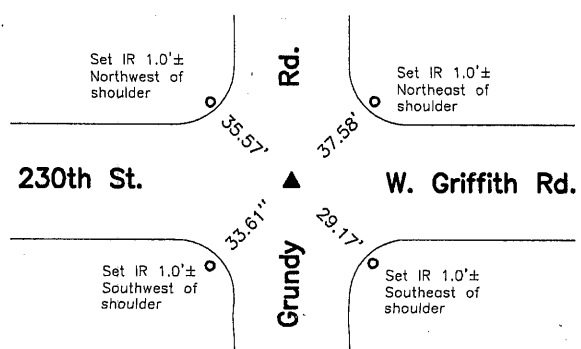


- Legend**
- | | | |
|---|---|---|
| BC = Iron Nail with Bottle Cap | ID = Inside Diameter | R/W = Iron ROW Rail |
| BP = Brace Post | OD = Outside Diameter | SFP = Steel 'T' Post |
| CP = Corner Post | PP = Power Pole | SW = Iron Nail with Square Metal Washer |
| CMP = Corrugated Metal Pipe | PW = Iron Nail with Plastic Washer | TP = Telephone Pedestal |
| CM = 4" Sq Concrete Monument with 1/2"Ø iron rerod in center (tie to rerod) | RCP = Reinforced Concrete Pipe | TW = Iron Nail with Round Metal Washer |
| CX = Cut 'X' | RH = Red Head (Iron Nail in wire) | WFP = Wood Fence Post |
| GP = Gate Post | RW = Iron Nail with Reflective Round Washer | X = Iron "X" Nails |
| IR = 5/8"Ø x 2.0' Iron Rerod Flush | ROW = Right of Way | |



NW Cor.

Grundy County Engineer's Record Ties



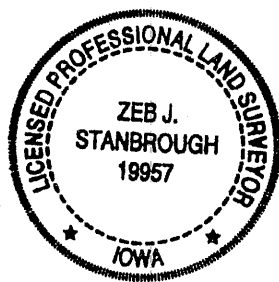
- NW Cor. - History of Corner =**
- 1867, Jun. 26 - 'mond Stone in old mond' by John Ball County Surveyor per Black Hawk County Engineer's Survey Record Book 1, Page 223.
 - 1884, Apr. 10 - 'Stone & Stake' by John Ball County Surveyor per Black Hawk County Engineer's Survey Record Book 1, Page 611.
 - No Date - Grundy County Engineer's Railroad Strip Map indicates usage of corner but not type of monumentation at corner.
 - No Date - "F" per Black Hawk County Engineer's Surveyor's Record Book 1, Page 114.
 - No Date - "Limestone" per Black Hawk County Engineer's Field Book 91, Page 22.
 - 1933, Aug. 1 - 'Stone' per Grundy County Engineer's Field Book 188, Page 21.
 - 1935 - 'Pin' per Grundy County Engineer's Field Book 226, Page 27
 - 1936, Jun. 19 - Black Hawk County Engineer's Field Book 163, Pages 56 and 58 indicate usage of corner but not type of monumentation at corner.
 - 1938, Sep. 12 - 'found lime stone 5"x9"x9" and iron bar 1/2"x20" also oak hub 2"x2"x8" one oak hub very rotten lowered stone and set C.M. on top 12" underground' per Black Hawk County Engineer's W.P.A. Field Book 1010, Page 15.
 - 1947, - Grundy County Engineer's Field Book 430, Page 21 indicates usage of corner but not type of monumentation at corner.
 - 1993, Oct. 15 - Black Hawk County Recorder's Book 308, Page 518 indicates usage of corner but not type of monumentation at corner.
 - 1997, Mar. 28 - 'FOUND CONCRETE MONUMENT W/BRASS CAP...SET NO. 4 REBAR ABOVE' by Paul H. Helland per Grundy County Recorder's Book 73-D, Page 250.

Previous Black Hawk County Engineer's ties indicate that corner is monumented with: 'Found limestone & l-bar Mon 18" deep', 'Found limestone 5" x 9" x 9" and Iron bar 1/2" x 20" also oak hub 2" x 2" x 8" one very rotten oak hub. Set C.M. on top 12" deep.' on Sep. 12, 1938. Usage on Jul. 24, 1944.

Current Grundy County Engineer's ties indicate that corner is monumented with: '4" x 4" Conc. Marker with + 1.4' deep' 'Re-tied" on Apr. 21, 1964 with ties as shown above.

Corner Recovery =
Searched 5.0'Ø area around the intersection point of the apparent centerlines of gravel roads North-South and East-West with metal detector, excavated 1.0'Ø x 1.7' deep hole and found 1/2"Ø x 0.8' orange capped iron rerod (#6505), 0.8' deep leaning East. Tied out rerod, removed it and found 4" x 4" brass capped concrete monument stamped '1', '6', '7', and '12', 1.6' deep. Concrete monument is in apparent centerline of traveled surface of gravel roads East-West and North-South. Monuments found matches that of record, but rerod appears to have been disturbed. Therefore, reset rerod (plumb), 0.8' deep on center of brass cap to raise up monumentation and used it as the correct corner. All ties are plumb distance unless indicated otherwise.

This certificate is being prepared because there are no certificates on file for this corner.



I hereby certify that this land surveying document was prepared and the related survey work was performed by me or under my direct personal supervision and that I am a duly licensed Land Surveyor under the laws of the State of Iowa.

Zeb J. Stanbrough PLS
Zeb J. Stanbrough, PLS
Date: 10-24-2013 License number: 19957
My license renewal date is December 31, 2013
Pages or sheets covered by this seal: 1

| Corners to be Indexed | | | |
|-----------------------|---------|------|-------|
| Corners | Section | Twp | Range |
| NW Cor. | 7 | T87N | R14W |

7-DD-SB