

Jeffrey P. Helland, 1107 Technology Parkway, Cedar Falls, Iowa 50613-6951, (319)-266-0161

UNITED STATES PUBLIC LAND SURVEY CORNER CERTIFICATE
OF

LAND SURVEY MONUMENTS SITUATED IN SECTION NO. 6, TOWNSHIP NO. 87 NORTH, RANGE NO. 14 WEST OF THE FIFTH PRINCIPAL MERIDIAN, BLACK HAWK COUNTY, IOWA.
PREVIOUSLY RECORDED IN _____

(SHOW REASON FOR PREPARING THIS CERTIFICATE, THE EVIDENCE AND DETAILED PROCEDURES USED IN ESTABLISHING THE CORNER POSITIONS AND MONUMENTATION FOUND OR PLACED.)

MONUMENT DESCRIPTION AND REMARKS:

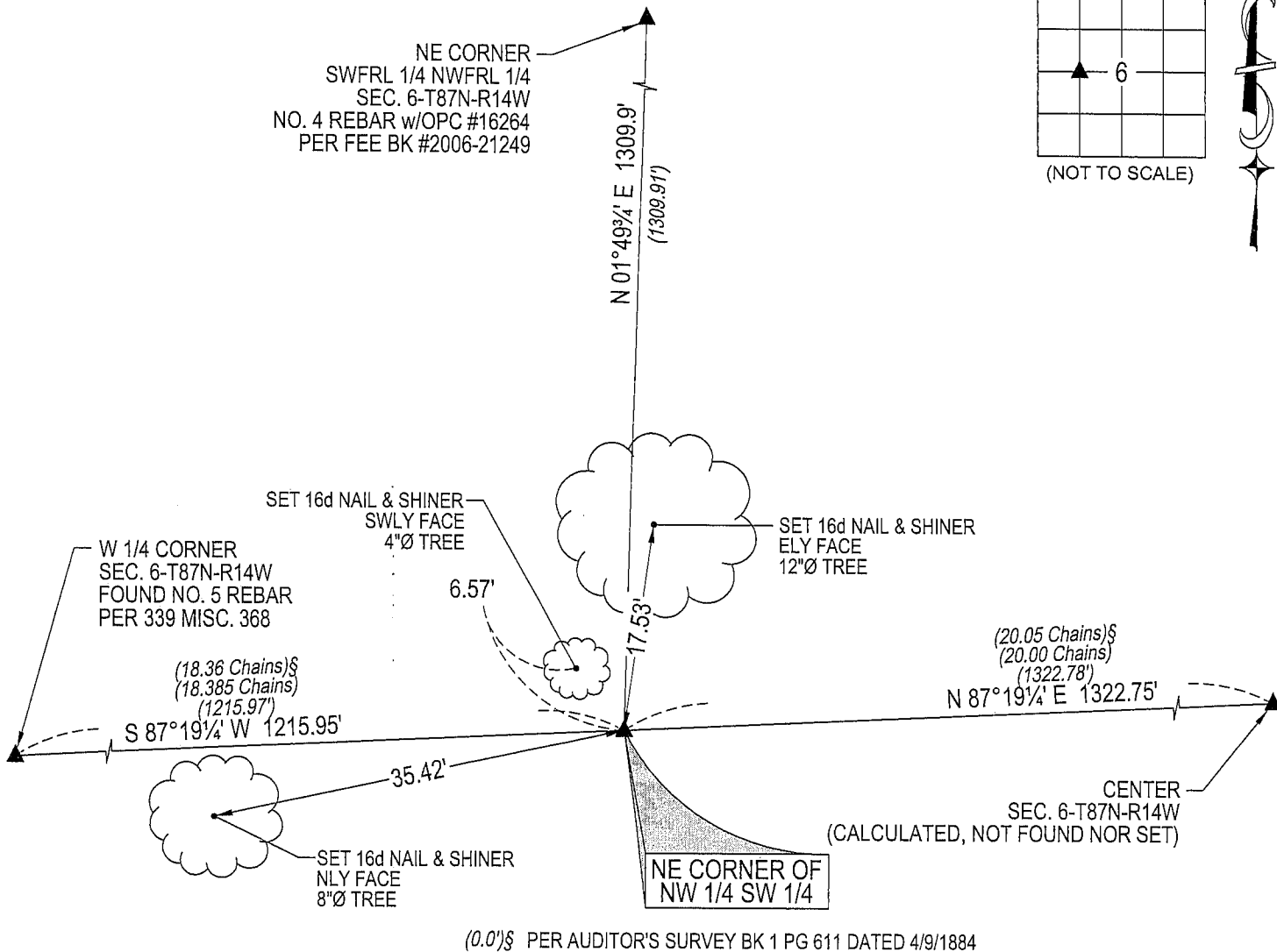
NO USPLSCC ON FILE.

SURVEY COMPLETED IN THE SWFRL 1/4 OF SEC. 31-T88N-R14W AND THE NWFRL 1/4 OF SEC. 6-T87N-T14W.

NE CORNER OF NWFRL 1/4 SWFRL 1/4: AUDTIO'S SURVEY BK 1 PG 611 DATED 4/9/1884 CALLS FOR [STAKE]. NO BLACK HAWK COUNTY ENGINEER REFERENCE TIES AVAILABLE. PLAT OF SURVEY BY F. WILLIAM KING #8033 DATED 7/18/2000 RECORDED IN 339 MISC. 363 CALLS FOR [COMPUTED CORNER]. SET NO. 4 REBAR W/OPC #16264 ON LINE BETWEEN THE W 1/4 CORNER AND THE CENTER PER SAID PLAT OF SURVEY. REFER TO PLAT OF SURVEY DATED 2/27/2006 RECORDED IN FEE BK #2006-20793.

PLAN VIEW

(SHOW A MINIMUM OF THREE REFERENCE TIES TO DURABLE PHYSICAL OBJECTS, RELEVANT MONUMENTS AND PHYSICAL CONDITIONS THAT WILL ENABLE RECOVERY OF THE CORNER.)



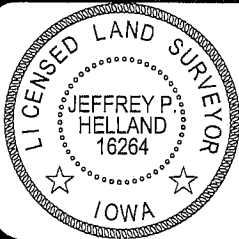
(BEARINGS ARE BASED UPON GEODETIC NORTH)



HELLAND ENGINEERING & SURVEYING, LTD.
1107 Technology Parkway
Cedar Falls, Iowa 50613-6951
(319)-266-0161

SHINER = 8D NAIL & 1 15/16"Ø METAL SHINER
OPC = PLASTIC CAP (O=ORANGE, R=RED, Y=YELLOW)

(00') RECORDED AS FILE NAME: 06-133C2.DWG



I hereby certify that this land surveying document was prepared and the related survey work was performed by me or under my direct personal supervision and that I am a duly licensed Land Surveyor under the laws of the State of Iowa.

Jeffrey P. Helland 6/26/06
Jeffrey P. Helland
License Number 16264
My license renewal date is December 31, 2007.
All pages or sheets are covered by this seal except:

LIST CORNERS TO BE INDEXED

CORNER	SECTION	TOWNSHIP	RANGE
NE CORNER NW 1/4 SW 1/4	6	87N	14W