

SC  
MISC  
INDEX MRF  
MARGIN  
PROOF  
COMPARE

BLACK HAWK COUNTY IOWA:SS 12302  
FILED FOR RECORD DEC 3, 1999 AT  
3:00 P. M. AND RECORDED IN BOOK 336  
OF MISC PAGE 549  
*Patricia J. Soss* RECORDER  
FEE 1-5.00X  
HELLAND ENGINEERING & SURVEYING

Paul H. Helland, 1107 Technology Parkway, Cedar Falls, Iowa 50613-6951, (319)-266-0161

## UNITED STATES PUBLIC LAND SURVEY CORNER CERTIFICATE OF

LAND SURVEY MONUMENTS SITUATED IN SECTION NO. 3, TOWNSHIP NO. 87 NORTH, RANGE  
NO. 14 WEST OF THE FIFTH PRINCIPAL MERIDIAN, BLACK HAWK COUNTY, IOWA.

PREVIOUSLY RECORDED IN BOOK \_\_\_\_\_, PAGE \_\_\_\_\_.

(SHOW REASON FOR PREPARING THIS CERTIFICATE, THE EVIDENCE AND DETAILED PROCEDURES USED IN ESTABLISHING THE  
CORNER POSITIONS AND MONUMENTATION FOUND OR PLACED.)

### MONUMENT DESCRIPTION AND REMARKS:

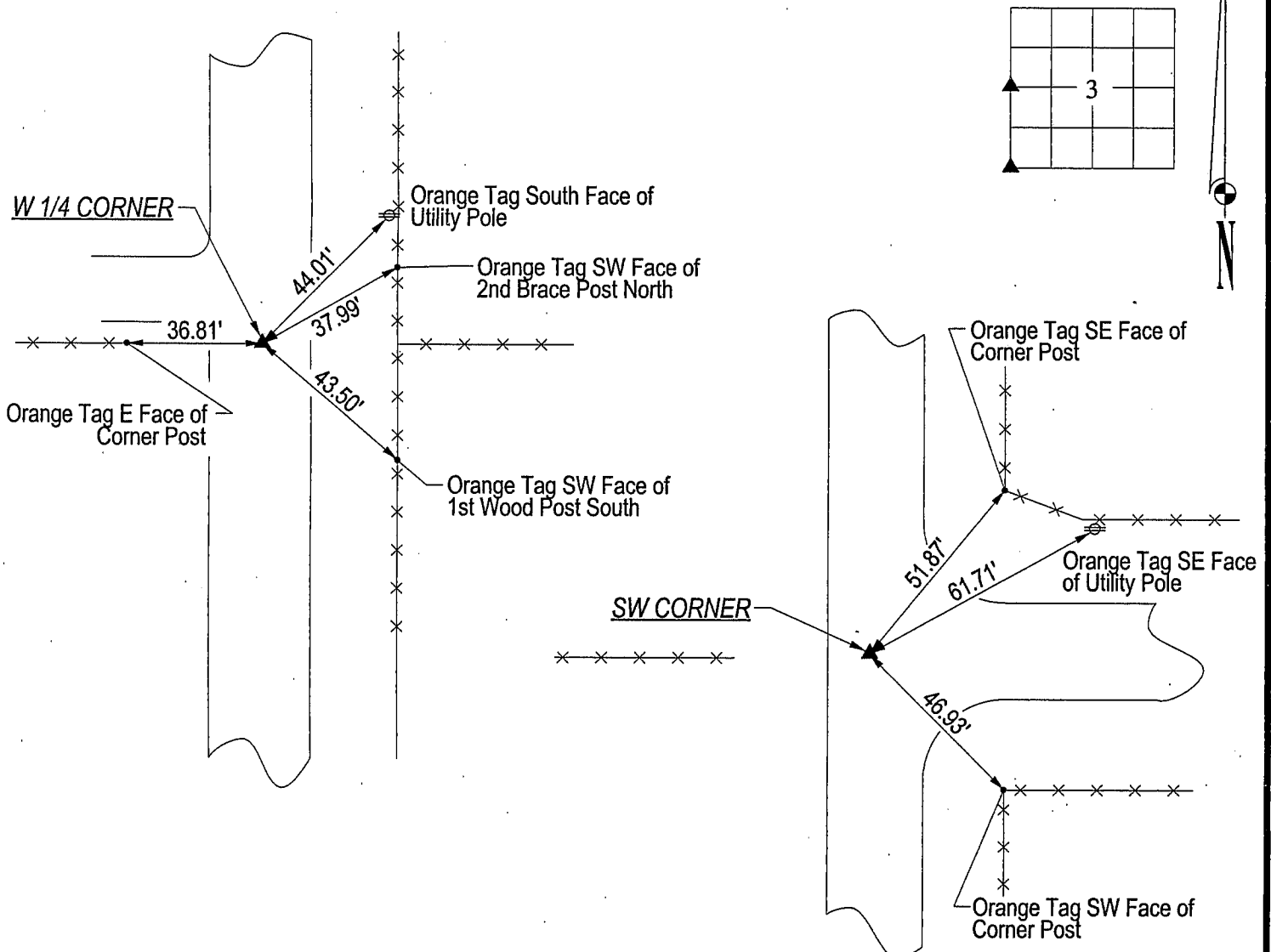
SURVEY DONE IN SW 1/4 OF SEC. 3-T87N-R14W

W 1/4 CORNER: FOUND NO. 4 REBAR 0.3' DEEP.

SW CORNER: FOUND CONCRETE MONUMENT W/BRASS CAP 1.0' DEEP, SET NO. 4 REBAR ON NORTH EDGE  
FOR MAGNETIC DETECTION. CORNER IS 1' NORTH OF FENCE RUNNING WEST.

### PLAN VIEW

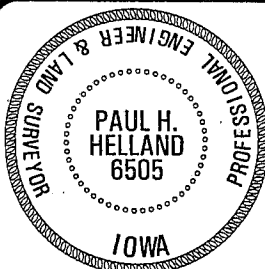
(SHOW A MINIMUM OF THREE REFERENCE TIES TO DURABLE PHYSICAL OBJECTS, RELEVANT MONUMENTS AND PHYSICAL  
CONDITIONS THAT WILL ENABLE RECOVERY OF THE CORNER.)



**HES**

HELLAND ENGINEERING & SURVEYING, LTD.  
1107 Technology Parkway  
Cedar Falls, Iowa 50613-6951  
(319)-266-0161

FILE NAME: 99-249CC.DRG



I hereby certify that this land surveying document was prepared  
and the related survey work was performed by me or under my  
direct personal supervision and that I am a duly licensed Land  
Surveyor under the laws of the State of Iowa.

*Paul H. Helland 12/1/99*  
Paul H. Helland  
License Number 6505  
My license renewal date is December 31, 1999.  
All pages or sheets are covered by this seal except:

### LIST CORNERS TO BE INDEXED

| CORNER | SECTION | TOWNSHIP | RANGE |
|--------|---------|----------|-------|
|--------|---------|----------|-------|

|              |   |     |     |
|--------------|---|-----|-----|
| W 1/4 CORNER | 3 | 87N | 14W |
| SW CORNER    | 3 | 87N | 14W |

Rec

336 PAGE 549