



PREPARED BY
AND RETURN THIS ORIGINAL DOCUMENT TO:
JON MYERS PLS
IOWA DEPARTMENT OF TRANSPORTATION
DISTRICT 1 OFFICE
1020 SOUTH 4TH STREET
AMES, IOWA 50010
PHONE 515-239-1593

RESERVED FOR COUNTY RECORDER'S USE

Number: 202400006571
Recorded: 11/17/2023 at 1:40:22.0 PM
County Recording Fee: \$7.00
Iowa E-Filing Fee: \$3.00
Combined Fee: \$10.00
Revenue Tax:
Sandie L. Smith, RECORDER
Black Hawk County, Iowa

UNITED STATES PUBLIC LAND SURVEY CORNER CERTIFICATE

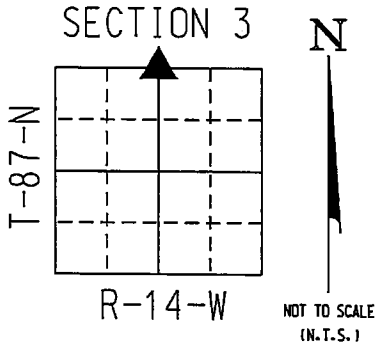
Land Survey Monument(s) situated in Section 3, Township 87 North, Range 14 West, of the Fifth Principal Meridian, BLACKHAWK County, Iowa. IDOT Project NHSN-063-5(64)--2R-86
Previously recorded in N/A in the County Recorder's Office.

N 1/4 CORNER 3-87-14:

NO CORNER CERTIFICATE OF RECORD FOUND FOR THIS CORNER. BOTH IDOT AND BLACKHAWK COUNTY ENGINEERING TIES SHOW THIS CORNER TO BE A 4" x 4" WPA CONCRETE MONUMENT WITH BRASS DISC IN CENTER. ALL TIES FROM PRIOR REFERENCES ARE GONE.

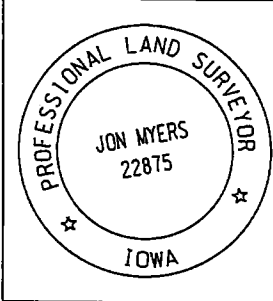
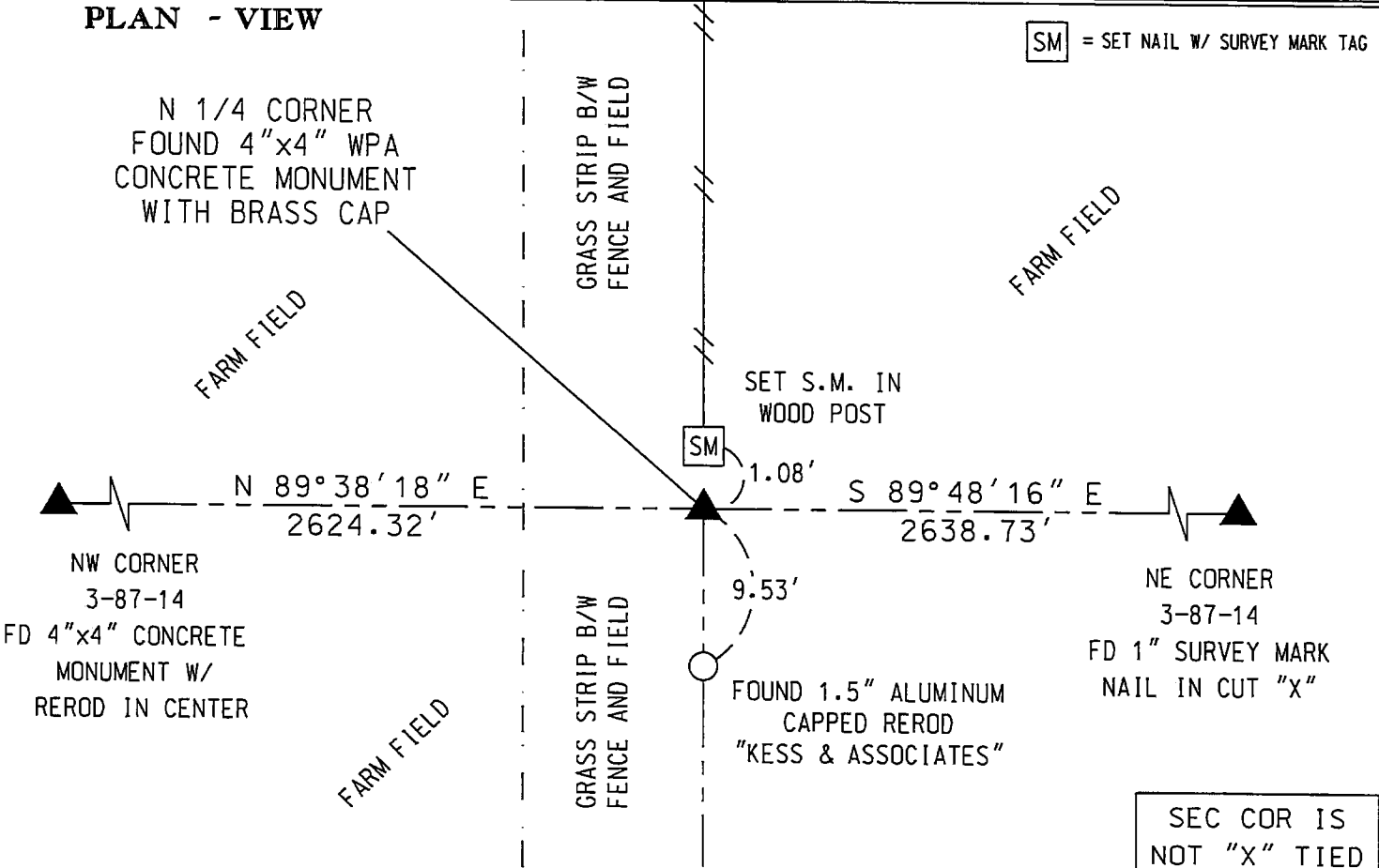
STAKED ON A LINE FROM NW CORNER TO NE CORNER AND FOUND A 1.5" DIAMETER ALUMINUM CAPPED REROD "KESS & ASSOCIATES" FLUSH WITH TOP OF GRASS IN OLD FENCE LINE WIRE RUNNING NORTH/SOUTH. NO RECORD OF "KESS" MONUMENT FOUND DURING CORNER RESEARCH - BUT DUG DOWN 12" AROUND "KESS" MONUMENT - REMOVED AND TILE PROBED UNDERNEATH TO A DEPTH OF 36" BUT DID NOT HIT HARD MONUMENT OR HIT ANYTHING THAT INDICATED THE REROD WAS SET OVER TOP OF ANYTHING. RESET MONUMENT BACK IN ITS ORIGINAL POSITION AND CONTINUED TO DIG TRENCH ALONG OLD FENCE LINE WIRE - 6" ON EACH SIDE OF FENCELINE WIRE UNTIL WE DISCOVERED SAID WPA MONUMENT 2" DEEP - 1 FOOT +/- SOUTH OF END POST ON FENCELINE THAT CONTINUES TO THE NORTH. FOUND CORNER MATCHES THE MONUMENT CALLED FOR IN PRIOR ENGINEERING REFERENCE TIES AND ACCEPTED FOUND CONCRETE MONUMENT AS THE N 1/4 CORNER.

A NEW CORNER CERTIFICATE IS CREATED BECAUSE THERE IS NONE ON FILE WITH THE BLACKHAWK COUNTY RECORDER'S OFFICE.



COORDINATE VALUE WAS ESTABLISHED UTILIZING NAD83 (2011)(EPOCH 2010) DATUM USING THE IOWA REGIONAL COORDINATE SYSTEM ZONE 5 PROJECTION IN U.S. SURVEY FEET
N 1/4 CORNER - #8035
N - 8803374.1550
E - 15441704.8370

PLAN - VIEW



I hereby certify that this Land Surveying document was prepared by me or under my direct personal supervision and that I am a duly licensed Professional Land Surveyor under the laws of the State of Iowa.
Signature: Jon Myers
Date: November 8, 2023 Lic. No. 22875
My license renewal date is December 31, 2024.
Pages or sheets covered by this seal. 1

- = FND CORNER
- = SET 5/8 REROD
- ◻ = FND CONC. MON.
- ⌂ = FD IDOT RAIL
- ⦿ = FD/SET IDOT PI

SEC COR IS NOT "X" TIED		
Corner to be Indexed		
N 1/4 COR		
Sec.	Twp.	Range
3	87	14
Drawn by: JMM		