

WAYNE CLAASSEN ENGINEERING AND SURVEYING, INC.
P.O. BOX 898 WATERLOO, IOWA 50704-0898

PHONE: (VOICE) 319-235-6294
(FAX) 319-235-0028

UNITED STATES PUBLIC LAND SURVEY CORNER CERTIFICATE

Land Survey Monuments situated in Section 01, Township 87 North, Range 14 West, of the Fifth Principal Meridian, Black Hawk County, Iowa.

Previously recorded in _____ in County Recorder's Office.
(book, page, document number, etc.)

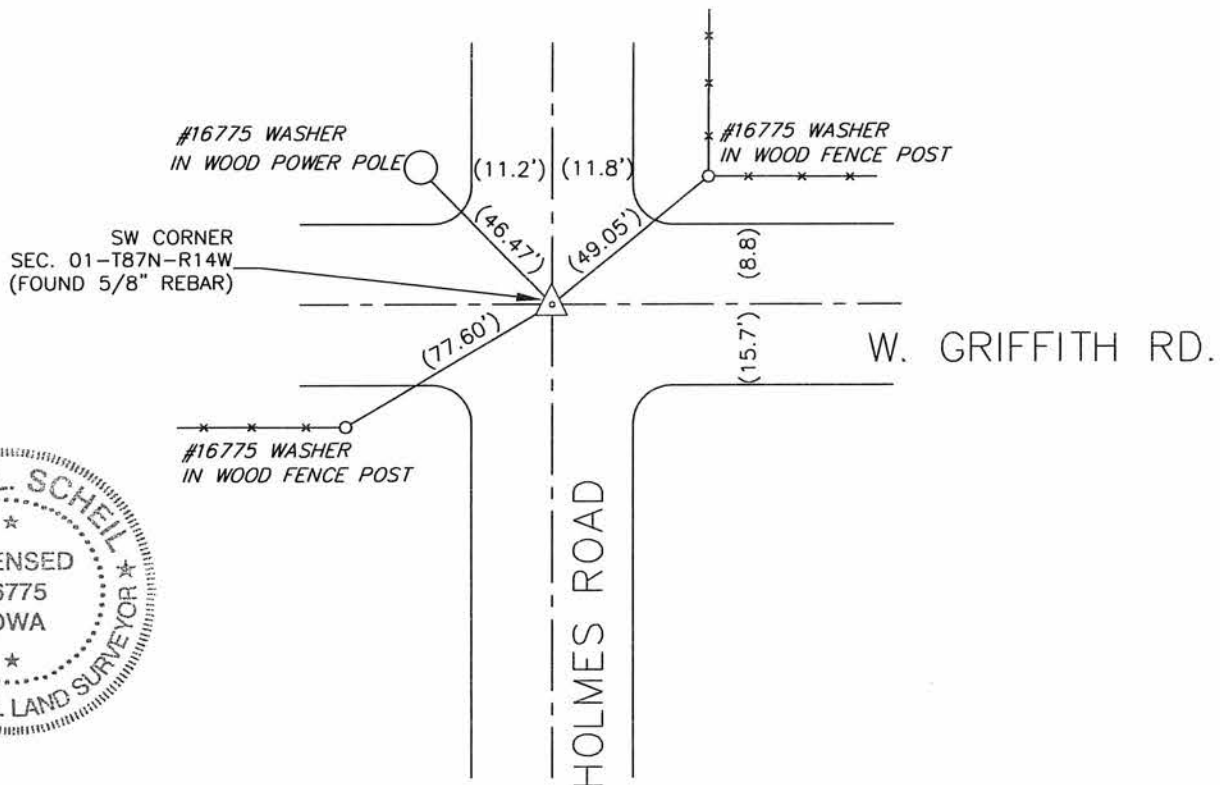
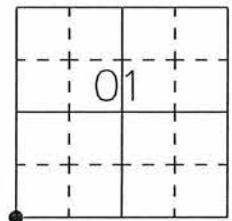
Monument Description and Remarks

Went to location of Southwest corner and found 8" spike 2" below surface. Removed 8" spike and found 5/8" rebar about 13" below surface. Dug around 5/8" rebar and did not find S.C.M. referenced in WPA noted from the Black Hawk County Recorder's Office.

PLAN - VIEW

Reason for filing certificate:

- ☒ There is no certificate on file with the Recorder's Office.
☐ Accepts corner position which differs from the one shown in above document.
☐ The corner monument was replaced or modified.
☐ The reference ties in above document were incorrect or missing.



607-38

I hereby certify that this land surveying document was prepared and the related survey work was performed by me or under my direct personal supervision and that I am a duly Licensed Land Surveyor under the laws of the State of Iowa.

Signature: David L. Scheil
David L. Scheil, L.S.

Date: Aug. 31, 2015 Lic. No. 16775

Pages or Sheets Covered by this Seal: THIS SHEET ONLY.

My license renewal date is December 31, 2016

SEAL

List Corners to be Indexed

Corners	Section	Twp	Range
SW CORNER,	01	87 N	14 W
SE CORNER,	02	87 N	14 W
NE CORNER,	11	87 N	14 W
NW CORNER,	12	87 N	14 W