

WAYNE CLAASSEN ENGINEERING AND SURVEYING, INC.  
P.O. BOX 898 WATERLOO, IOWA 50704-0898

PHONE: (VOICE) 319-235-6294  
(FAX) 319-235-0028

## UNITED STATES PUBLIC LAND SURVEY CORNER CERTIFICATE

Land Survey Monuments situated in Section 01, Township 87 North, Range 14 West, of the Fifth Principal Meridian, Black Hawk County, Iowa.

Previously recorded in Misc. Book 336-874 in County Recorder's Office.  
(book, page, document number, etc.)

### Monument Description and Remarks

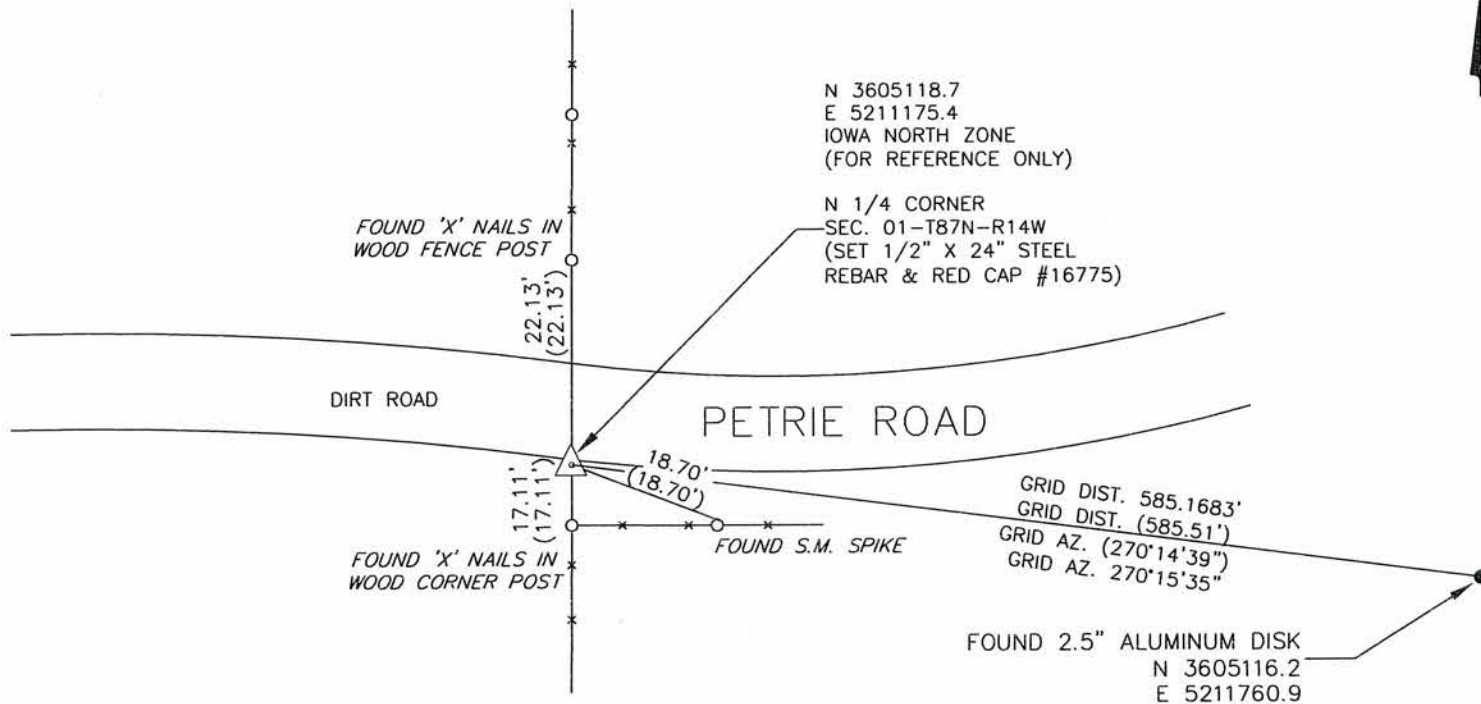
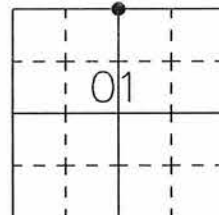
Went to location of North 1/4 corner and could not find tack. Found S.C.M. leaning. Set 1/2"x24" rebar and red cap #16775 at intersection of ties from above Corner Certificate. Leaning S.C.M. is 0.7' South of set pin and cap.

000.00 DENOTES RECORD DIMENSION  
FROM MISC. BOOK 336-874  
(000.00) DENOTES FIELD DIMENSION

### PLAN - VIEW

#### Reason for filing certificate:

- ☐ There is no certificate on file with the Recorder's Office.
- ☐ Accepts corner position which differs from the one shown in above document.
- ☒ The corner monument was replaced or modified.
- ☐ The reference ties in above document were incorrect or missing.



607-37

I hereby certify that this land surveying document was prepared and the related survey work was performed by me or under my direct personal supervision and that I am a duly Licensed Land Surveyor under the laws of the State of Iowa.

Signature: David L. Scheil  
David L. Scheil, L.S.

Date: AUG. 31, 2015 Lic. No. 16775

Pages or Sheets Covered by this Seal: THIS SHEET ONLY.

My license renewal date is December 31, 2016

SEAL

#### List Corners to be Indexed

Corners	Section	Twp	Range
N 1/4 CORNER,	01	87 N	14 W
S 1/4 CORNER,	36	88 N	14 W

