

* CERTIFICATES FROM BOOK 319 pgs. 832, 873,
+ 872 are double f.led. All the same, held
3A:882.

SC ✓
Misc ✓ BLACK HAWK COUNTY IOWA: SS

163-15

SC ✓
Misc ✓ INDEXED
MADEIN
PROOF of
COMPARE
BLACK HAWK COUNTY IOWA: SS
Filed for record Mar 14, 1996 at
11:55 A.M. and recorded in Book 319
of Misc Page 882

163-15

Recorder
Fee 1-5.00/

Paul H. Helland 2322 W 1ST ST SUITE B CEDAR FALLS, IOWA 50613 (319) 266-0161

UNITED STATES PUBLIC LAND SURVEY CORNER CERTIFICATE
OF

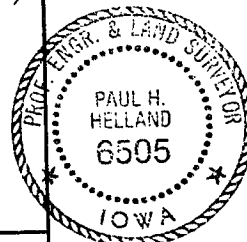
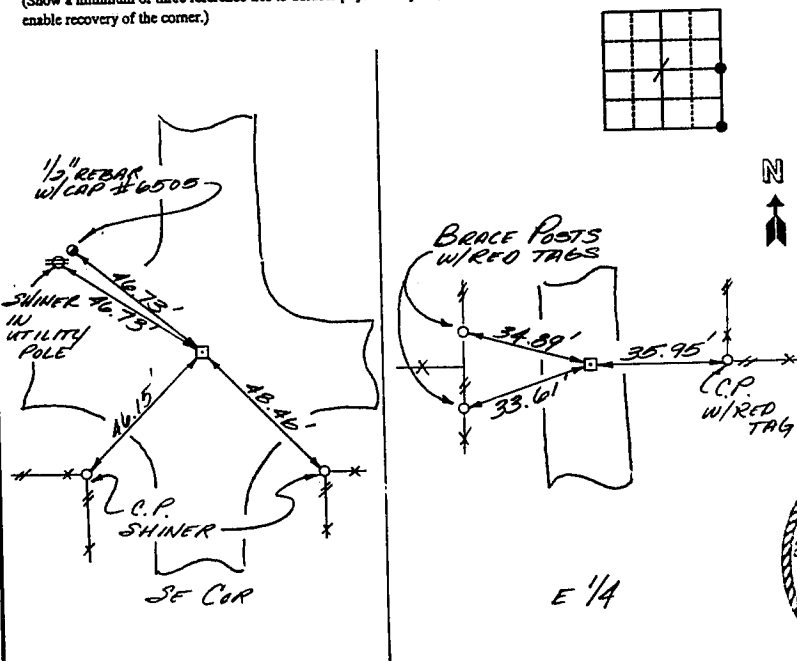
Land Survey Monuments situated in Section 1, Township 87, Range
14 of the Fifth Principal Meridian, BLACK HAWK County, Iowa.
Previously recorded in Book , Page .

(Show reason for preparing this certificate, the evidence and detailed procedures used in establishing the corner positions and monumentation found or placed.)

Monument Description and Remarks: SURVEY DONE IN E 1/2 SE 1/4
SEC. 1-87-14. E 1/4 COR - FOUND CONCRETE MON.
W/BRASS CAP 0.4' DEEP
SE COR - FOUND CONCRETE MON.
W/BRASS CAP 1.0' DEEP

PLAN - VIEW

(Show a minimum of three reference ties to durable physical objects, relevant monuments and physical conditions that will enable recovery of the corner.)



I hereby certify that this plat, map, survey or report was made by me or under my direct personal supervision and that I am a duly Registered Land Surveyor under the laws of the State of Iowa.
Paul H. Helland
PAUL H. HELLAND, P. E. & R. L. S. IOWA REGISTRATION NO. 6505
My registration expires December 31, 1996

List Corners to be Indexed

Corners	Section	Twp	Range
SE	1	87	14
E 1/4	1	87	14

HELLAND ENGINEERING & SURVEYING, LTD.
Thunder Ridge Bank Building
2322 West First St., Suite B
Cedar Falls, Iowa 50613
319-266-0161

BK 110 Pg 51

BOOK 319 PAGE 882