

18
P
Z

Document Number: 2007027125
Date: Jun 20, 2007 4:30:00 pm
Aud Fee: 0.00 Rec Fee: 0.00
Trans Tax: 0.00 Rec Management Fee: 0.00
E-Com Fee: 0.00 Non-Standard Page Fee: 0.00
Filed for record in Black Hawk County, Iowa
Judith A. McCarthy, County Recorder

PREPARED BY: BLACK HAWK COUNTY ENGINEERS OFFICE PH.# (319) 833-3008 SLSI 9-94
316 E. FIFTH STREET, ROOM 211 WATERLOO, IOWA 50703 FAX.# (319) 833-3139 CERT 12-96

UNITED STATES PUBLIC LAND SURVEY CORNER CERTIFICATE OF
Land Survey Monuments situated in Section 36, Township 87 N, Range 13 W, of the Fifth Principal Meridian, BLACK HAWK County, Iowa. Previously recorded in Misc. Book n/a, Page n/a, in County Recorder's Office.

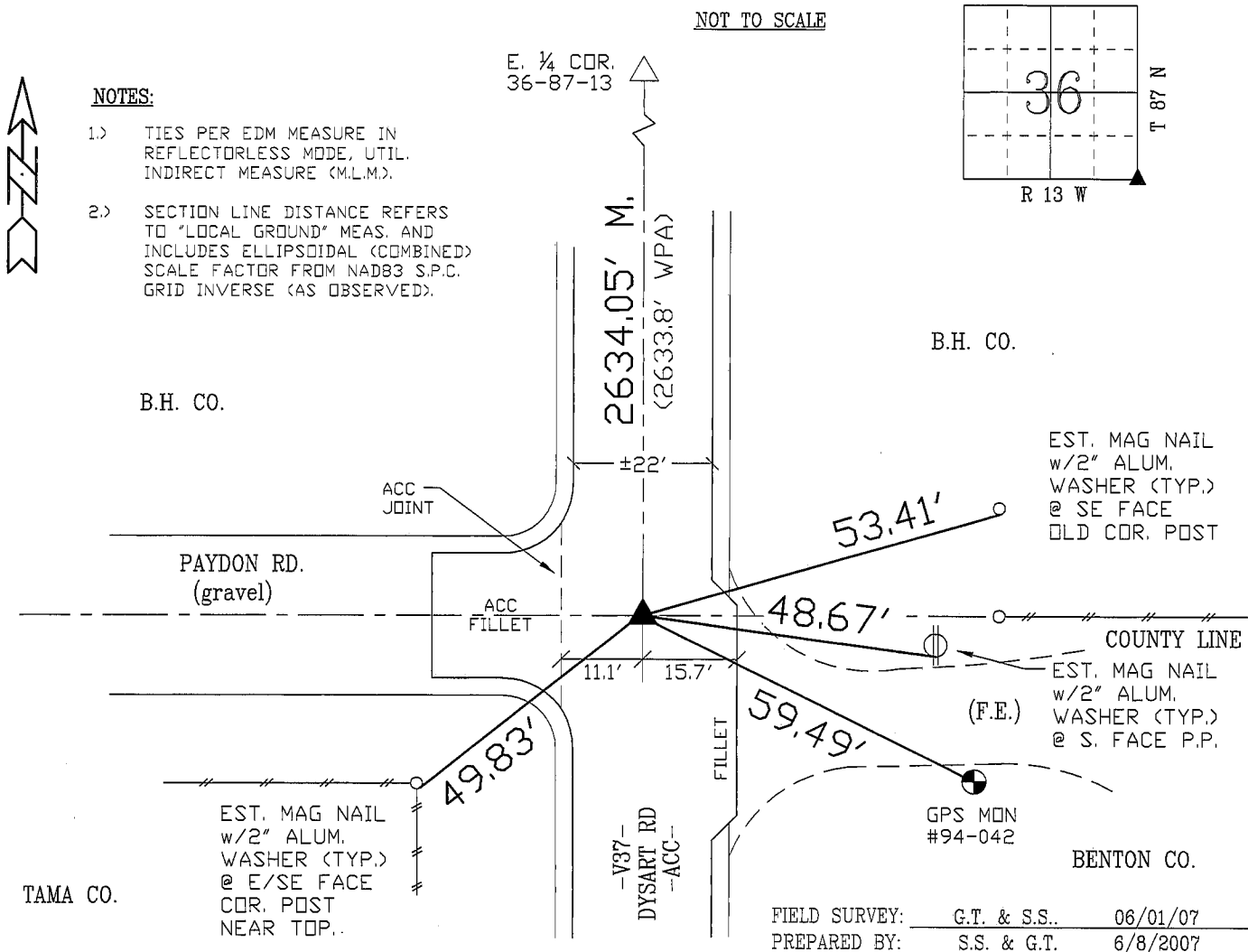
(Show reason for preparing this certificate, the evidence and detailed procedures used in establishing the corner positions and monumentation found or placed.)

Monument Description and Remarks: FND 1-1/2" MACHINED HEAD BOLT " @ ± C.L. INTERSECTION PRIOR TO RESURF. PROJECT. RE-SET #5 REBAR x 5" L. LOC. 0.95' WEST OF C.L. ACC JOINT AND ALIGNED w/ C.L. PAYDON RD. W., PER UPDATED CORNER TIES. CORNER TEMP. REFERENCED AND RESET AS DENOTED DUE TO PLAN 5 1/2" DEPTH H.M.A. RESURFACING PROJECT.

PLAN - VIEW

(Show a minimum of three reference ties to durable physical objects, relevant monuments and physical conditions that will enable recovery of the corner.)

NOT TO SCALE



CERTIFICATION

I hereby certify that this land surveying document was prepared and the related survey work was performed by me or under my direct personal supervision and that I am a duly licensed Land Surveyor under the laws of the State of Iowa.

Richard L. King
Richard L. King
License Number 3890
My license renewal date is December 31, 2007
Pages or sheets covered by this seal:
This Land Corner Certificate Only.

LIST CORNERS TO BE INDEXED

Corner	Section	Township	Range
S.E. COR.	36	87 N	13 W
S.W. COR.	31	87 N	12 W