

Document Number: 2009001133  
Date: Jul 15, 2008 4:30:00 pm  
Aud Fee: 0.00 Rec Fee: 0.00  
Trans Tax: 0.00 Rec Management Fee: 0.00  
E-Com Fee: 0.00 Non-Standard Page Fee: 0.00  
Filed for record in Black Hawk County, Iowa  
Judith A. McCarthy, County Recorder

PREPARED BY: BLACK HAWK COUNTY ENGINEERS OFFICE  
316 E. FIFTH STREET, ROOM 211 WATERLOO, IOWA 50703

PH.# (319) 291-2419  
FAX.# (319) 291-2461  
SLSI 9-94  
CERT 12-96

UNITED STATES PUBLIC LAND SURVEY CORNER CERTIFICATE OF  
Land Survey Monuments situated in Section 36, Township 87 N,  
Range 13 W, of the Fifth Principal Meridian, BLACK HAWK County, Iowa.  
Previously recorded in Fee Book 2006, Page 08368, in County Recorder's Office.

(Show reason for preparing this certificate, the evidence and detailed procedures used in establishing the corner positions and monumentation found or placed.)

Monument Description and Remarks: N 1/4 CORNER: BH. CO. ENG. REF. TIES  
DATED 5/20/1976 CALLS FOR "LEAD PLUG SET w/STUBBY NAIL IN CENTER".  
FOUND "STUBBY" NAIL IN CNTR. OF 5/8"Ø LEAD PLUG IN P.C.C PVM'T @ 0.13'  
NORTH OF C.L. PCC JOINT, PER CUR. PLS. #16264 CORNER RECORD.  
CORNER TEMP. REFERENCED AND RETIED AS DENOTED, PRIOR TO HMA/ACC  
PROJECT. RESET CORNER w/ ±7" L. #5 REBAR, FLUSH w/ HMA/ACC PVM'T.  
BEING ALIGNED ± w/ FENCE N.-S. @ 0.10' NORTH OF HMA C.L. JOINT.

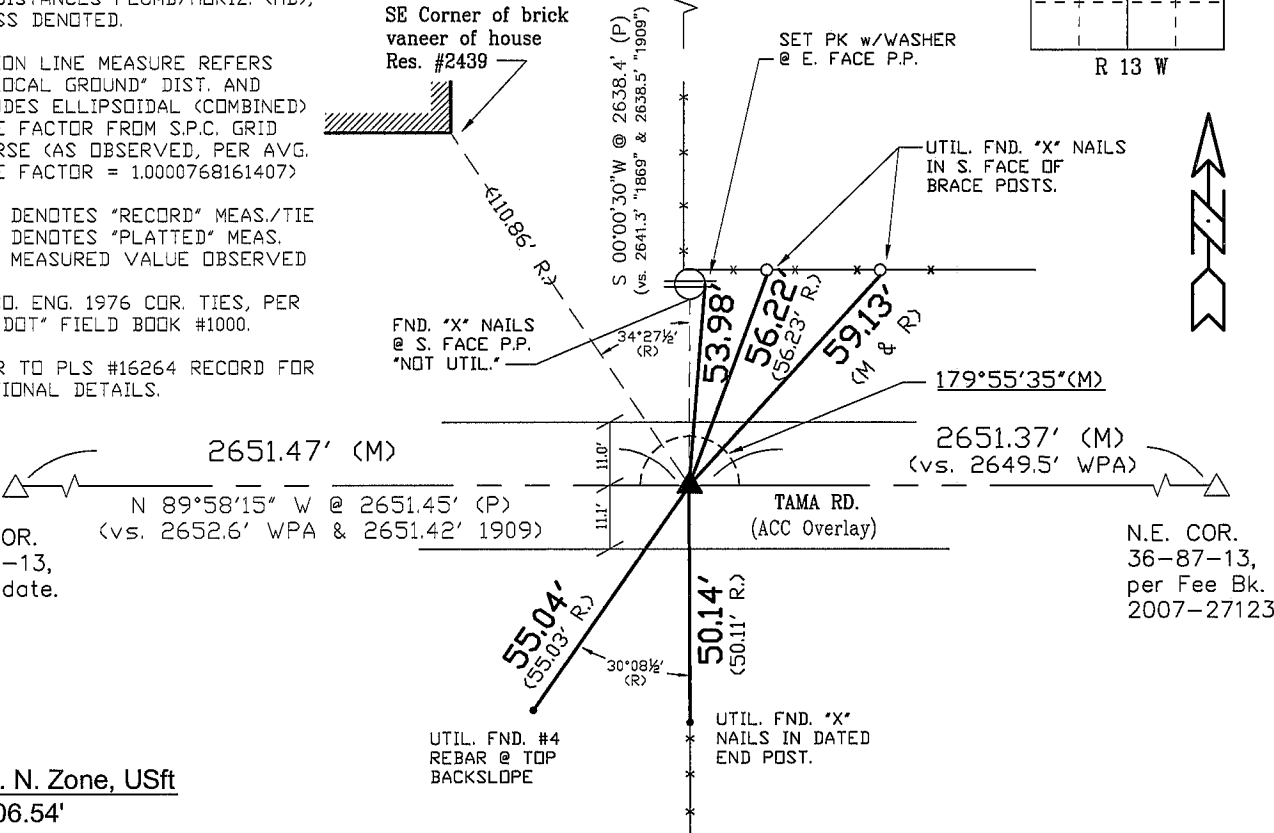
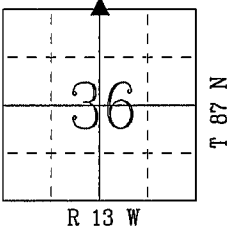
PLAN - VIEW

(Show a minimum of three reference ties to durable physical objects, relevant monuments and physical conditions that will enable recovery of the corner.)

NOTES:

- 1.) TIES PER EDM MEASURE IN EITHER PRISM "DR" NON-PRISM MODE, WHILE UTILIZING "INDIRECT" MEASURE, WITH ALL DISTANCES PLUMB/HORIZ. (HD), UNLESS DENOTED.
- 2.) SECTION LINE MEASURE REFERS TO "LOCAL GROUND" DIST. AND INCLUDES ELLIPSOIDAL (COMBINED) SCALE FACTOR FROM S.P.C. GRID INVERSE (AS OBSERVED, PER AVG. SCALE FACTOR = 1.0000768161407)
- 3.) "R" = DENOTES "RECORD" MEAS./TIE  
"P" = DENOTES "PLATTED" MEAS.  
"M" = MEASURED VALUE OBSERVED
- 4.) B.H. CO. ENG. 1976 COR. TIES, PER "RED DOT" FIELD BOOK #1000.
- 5.) REFER TO PLS #16264 RECORD FOR ADDITIONAL DETAILS.

Center Sect. 25-T87N-R13W  
0.3'(N-W)x0.3'(E-W)x0.9'L. Black Granite  
w/distinct point, & No.4 rebar  
w/DPC #16264 0.08' North of point  
for magnetic detection.  
(Per Fee Bk. 2006-08369)



S.P.C., Ia. N. Zone, USft  
N=3579006.54'  
E=5243507.25'  
(NAD83-2007 "BHco07", RTK Obs.)

FIELD SURVEY: G.T. & J.Z 06/11/08  
PREPARED BY: G.T. & J.Z 7/15/08

CERTIFICATION



I hereby certify that this land surveying document was prepared and the related survey work was performed by me or under my direct personal supervision and that I am a duly licensed Land Surveyor under the laws of the State of Iowa.  
*Geoffrey Allen Tinker* 7/15/2008  
Geoffrey Allen Tinker (date)  
License Number 15748  
My license renewal date is December 31, 2008  
Pages or sheets covered by this seal:  
This Land Corner Certificate Only.

LIST CORNERS TO BE INDEXED

Corner	Section	Township	Range
N. 1/4	36	87 N	13 W
S. 1/4	25	87 N	13 W