

Misc/SC
INDEX
MARGIN
PROOF
COMPARE

BLACK HAWK COUNTY IOWA:SS
Filed for record Nov 16, 1998 at
4:00 P.M. and recorded in Book 332
of Misc Page 304

11604

Cynthia S. Liss
Recorder
Fee N/C
BLACK HAWK COUNTY ENGINEER

PREPARED BY: BLACK HAWK COUNTY ENGINEERS OFFICE
316 E. FIFTH STREET, ROOM 211 WATERLOO, IOWA 50703

PH.# (319) 291-2419
FAX# (319) 291-2461
SLST 9-94
CERT 12-98

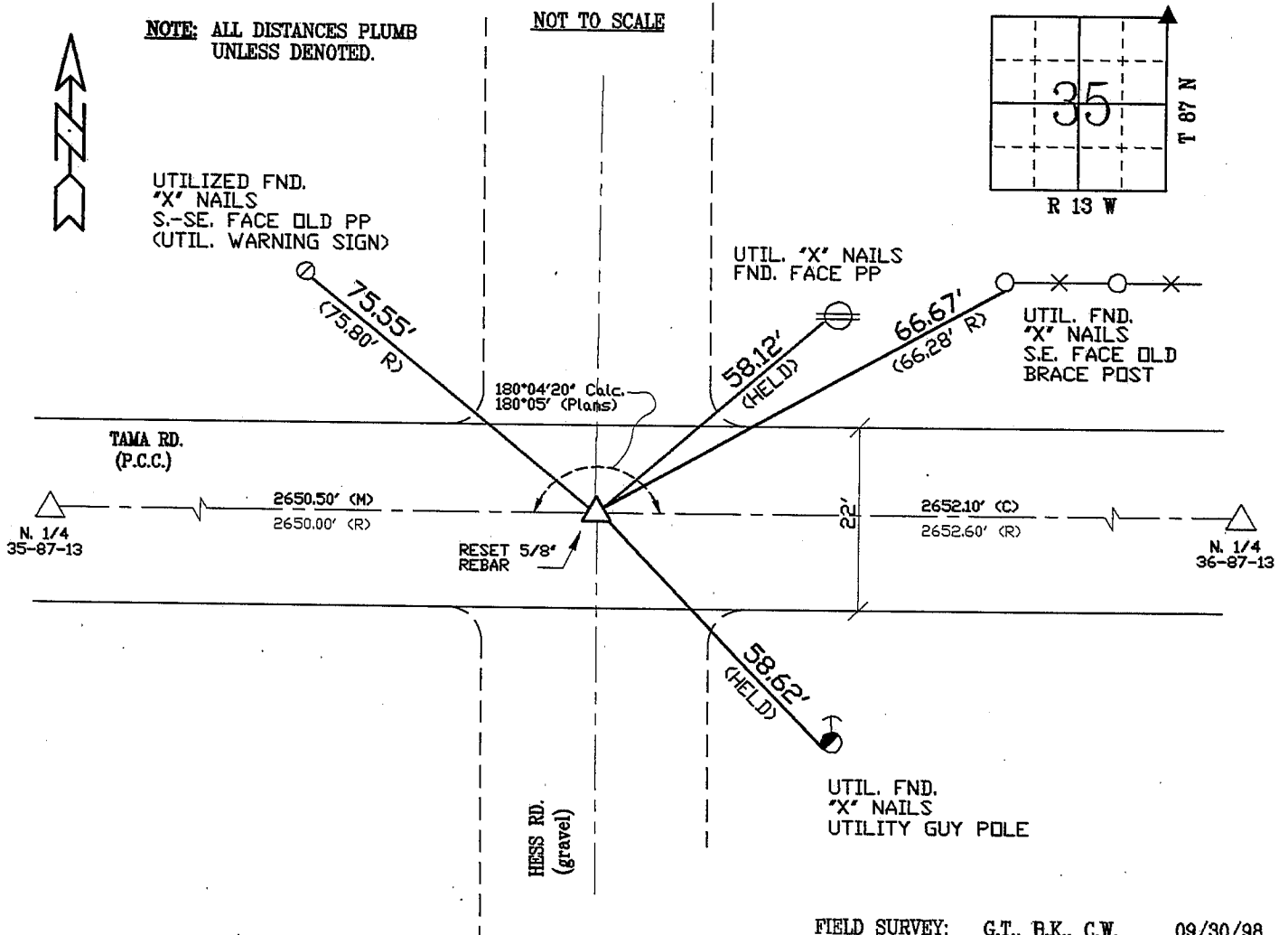
UNITED STATES PUBLIC LAND SURVEY CORNER CERTIFICATE OF
Land Survey Monuments situated in Section 35, Township 87 N,
Range 13 W, of the Fifth Principal Meridian, BLACK HAWK County, Iowa.
Previously recorded in Misc. Book N/A, Page N/A, in County Recorder's Office.

(Show reason for preparing this certificate, the evidence and detailed procedures used in establishing the corner positions and monumentation found or placed.)

Monument Description and Remarks: CORNER HAD BEEN OBLITERATED BY
COUNTY FOR PCC REMOVAL/REPL. @ INTERSECTION. TIES FOUND OF
RECORD DERIVED 4 POSSIBLE SOLUTIONS. IT WAS DECIDED TO UTIL.
N1/4'S E. & W. TO UTIL. RECORD CHAIN DIST. AND PLAN DEFL. ANGLE.
TIES TO UTIL. POLES N.E. AND S.E. 'HELD' AS BEST SOLUTION WITH
DIST. AND ANGLE SHOWN. RE-EST 5/8 REBAR LOC. 0.15' N. CL. JOINT.

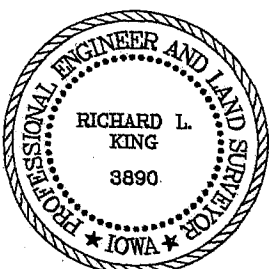
PLAN - VIEW

(Show a minimum of three reference ties to durable physical objects, relevant monuments and physical conditions that will enable recovery of the corner.)



FIELD SURVEY: G.T., B.K., C.W. 09/30/98
PREPARED BY: G.T. 10/27/98

CERTIFICATION



I hereby certify that this land surveying document was prepared and the related survey work was performed by me or under my direct personal supervision and that I am a duly licensed Land Surveyor under the laws of the State of Iowa.

Richard L. King 11/6/98
Richard L. King (date)

License Number 3890

My license renewal date is December 31, 1999

Pages or sheets covered by this seal:

This Land Corner Certificate Only.

LIST CORNERS TO BE INDEXED

Corner	Section	Township	Range
N.E. COR.	35	87 N	13 W