

I
P
Z

Document Number: 2009001131
Date: Jul 15, 2008 4:30:00 pm
Aud Fee: 0.00 Rec Fee: 0.00
Trans Tax: 0.00 Rec Management Fee: 0.00
E-Com Fee: 0.00 Non-Standard Page Fee: 0.00
Filed for record in Black Hawk County, Iowa
Judith A. McCarthy, County Recorder

PREPARED BY: BLACK HAWK COUNTY ENGINEERS OFFICE
316 E. FIFTH STREET, ROOM 211 WATERLOO, IOWA 50703
PH.# (319) 833-3008 SLSI 9-94
FAX.# (319) 833-3139 CERT 12-96

UNITED STATES PUBLIC LAND SURVEY CORNER CERTIFICATE OF
Land Survey Monuments situated in Section 35, Township 87 N,
Range 13 W, of the Fifth Principal Meridian, BLACK HAWK County, Iowa.
Previously recorded in Misc. Book N/A, Page N/A, in County Recorder's Office.

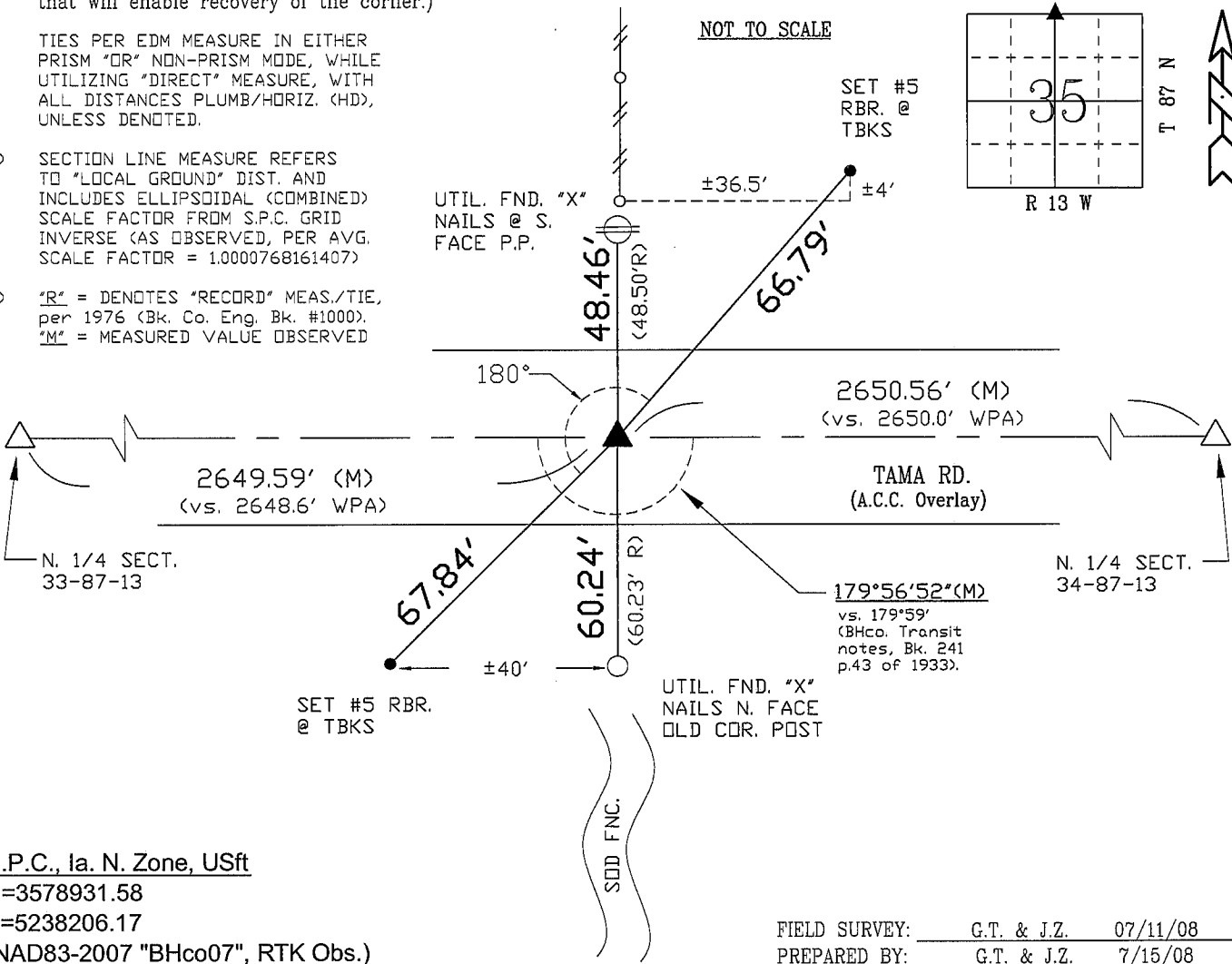
(Show reason for preparing this certificate, the evidence and detailed procedures used in establishing the corner positions and monumentation found or placed.)

Monument Description and Remarks: N. 1/4 CORNER: BH. CO. ENG. TIES OF
5-20-1976 CALL FOR "SET LEAD PLUG IN P.C.C. PVM'T. w/ STUBBY IN CNTR.",
WHILE OCT. 1974 BH. CO. ENG. TIES CALL FOR "SET IRON PIN".
FND. 3/8" STEEL PIN IN PCC @ 0.12' N. OF $\frac{1}{4}$ PCC JNT. & ALIGNED w/ FNC.
TO NORTH AND ALIGNED $\pm 1.25'$ WEST OF OLD SOD FNC. TO SOUTH.
TEMP. REFERENCED AND RETIED AS DENOTED. RE-SET $\pm 7"$ L. 5/8" REBAR @
0.35' NORTH OF C.L. ACC JOINT.

PLAN - VIEW

(Show a minimum of three reference ties to durable physical objects, relevant monuments and physical conditions that will enable recovery of the corner.)

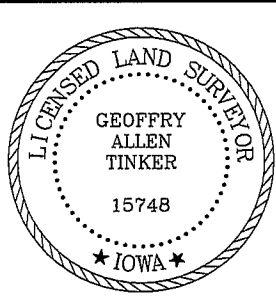
- 1.) TIES PER EDM MEASURE IN EITHER PRISM "OR" NON-PRISM MODE, WHILE UTILIZING "DIRECT" MEASURE, WITH ALL DISTANCES PLUMB/HORIZ. (HD), UNLESS DENOTED.
- 2.) SECTION LINE MEASURE REFERS TO "LOCAL GROUND" DIST. AND INCLUDES ELLIPSOIDAL (COMBINED) SCALE FACTOR FROM S.P.C. GRID INVERSE (AS OBSERVED, PER AVG. SCALE FACTOR = 1.0000768161407)
- 3.) "R" = DENOTES "RECORD" MEAS./TIE, per 1976 (Bk. Co. Eng. Bk. #1000).
"M" = MEASURED VALUE OBSERVED



S.P.C., Ia. N. Zone, USft
N=3578931.58
E=5238206.17
(NAD83-2007 "BHco07", RTK Obs.)

FIELD SURVEY: G.T. & J.Z. 07/11/08
PREPARED BY: G.T. & J.Z. 7/15/08

CERTIFICATION



I hereby certify that this land surveying document was prepared and the related survey work was performed by me or under my direct personal supervision and that I am a duly licensed Land Surveyor under the laws of the State of Iowa.
Geoffrey Allen Tinker 7/15/2008
Geoffrey Allen Tinker (date)
License Number 15748
My license renewal date is December 31, 2008
Pages or sheets covered by this seal:
This Land Corner Certificate Only.

LIST CORNERS TO BE INDEXED

Corner	Section	Township	Range
N. 1/4	35	87 N	13 W
S. 1/4	26	87 N	13 W