

PROOF

FILED FOR RECORD

DEC 2

2005

AT

11:00 A

M.

FEE 1-5.00/-1.00/

COMPARED

BLACK HAWK COUNTY RECORDER

HELLAND ENGINEERING & SURVEYING

Jeffrey P. Helland, 1107 Technology Parkway, Cedar Falls, Iowa 50613-6951, (319)-266-0161

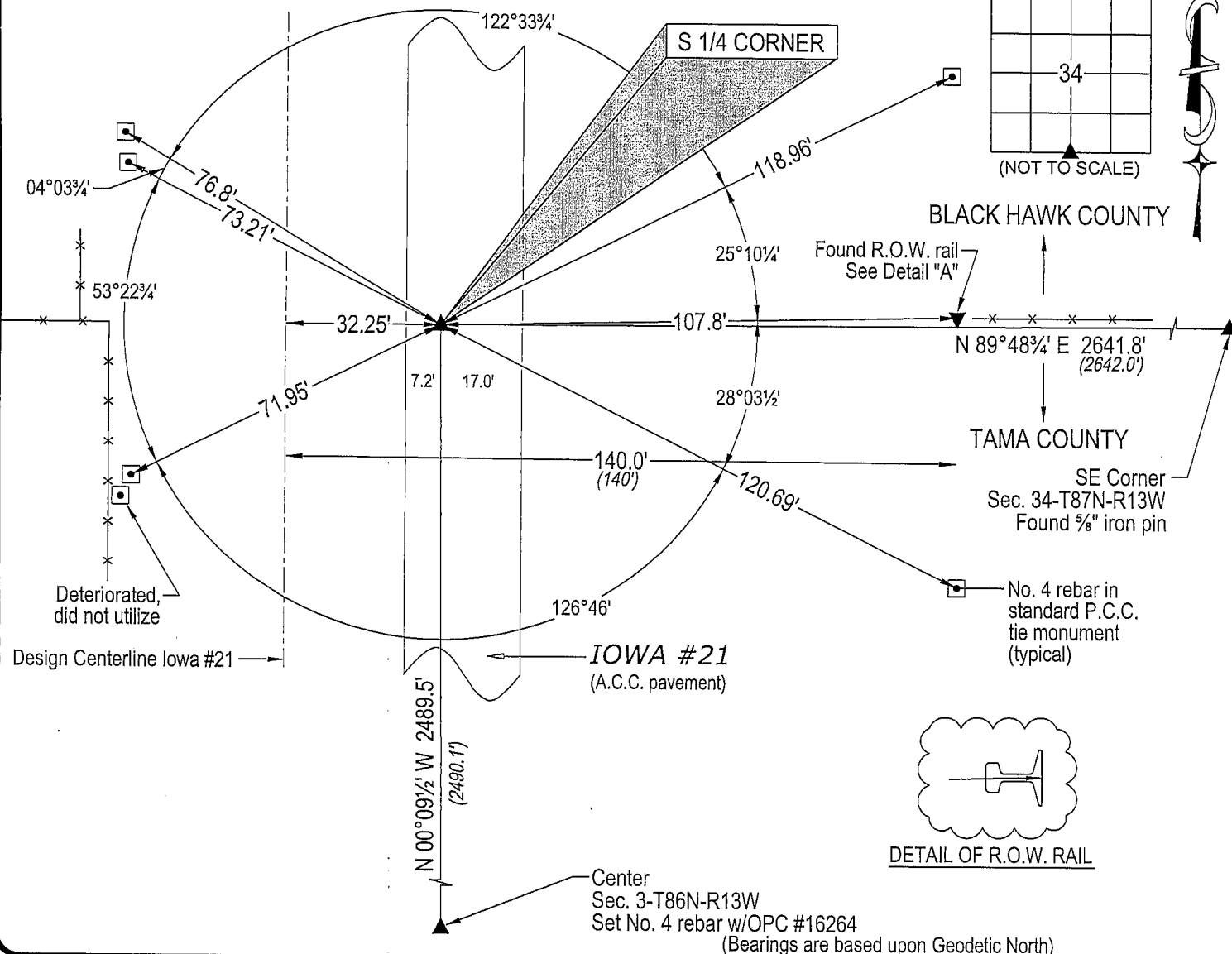
UNITED STATES PUBLIC LAND SURVEY CORNER CERTIFICATE
OFLAND SURVEY MONUMENTS SITUATED IN SECTION NO. 34, TOWNSHIP NO. 87 NORTH, RANGE
NO. 13 WEST OF THE FIFTH PRINCIPAL MERIDIAN, BLACK HAWK COUNTY, IOWA.
PREVIOUSLY RECORDED IN _____(SHOW REASON FOR PREPARING THIS CERTIFICATE, THE EVIDENCE AND DETAILED PROCEDURES USED IN ESTABLISHING THE
CORNER POSITIONS AND MONUMENTATION FOUND OR PLACED.)

MONUMENT DESCRIPTION AND REMARKS:

No USPLSCC on file. Survey completed in the NEFRL 1/4 of Sec. 3-T86N-T13W.

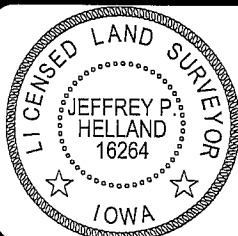
→ S 1/4 CORNER: All Black Hawk County Engineer reference ties obliterated. No Tama County Engineer reference ties
available. Found "stubby" nail in A.C.C. pavement corresponding to R.O.W. information and Tama County Engineer
distance from the NE Corner of Sec. 3-T86N-R13W.

PLAN VIEW

(SHOW A MINIMUM OF THREE REFERENCE TIES TO DURABLE PHYSICAL OBJECTS, RELEVANT MONUMENTS AND PHYSICAL
CONDITIONS THAT WILL ENABLE RECOVERY OF THE CORNER.)HELLAND ENGINEERING & SURVEYING, LTD.
1107 Technology Parkway
Cedar Falls, Iowa 50613-6951
(319)-266-0161shiner = 8d nail & 1 15/16"Ø metal shiner
OPC = Plastic cap (O=orange, R=red, Y=yellow)

(00') Recorded As

File Name: 05-295c5.dwg

I hereby certify that this land surveying document was prepared
and the related survey work was performed by me or under my
direct personal supervision and that I am a duly licensed Land
Surveyor under the laws of the State of Iowa.Jeffrey P. Helland 10/10/05
Jeffrey P. Helland
License Number 16264
My license renewal date is December 31, 2005.
All pages or sheets are covered by this seal except:LIST CORNERS TO BE INDEXED
CORNER SECTION TOWNSHIP RANGE
S 1/4 CORNER 34 87N 13W