

SC ✓  
Misc ✓  
INDEX ✓  
MARGIN ✓  
PROOF ✓  
COMPARE ✓

BLACK HAWK COUNTY IOWA:SS  
Filed for record Nov 16, 1998 at 11601  
4:00 P.M. and recorded in Book 332  
of Misc Page 301  
Recorder  
Fee N/C  
BLACK HAWK COUNTY ENGINEER

PREPARED BY: BLACK HAWK COUNTY ENGINEERS OFFICE  
316 E. FIFTH STREET, ROOM 211 WATERLOO, IOWA 50703  
PH.# (319) 291-2419  
FAX.# (319) 291-2461  
SLSI 9-94  
CERT 12-98

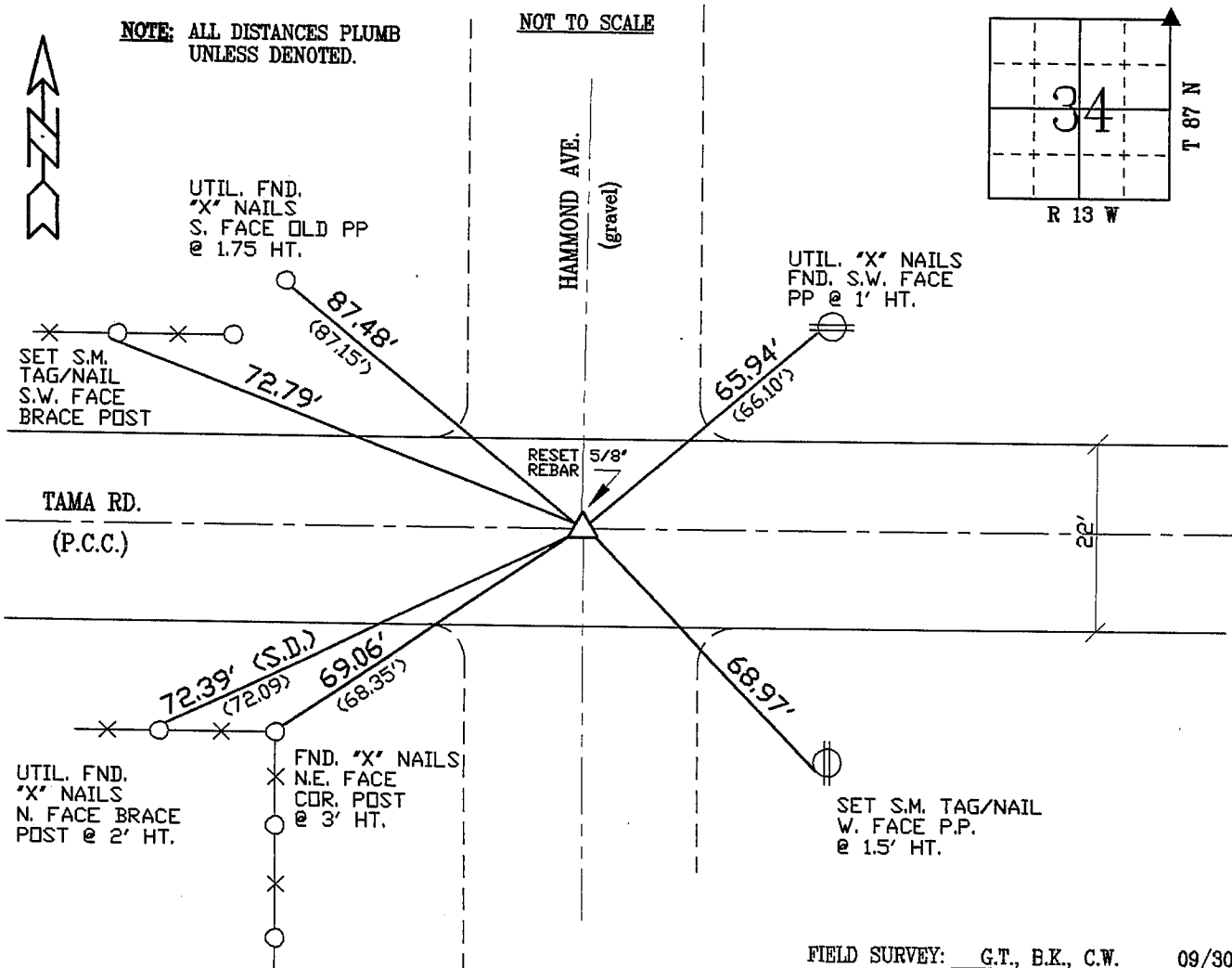
UNITED STATES PUBLIC LAND SURVEY CORNER CERTIFICATE OF  
Land Survey Monuments situated in Section 34, Township 87 N,  
Range 13 W, of the Fifth Principal Meridian, BLACK HAWK County, Iowa.  
Previously recorded in Misc. Book N/A, Page N/A, in County Recorder's Office.

(Show reason for preparing this certificate, the evidence and detailed procedures used in establishing the corner positions and monumentation found or placed.)

Monument Description and Remarks: FOUND ORIG. CONCRETE MONUMENT  
LOC. 18" DEEP DURING PCC PATCH REMOVAL. TEMP. REF. AND EST. 5/8"  
x 18" L. REBAR w/ L.S. YELLOW CAP #3890 IN PCC PAVEMENT AS SHOWN.  
EXIST. CO. TIES OF RECORD SHOWN IN LIGHT TEXT FOR POS. REF./ERROR.

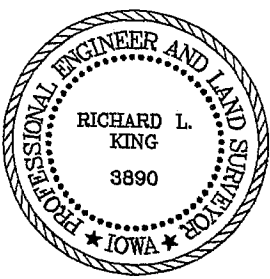
PLAN - VIEW

(Show a minimum of three reference ties to durable physical objects, relevant monuments and physical conditions that will enable recovery of the corner.)



FIELD SURVEY: G.T., B.K., C.W. 09/30/98  
PREPARED BY: G.T. 10/27/98

CERTIFICATION



I hereby certify that this land surveying document was prepared and the related survey work was performed by me or under my direct personal supervision and that I am a duly licensed Land Surveyor under the laws of the State of Iowa.

Richard L. King 11/16/98 (date)

License Number 3890

My license renewal date is December 31, 1999

Pages or sheets covered by this seal:  
This Land Corner Certificate Only.

LIST CORNERS TO BE INDEXED

Corner	Section	Township	Range
N.E. COR.	34	87 N	13 W