

BLACK HAWK COUNTY ENGINEER

PREPARED BY: BLACK HAWK COUNTY ENGINEERS OFFICE
316 E. FIFTH STREET, ROOM 211 WATERLOO, IOWA 50703

PH.# (319) 833-3008
FAX.# (319) 833-3139

SLSI 9-94
CERT 12-96

UNITED STATES PUBLIC LAND SURVEY CORNER CERTIFICATE OF
Land Survey Monuments situated in Section 34, Township 87 N,
Range 13 W, of the Fifth Principal Meridian, BLACK HAWK County, Iowa.
Previously recorded in Misc. Book N/A, Page N/A, in County Recorder's Office.

(Show reason for preparing this certificate, the evidence and detailed procedures used in establishing the corner positions and monumentation found or placed.)

Monument Description and Remarks: FOUND AND UTILIZED P.C.C. NAIL
LOCATED 0.32' S. OF C.L. P.C.C. JOINT OF TAMA RD., JUST W. OF HWY. #21.
UTIL. CORNER IN ASSOC. WITH CORNER RE-EST. ON N.E. COR. SECT. 32-87-13
RECORD TIES TO ADDITIONAL IDOT C.M.'S (NOT RECOVERED) PER B.H. CO.
FIELD BOOK # 418 P. 10, IN ADDITION TO CONSTRUCTION TIES OF 1978.
N. LINE OF N.W. 1/4 MEASURE PER RTK GPS, LOCAL HORIZ. GROUND PLANE.

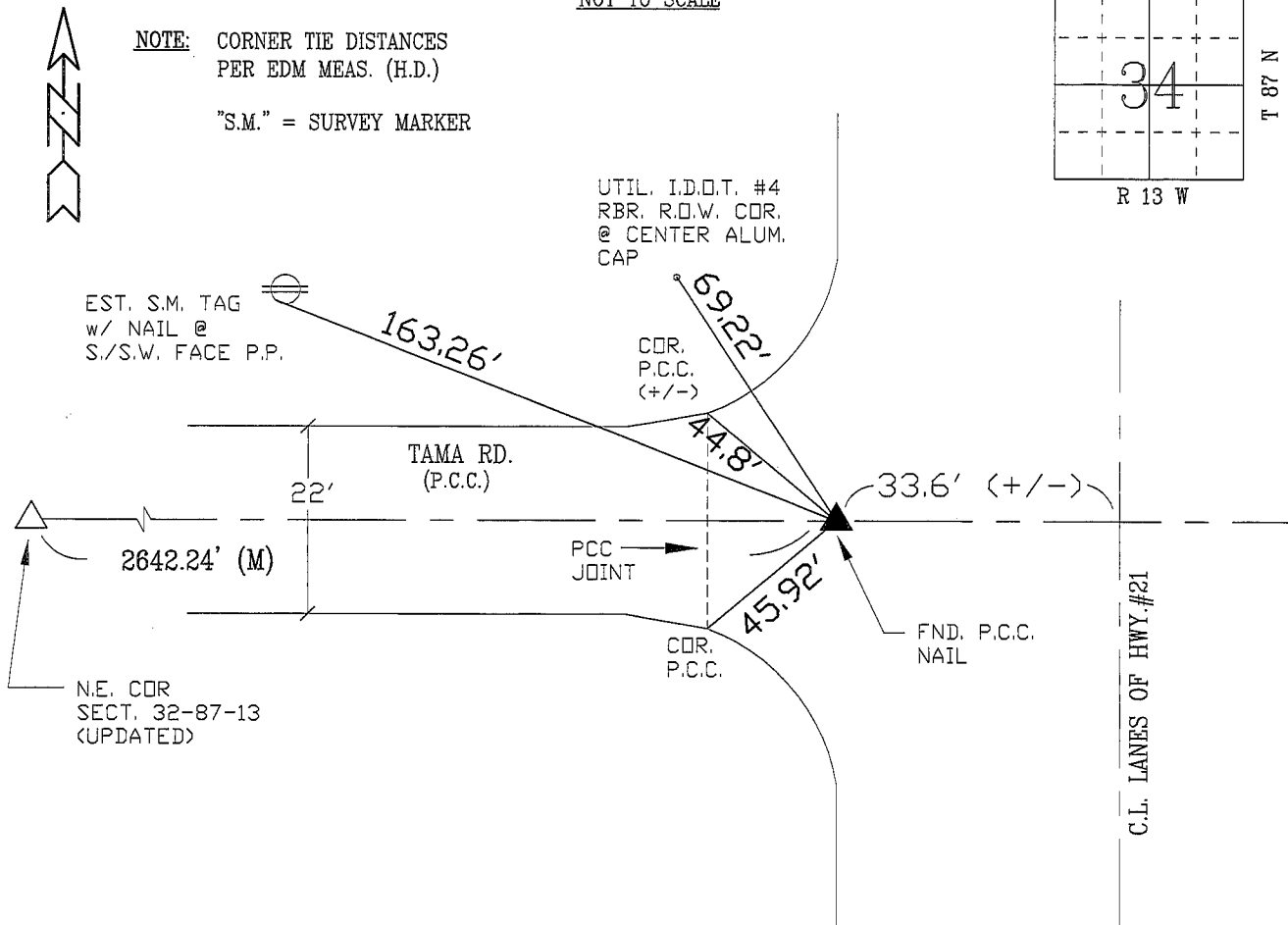
PLAN - VIEW

(Show a minimum of three reference ties to durable physical objects, relevant monuments and physical conditions that will enable recovery of the corner.)

NOT TO SCALE

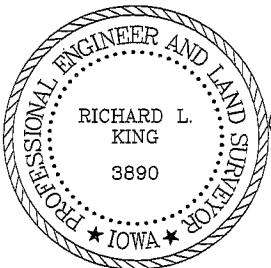
NOTE: CORNER TIE DISTANCES
PER EDM MEAS. (H.D.)

"S.M." = SURVEY MARKER



FIELD SURVEY: G.T. & C.W. 04/21/05
PREPARED BY: G.T. & C.W. 05/31/05

CERTIFICATION



I hereby certify that this land surveying document was prepared and the related survey work was performed by me or under my direct personal supervision and that I am a duly licensed Land Surveyor under the laws of the State of Iowa.
Richard L. King (date)
License Number 3890
My license renewal date is December 31, 2005
Pages or sheets covered by this seal:
This Land Corner Certificate Only.

LIST CORNERS TO BE INDEXED

Corner	Section	Township	Range
N. 1/4	34	87 N	13 W
S. 1/4	27	87 N	13 W