

N.E. Cor. 33-T87-R13 READ-ME !!  
Per 2007 NSSDA (Mapping QA/QC) test point project, corner was X'ed and observed for test point.  
During occupation, record S.M. Spike was NOT recovered. Pulled record ties, and re-est said Section Corner as "CUT X", located within PCC joint as detailed.  
Corner not re-filed, due to future planned ACC resurf. project in Cal. year 2008.  
Attached to corner record, for file reference.  
G.Tinker (Ia. PLS #15748), dtd. 05/11/2007

FEE BOOK # 20 05 28526  
2005, AT 1:00 P.M. FEE N/C  
BLACK HAWK COUNTY RECORDER  
PH.# (319) 833-3008  
FAX.# (319) 833-3139  
SLSI 9-94  
CERT 12-98

PREPARED BY: 316 E. FIFTH STREET, ROOM 211 WATERLOO, IOWA 50703

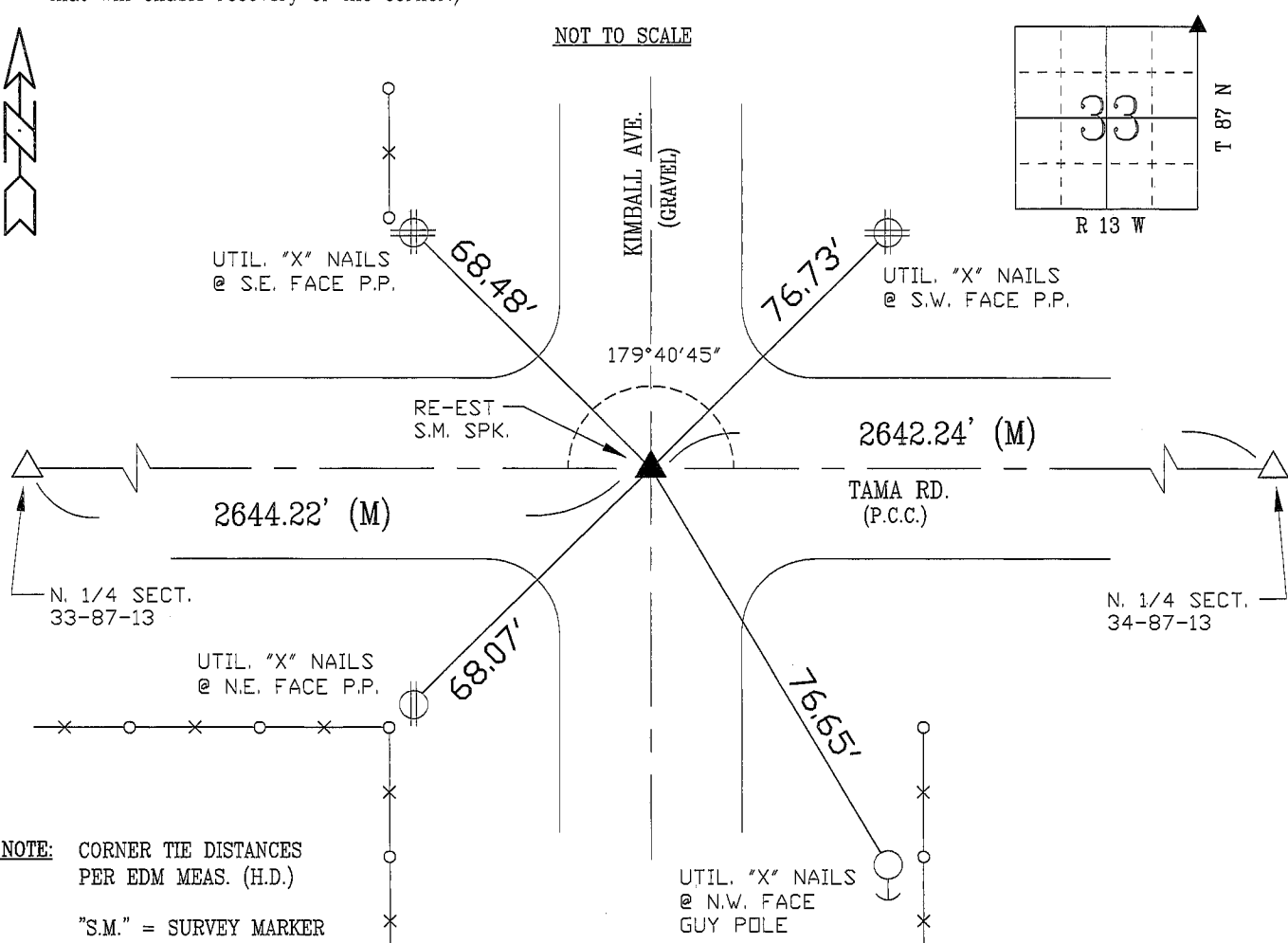
UNITED STATES PUBLIC LAND SURVEY CORNER CERTIFICATE OF  
Land Survey Monuments situated in Section 33, Township 87 N, Range 13 W, of the Fifth Principal Meridian, BLACK HAWK County, Iowa. Previously recorded in Misc. Book N/A, Page N/A, in County Recorder's Office.

(Show reason for preparing this certificate, the evidence and detailed procedures used in establishing the corner positions and monumentation found or placed.)

Monument Description and Remarks: RE-EST. S.M. SPIKE IN C.L. P.C.C. JOINT OF P.C.C. PANEL REPLACEMENT @ INTERSECTION OF KIMBALL AVE.  
PREVIOUS CORNER DESTROYED PER PAVEMENT/PANEL REMOVAL.  
RE-EST. CORNER IN ASSOC. WITH TAMA ROAD SUBDRAIN AS-BUILT PROJECT.  
RECORD DEFL. PER 1977 PCC PAVING PLANS = 0°18' LT. VS. MEAS. DENOTED.  
DEFL. & LAND CORNER DISTANCES PER RTK GPS, LOCAL HORIZ. PLANE.

PLAN - VIEW

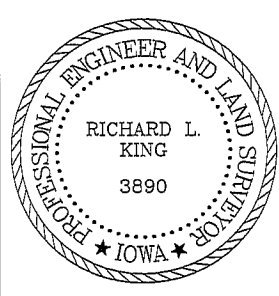
(Show a minimum of three reference ties to durable physical objects, relevant monuments and physical conditions that will enable recovery of the corner.)



NOTE: CORNER TIE DISTANCES PER EDM MEAS. (H.D.)  
"S.M." = SURVEY MARKER

FIELD SURVEY: G.T. & C.W. 04/21/05  
PREPARED BY: G.T. & C.W. 05/31/05

CERTIFICATION



I hereby certify that this land surveying document was prepared and the related survey work was performed by me or under my direct personal supervision and that I am a duly licensed Land Surveyor under the laws of the State of Iowa.  
Richard L. King (date)  
License Number 3890  
My license renewal date is December 31, 2005  
Pages or sheets covered by this seal:  
This Land Corner Certificate Only.

LIST CORNERS TO BE INDEXED

Corner	Section	Township	Range
N.E.	33	87 N	13 W
N.W.	34	87 N	13 W
S.E.	28	87 N	13 W
S.W.	27	87 N	13 W