

WJS

INDEX BLACK HAWK COUNTY, IOWA:ss

FEE BOOK # 20 05 28527

PROOF FILED FOR RECORD JUN 7, 2005, AT 1:00 P.M. FEE N/C

COMPARED Patricia J. Less BLACK HAWK COUNTY RECORDER

BLACK HAWK COUNTY ENGINEER

PREPARED BY: BLACK HAWK COUNTY ENGINEERS OFFICE
316 E. FIFTH STREET, ROOM 211 WATERLOO, IOWA 50703

PH.# (319) 833-3008
FAX.# (319) 833-3139

SLSI 9-94
CERT 12-96

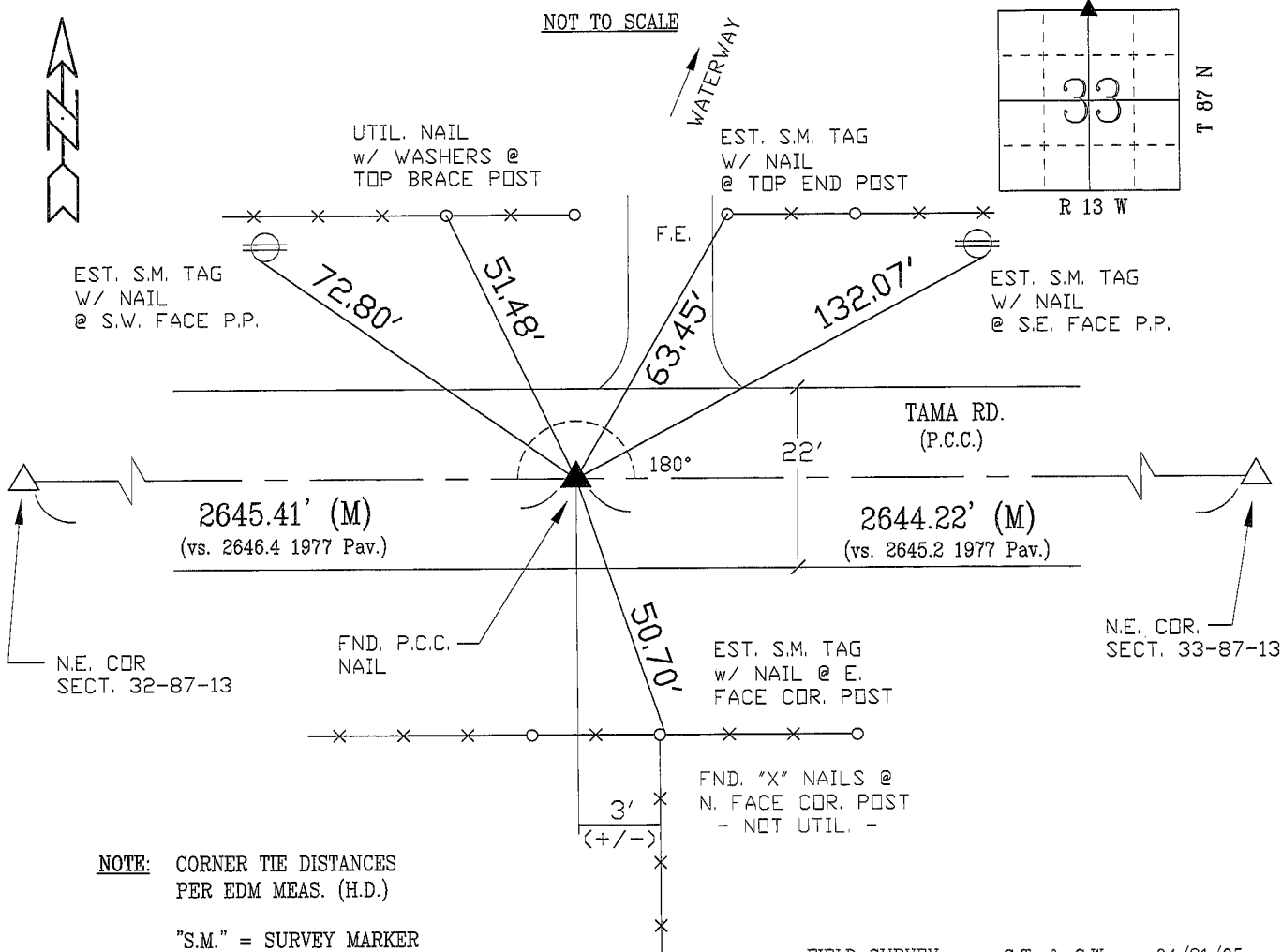
UNITED STATES PUBLIC LAND SURVEY CORNER CERTIFICATE OF
Land Survey Monuments situated in Section 33, Township 87 N,
Range 13 W, of the Fifth Principal Meridian, BLACK HAWK County, Iowa.
Previously recorded in Misc. Book N/A, Page N/A, in County Recorder's Office.

(Show reason for preparing this certificate, the evidence and detailed procedures used in establishing the corner positions and monumentation found or placed.)

Monument Description and Remarks: FOUND AND UTILIZED P.C.C. NAIL
LOCATED 0.12' N. OF C.L. P.C.C. JOINT OF TAMA RD., PER 1978 CONSTRUCTION
TIES. UTIL. CORNER IN ASSOC. WITH TAMA ROAD SUBDRAIN AS-BUILTS, AND
UTILIZED FOR REFERENCE TO RE-EST. N.E. CORNER SAID SECTION 33.
RECORD DEFL. PER 1977 PCC PAVING PLANS = 0°01' RT. VS. MEAS. DENOTED.
DEFL. & LAND CORNER DISTANCES PER RTK GPS, LOCAL HORIZ. PLANE.

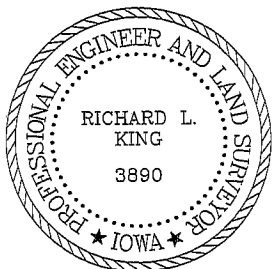
PLAN - VIEW

(Show a minimum of three reference ties to durable physical objects, relevant monuments and physical conditions that will enable recovery of the corner.)



FIELD SURVEY: G.T. & C.W. 04/21/05
PREPARED BY: G.T. & C.W. 05/31/05

CERTIFICATION



I hereby certify that this land surveying document was prepared and the related survey work was performed by me or under my direct personal supervision and that I am a duly licensed Land Surveyor under the laws of the State of Iowa.

Richard L. King (Signature)
Richard L. King (Name)
License Number 3890

My license renewal date is December 31, 2005

Pages or sheets covered by this seal:
This Land Corner Certificate Only.

LIST CORNERS TO BE INDEXED

Corner	Section	Township	Range
N. 1/4	33	87 N	13 W
S. 1/4	28	87 N	13 W