

PROOF

FILED FOR RECORD DEC 19

2002

AT 4:00 P.M.

FEE 1-5.00X

COMPARED

*Paul H. Helland*

BLACK HAWK COUNTY RECORDER

HELLAND ENGINEERING 1107 TECHNOLOGY PKWY CEDAR FALLS IA 50613-6951

Paul H. Helland, 1107 Technology Parkway, Cedar Falls, Iowa 50613-6951, (319)-266-0161

UNITED STATES PUBLIC LAND SURVEY CORNER CERTIFICATE  
OFLAND SURVEY MONUMENTS SITUATED IN SECTION NO. 31, TOWNSHIP NO. 87 NORTH, RANGE  
NO. 13 WEST OF THE FIFTH PRINCIPAL MERIDIAN, BLACK HAWK COUNTY, IOWA.

PREVIOUSLY RECORDED IN BOOK \_\_\_\_\_, PAGE \_\_\_\_\_.

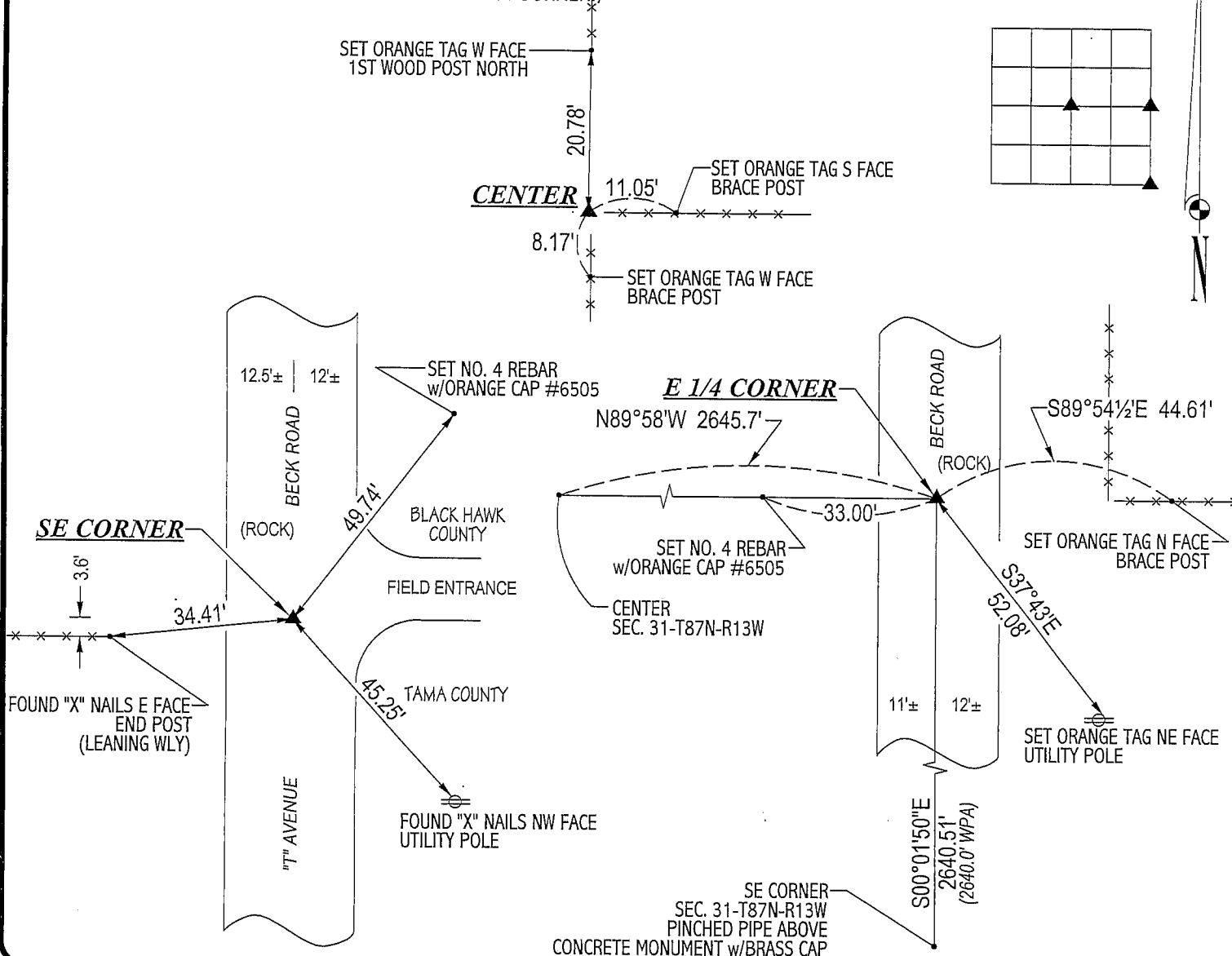
(SHOW REASON FOR PREPARING THIS CERTIFICATE, THE EVIDENCE AND DETAILED PROCEDURES USED IN ESTABLISHING THE  
CORNER POSITIONS AND MONUMENTATION FOUND OR PLACED.)

## MONUMENT DESCRIPTION AND REMARKS:

NO CORNER CERTIFICATE ON FILE. SURVEY DONE IN E 1/2 OF SE 1/4 OF SEC. 31-T87N-R13W.

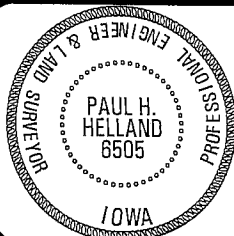
- E 1/4 CORNER: FOUND CONCRETE MONUMENT w/BRASS CAP 0.7' DEEP. FOUND NO. 5 REBAR NEAR NW CORNER OF CONCRETE MONUMENT USED FOR MAGNETIC DETECTION. CORNER IS 0.22' SOUTH & 0.07' EAST OF NAIL FOUND PER PLAT OF SURVEY 290 MISC. 514.
- SE CORNER: COUNTY ENGINEER REFERENCE TIES CALL FOR A "1/2" CLIP PIN" ABOVE A CONCRETE MONUMENT (1.5' DEEP). FOUND 1" o.d. PINCHED PIPE (1' LONG & 0.3' DEEP) ABOVE A CONCRETE MONUMENT w/BRASS CAP 1.4' DEEP. REPLACED PIPE ABOVE MONUMENT. CORNER IS 2.76' NORTH & 1.48' EAST OF "P-K" NAIL FOUND PER PLAT OF SURVEY 290 MISC. 514 IN LINE w/FENCE RUNNING WEST.
- CENTER: AUDITOR'S SURVEY BK 1 PG 108 HAS A DISTANCE OF 2646.0' BETWEEN CENTER & E 1/4 CORNER. EXCAVATED 2.5' DEEP IN VICINITY OF FENCE INTERSECTION. FOUND REMNANTS OF VERY OLD WOOD POST, SET NO. 4 REBAR w/ORANGE CAP #6505 @ BASE OF SAID WOOD POST WHICH MATCHES FENCE INTERSECTION.

## PLAN VIEW

(SHOW A MINIMUM OF THREE REFERENCE TIES TO DURABLE PHYSICAL OBJECTS, RELEVANT MONUMENTS AND PHYSICAL  
CONDITIONS THAT WILL ENABLE RECOVERY OF THE CORNER)HELLAND ENGINEERING & SURVEYING, LTD.  
1107 Technology Parkway  
Cedar Falls, Iowa 50613-6951  
(319)-266-0161

(00.00') - RECORDED AS

FILE NAME: 02-322C1.DRG

I hereby certify that this land surveying document was prepared  
and the related survey work was performed by me or under my  
direct personal supervision and that I am a duly licensed Land  
Surveyor under the laws of the State of Iowa.

Paul H. Helland

License Number 6505

My license renewal date is December 31, 2003.

All pages or sheets are covered by this seal except:

## LIST CORNERS TO BE INDEXED

CORNER	SECTION	TOWNSHIP	RANGE
E 1/4 CORNER	31	87N	13W
SE CORNER	31	87N	13W
CENTER	31	87N	13W

*Rae*