

INDEX Misc/SC  
MARGIN  
PROOF  
COMPARE

BLACK HAWK COUNTY IOWA:SS  
Filed for record Nov 16, 1998 at 11603  
4:00 P.M. and recorded in Book 332  
of Misc Page 303  
Recorder  
Fee N/C  
BLACK HAWK COUNTY ENGINEER

County Recorder

PREPARED BY: BLACK HAWK COUNTY ENGINEERS OFFICE  
316 E. FIFTH STREET, ROOM 211 WATERLOO, IOWA 50703

PH.# (319) 291-2419  
FAX# (319) 291-2461  
SLSI 9-94  
CERT 12-96

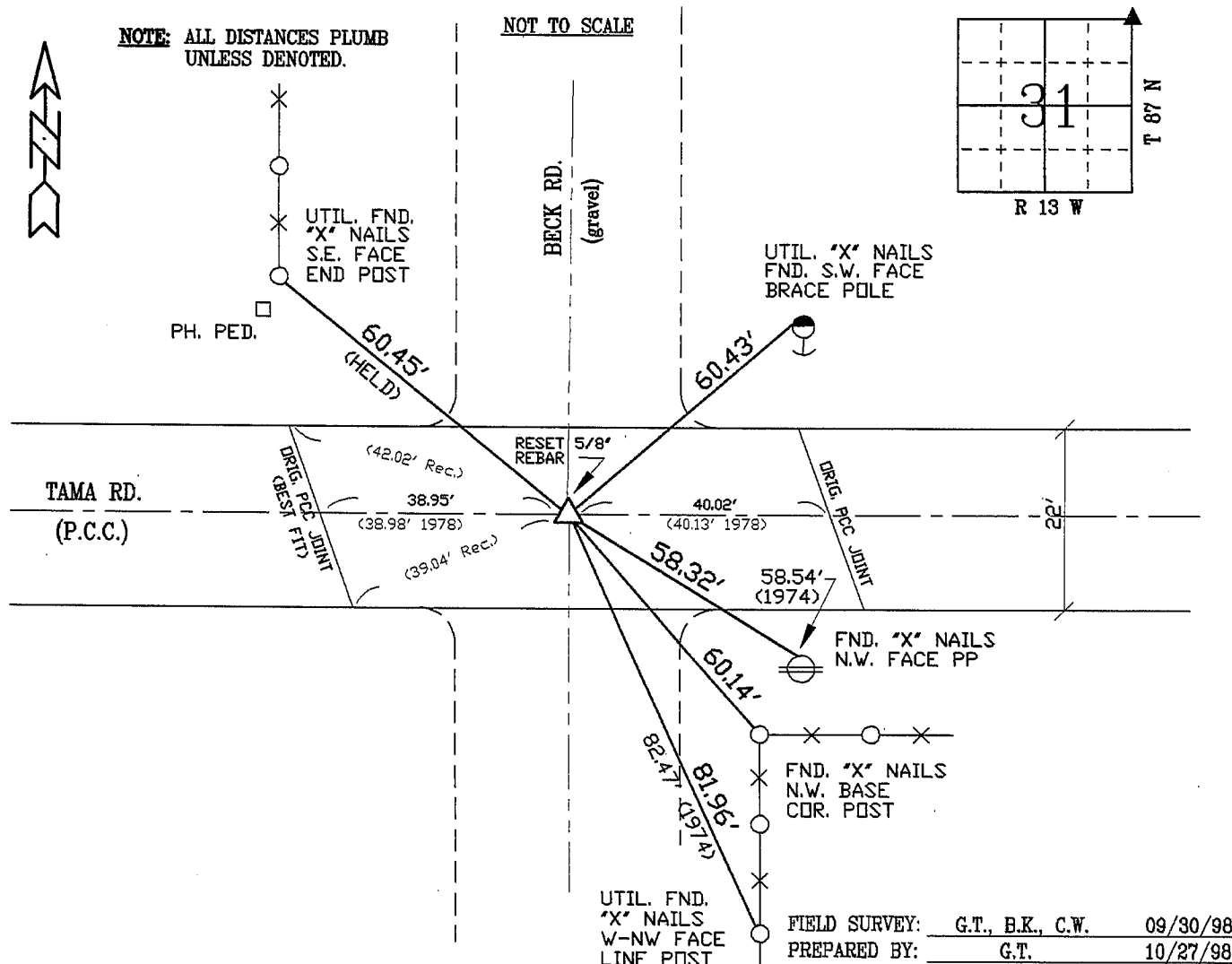
UNITED STATES PUBLIC LAND SURVEY CORNER CERTIFICATE OF  
Land Survey Monuments situated in Section 31, Township 87 N,  
Range 13 W, of the Fifth Principal Meridian, BLACK HAWK County, Iowa.  
Previously recorded in Misc. Book N/A, Page N/A, in County Recorder's Office.

(Show reason for preparing this certificate, the evidence and detailed procedures used in establishing the corner positions and monumentation found or placed.)

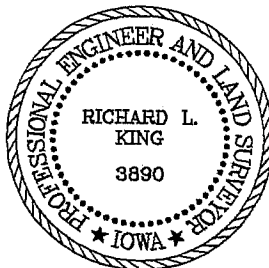
Monument Description and Remarks: CORNER OBLITERATED BY COUNTY FOR  
PCC REMOVAL/REPL. @ INTERSECTION. COUNTY TIES FOUND DERIVED  
NUMEROUS SOLUTIONS. DECIDED TO UTIL. 5/26/78 TIES (OVERLAP BY +.20)  
W/ THE ONLY TIE HELD FROM OCT. 1974, TO THAT OF N.W. END POST.  
RE-EST. 5/8" RBR. (DRILLED) LOC. 0.40' S. CL. JNT.

### PLAN - VIEW

(Show a minimum of three reference ties to durable physical objects, relevant monuments and physical conditions that will enable recovery of the corner.)



### CERTIFICATION



I hereby certify that this land surveying document was prepared and the related survey work was performed by me or under my direct personal supervision and that I am a duly licensed Land Surveyor under the laws of the State of Iowa.

Richard L. King 11/6/98  
Richard L. King (date)

License Number 3890

My license renewal date is December 31, 1999

Pages or sheets covered by this seal:

This Land Corner Certificate Only.

### LIST CORNERS TO BE INDEXED

Corner Section - Township - Range  
N.E. COR. 31 87 N 13 W