

Paul H. Helland, 1107 Technology Parkway, Cedar Falls, Iowa 50613-6951, (319)-266-0161

UNITED STATES PUBLIC LAND SURVEY CORNER CERTIFICATE
OFLAND SURVEY MONUMENTS SITUATED IN SECTION NO. 30, TOWNSHIP NO. 87 NORTH, RANGE
NO. 13 WEST OF THE FIFTH PRINCIPAL MERIDIAN, BLACK HAWK COUNTY, IOWA.PREVIOUSLY RECORDED IN MISC. BK. 306 PG. 942.(SHOW REASON FOR PREPARING THIS CERTIFICATE, THE EVIDENCE AND DETAILED PROCEDURES USED IN ESTABLISHING THE
CORNER POSITIONS AND MONUMENTATION FOUND OR PLACED.)

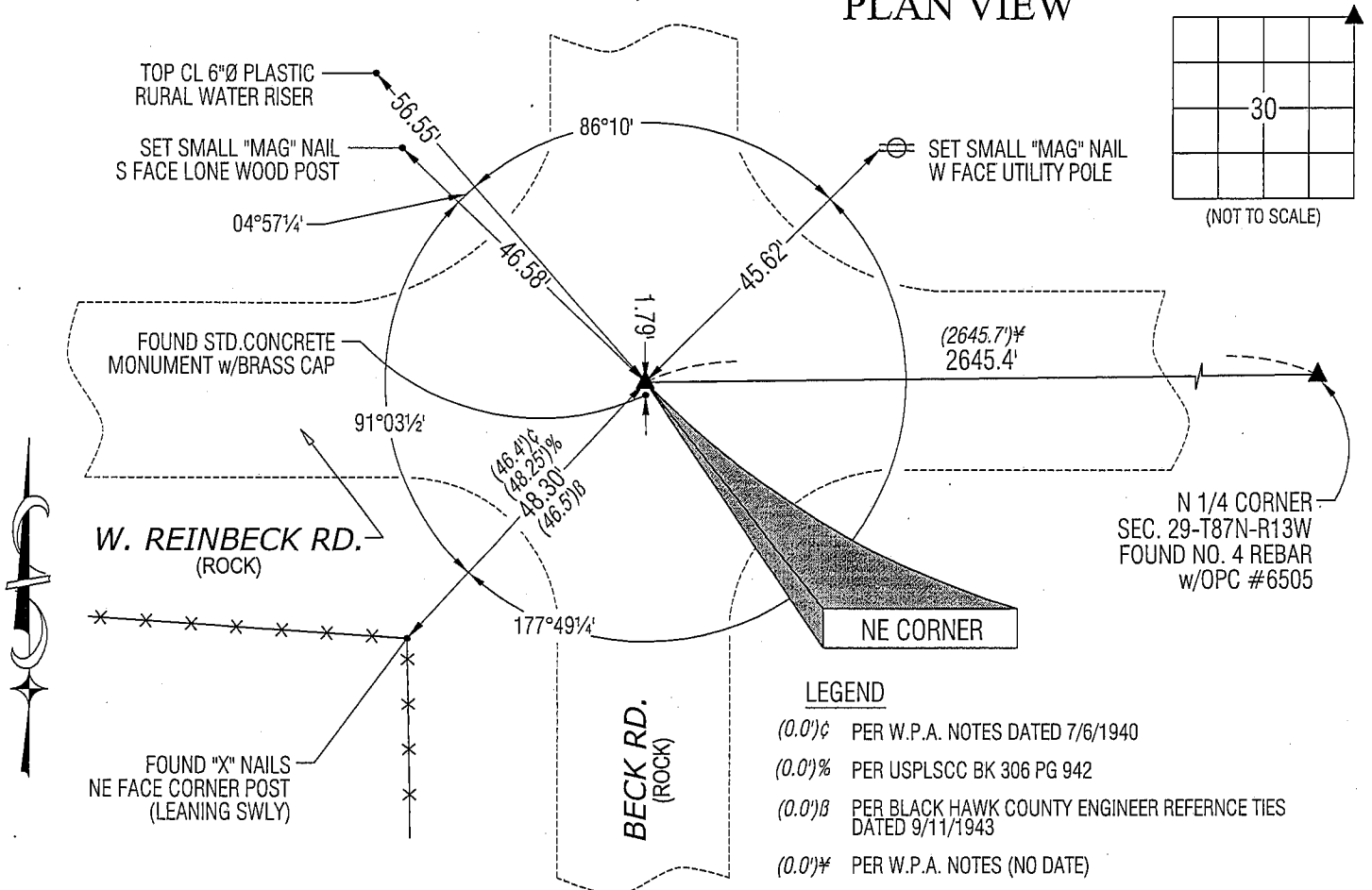
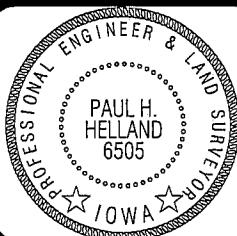
MONUMENT DESCRIPTION AND REMARKS:

USPLSCC 306 MISC. 942 REFERENCE TIES HAVE CHANGED. SURVEY COMPLETED IN THE NE 1/4 NW 1/4 & IN THE NW 1/4 NE
1/4 OF SEC. 29-T87N-R13W.

→ **NE CORNER:** AUDITOR'S SURVEY RECORD BK 1 PG 427 DATED 7/10/1872 CALLS FOR [OLD MOUND]. BLACK HAWK
COUNTY ENGINEER FIELD BK 91 PG 66 (NO DATE) CALLS FOR [FOUND LIMESTONE PUT 2" OAK HUB BESIDE IT]. BLACK
HAWK COUNTY ENGINEER'S FIELD BK 98 PG 18 DATED 8/18/1931 CALLS FOR [FOUND STONE]. W.P.A. NOTES DATED
7/6/1940 CALLS FOR [AT LOCATION INDICATED BY RANDOM LINE DUG HOLE 4' SQ. 4' DEEP FOUND IRON BAR 1/2" x 26".
BLACK HAWK CO. TIES CALLS FOR LIMESTONE AND OAK HUB, **FOUND NO STONE OR HUB**, ALL TIES RAN TO THE IRON
BAR. LOWERED ALL EVIDENCE IN PLACE AND SET C.M. ON TOP WITH CAP MARKED. . . SET TOP OF C.M. 12" DEEP]. BLACK
HAWK COUNTY ENGINEER REFERENCE TIES DATED 9/11/1943 CALL FOR [S.C.M.]. USPLSCC 306 MISC. 942 DATED 6/7/93
CALLS FOR A [FOUND IRON PIN]. FOUND 1" IRON TWIST PIN. REMOVED AND FOUND A LIMESTONE 0.6' ± N-S x 0.6' ± E-W
(TOP VIEW) 1.9' DEEP. RETURNED SAID 1" IRON TWIST PIN TO ORIGINAL LOCATION OVER THE HIGH POINT OF THE STONE.
ALSO FOUND A STD. CONCRETE MONUMENT w/BRASS CAP (1.3' DEEP) 1.79' SOUTH OF SAID TWIST PIN. ALSO FOUND 5/8"
SMOOTH IRON PIN (1.1' DEEP) 1.54' SOUTH OF SAID TWIST PIN. IT APPEARS THAT W.P.A. LIMITS OF EXCAVATION ON
7/6/1940 JUST MISSED FINDING THE LIMESTONE. UTILIZED SAID TWIST PIN OVER LIMESTONE AS CORRECT CORNER.

(SHOW A MINIMUM OF THREE REFERENCE TIES TO DURABLE PHYSICAL OBJECTS, RELEVANT MONUMENTS AND PHYSICAL
CONDITIONS THAT WILL ENABLE RECOVERY OF THE CORNER.)

PLAN VIEW

HELLAND ENGINEERING & SURVEYING, LTD.
1107 Technology Parkway
Cedar Falls, Iowa 50613-6951
(319)-266-0161SHINER = 8D NAIL & 1 5/16"Ø METAL SHINER
BRASS TAG = 13/16"Ø BRASS TAG
OPC = PLASTIC CAP (O=ORANGE, R=RED, Y=YELLOW)
(00) RECORDED AS FILE NAME: 08-202C1.DWGI hereby certify that this land surveying document was prepared
and the related survey work was performed by me or under my
direct personal supervision and that I am a duly licensed Land
Surveyor under the laws of the State of Iowa.Paul H. Helland 7/16/08
Paul H. Helland
License Number 6505
My license renewal date is December 31, 2009.
All pages or sheets are covered by this seal except:

LIST CORNERS TO BE INDEXED

CORNER	SECTION	TOWNSHIP	RANGE
NE CORNER	30	87N	13W
SE CORNER	19	87N	13W
NW CORNER	29	87N	13W
SW CORNER	20	87N	13W

Rec