

IW
P
Z

Document Number: 2009001950
Date: Jul 24, 2008 4:30:00 pm
Aud Fee: 0.00 Rec Fee: 5.00
Trans Tax: 0.00 Rec Management Fee: 1.00
E-Com Fee: 1.00 Non-Standard Page Fee: 0.00
Filed for record in Black Hawk County, Iowa
Judith A. McCarthy, County Recorder

Paul H. Helland, 1107 Technology Parkway, Cedar Falls, Iowa 50613-6951, (319)-266-0161

UNITED STATES PUBLIC LAND SURVEY CORNER CERTIFICATE
OF

LAND SURVEY MONUMENTS SITUATED IN SECTION NO. 29, TOWNSHIP NO. 87 NORTH, RANGE NO. 13 WEST OF THE FIFTH PRINCIPAL MERIDIAN, BLACK HAWK COUNTY, IOWA.
PREVIOUSLY RECORDED IN N/A.

(SHOW REASON FOR PREPARING THIS CERTIFICATE, THE EVIDENCE AND DETAILED PROCEDURES USED IN ESTABLISHING THE CORNER POSITIONS AND MONUMENTATION FOUND OR PLACED.)

MONUMENT DESCRIPTION AND REMARKS:

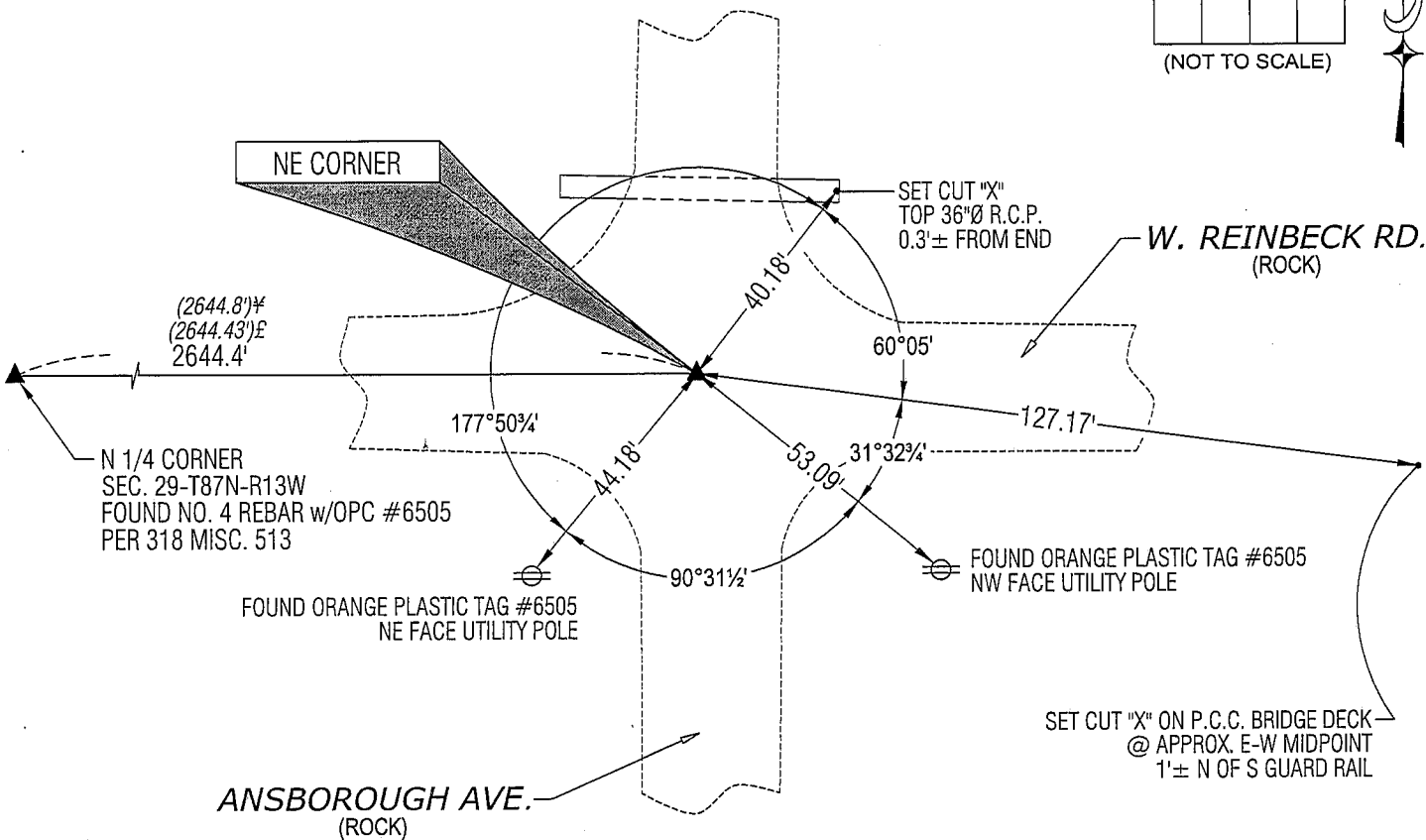
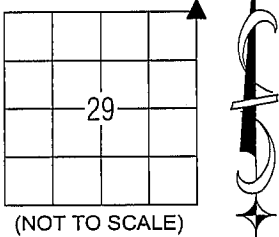
NO USPLSCC ON FILE. SURVEY COMPLETED IN THE NE 1/4 NW 1/4 & NW 1/4 NE 1/4 OF SEC. 29-T87N-R13W.
NE CORNER: AUDITOR'S SURVEY RECORD BK 1 PG 427 DATED 7/10/1872 CALLS FOR [STONE IN OLD]. W.P.A. NOTES DATED 5/17/1939 CALL FOR [AT LOCATION INDICATED BY RANDOM LINE DUG HOLE 5 FT. SQ. 18" DEEP. FOUND WOOD STAKE 2"x1"x18" ALSO SEVERAL SMALL CHUNKS OF LIMESTONE AND REMNANT OF AN OLD OAK HUB LOOKED AS IF STONE AND OAK HUB HAD BEEN DISTURBED BY FARMERS DIGGING. LOWERED ALL EVIDENCE IN PLACE AND SET C.M. SET TOP OF C.M. 24" DEEP.] BLACK HAWK COUNTY ENGINEER REFERENCE TIES (NO DATE) CALL FOR [S.C.M.]. PLAT OF SURVEY BY PAUL HELLAND DATED 1995 CALLS FOR [FOUND 1" PIN]. FOUND 6 SIDED 1"o.d. IRON PIN (1.1' LONG) 0.9' DEEP. REMOVED AND PROBED IN SAID PIN'S LOCATION. HIT SOMETHING VERY HARD (BELIEVED TO BE STD. CONCRETE MONUMENT) @ 2.0' DEEP. RETURNED SAID 6 SIDED 1"o.d. IRON PIN TO ORIGINAL HORIZONTAL POSITION (NOW BEING 0.4'± DEEP) AND UTILIZED AS THE CORNER.

(SHOW A MINIMUM OF THREE REFERENCE TIES TO DURABLE PHYSICAL OBJECTS, RELEVANT MONUMENTS AND PHYSICAL CONDITIONS THAT WILL ENABLE RECOVERY OF THE CORNER.)

LEGEND

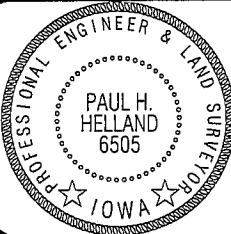
- (0.0')# PER W.P.A. NOTES
- (0.0')E PER PLAT OF SURVEY BY PAUL HELLAND DATED 1995

PLAN VIEW



HELLAND ENGINEERING & SURVEYING, LTD.
1107 Technology Parkway
Cedar Falls, Iowa 50613-6951
(319)-266-0161

SHINER = 8D NAIL & 1 5/16"Ø METAL SHINER
BRASS TAG = 13/16"Ø BRASS TAG
OPC = PLASTIC CAP (O=ORANGE, R=RED, Y=YELLOW)
(00) RECORDED AS FILE NAME: 08-202C2.DWG



I hereby certify that this land surveying document was prepared and the related survey work was performed by me or under my direct personal supervision and that I am a duly licensed Land Surveyor under the laws of the State of Iowa.
Paul H. Helland 7/16/08
Paul H. Helland
License Number 6505
My license renewal date is December 31, 2009.
All pages or sheets are covered by this seal except:

LIST CORNERS TO BE INDEXED			
CORNER	SECTION	TOWNSHIP	RANGE
NE CORNER	29	87N	13W
SE CORNER	20	87N	13W
SW CORNER	21	87N	13W
NW CORNER	28	87N	13W

Rac