

Paul H. Helland, 1107 Technology Parkway, Cedar Falls, Iowa 50613-6951, (319)-266-0161

UNITED STATES PUBLIC LAND SURVEY CORNER CERTIFICATE
OFLAND SURVEY MONUMENTS SITUATED IN SECTION NO. 29, TOWNSHIP NO. 87 NORTH, RANGE
NO. 13 WEST OF THE FIFTH PRINCIPAL MERIDIAN, BLACK HAWK COUNTY, IOWA.PREVIOUSLY RECORDED IN 328 MISC. 513(SHOW REASON FOR PREPARING THIS CERTIFICATE, THE EVIDENCE AND DETAILED PROCEDURES USED IN ESTABLISHING THE
CORNER POSITIONS AND MONUMENTATION FOUND OR PLACED.)

MONUMENT DESCRIPTION AND REMARKS:

USPLSCC 328 MISC. 513 REFERENCE TIES HAVE CHANGED. SURVEY COMPLETED IN THE NE 1/4 NW 1/4 & NW 1/4 NE 1/4
OF SEC. 29-T87N-R13W.

→ **N 1/4 CORNER:** W.P.A. NOTED DATED 7/6/1940 CALL FOR [AT LOCATION INDICATED BY RANDOM LINE DUG HOLE 4" SQ. 18"
DEEP FOUND NIGGER HEAD 14"x12"x9" REMNANT OF AN OLD OAK HUB ALONG SIDE OF STONE. LOWERED ALL EVIDENCE IN
PLACE AND SET C.M. ON TOP WITH CAP MARKED. . . SET TOP OF C.M. 12" DEEP]. BLACK HAWK COUNTY ENGINEER
REFERENCE TIES (NO DATE) CALL FOR [S.C.M.]. PLAT OF SURVEY BY PAUL HELLAND DATED 1995 CALLS FOR [SET PIN].
USPLSCC 328 MISC. 513 DATED 12/15/1997 CALLS FOR [FOUND NO. 4 REBAR w/CAP #6505]. W.P.A. NOTES (NO DATE)
CALL FOR [FOUND NIGGERHEAD 14"x12"x9" REMNANT OF AN OLD OAK HUB ALONG SIDE OF STONE]. FOUND NO. 4 REBAR
w/OPC #6505 0.2' DEEP. THIS CORRESPONDS WITHIN REASON TO TWO REMAINING TIES. UTILIZED AS CORNER.

(SHOW A MINIMUM OF THREE REFERENCE TIES TO DURABLE PHYSICAL OBJECTS, RELEVANT MONUMENTS AND PHYSICAL
CONDITIONS THAT WILL ENABLE RECOVERY OF THE CORNER.)

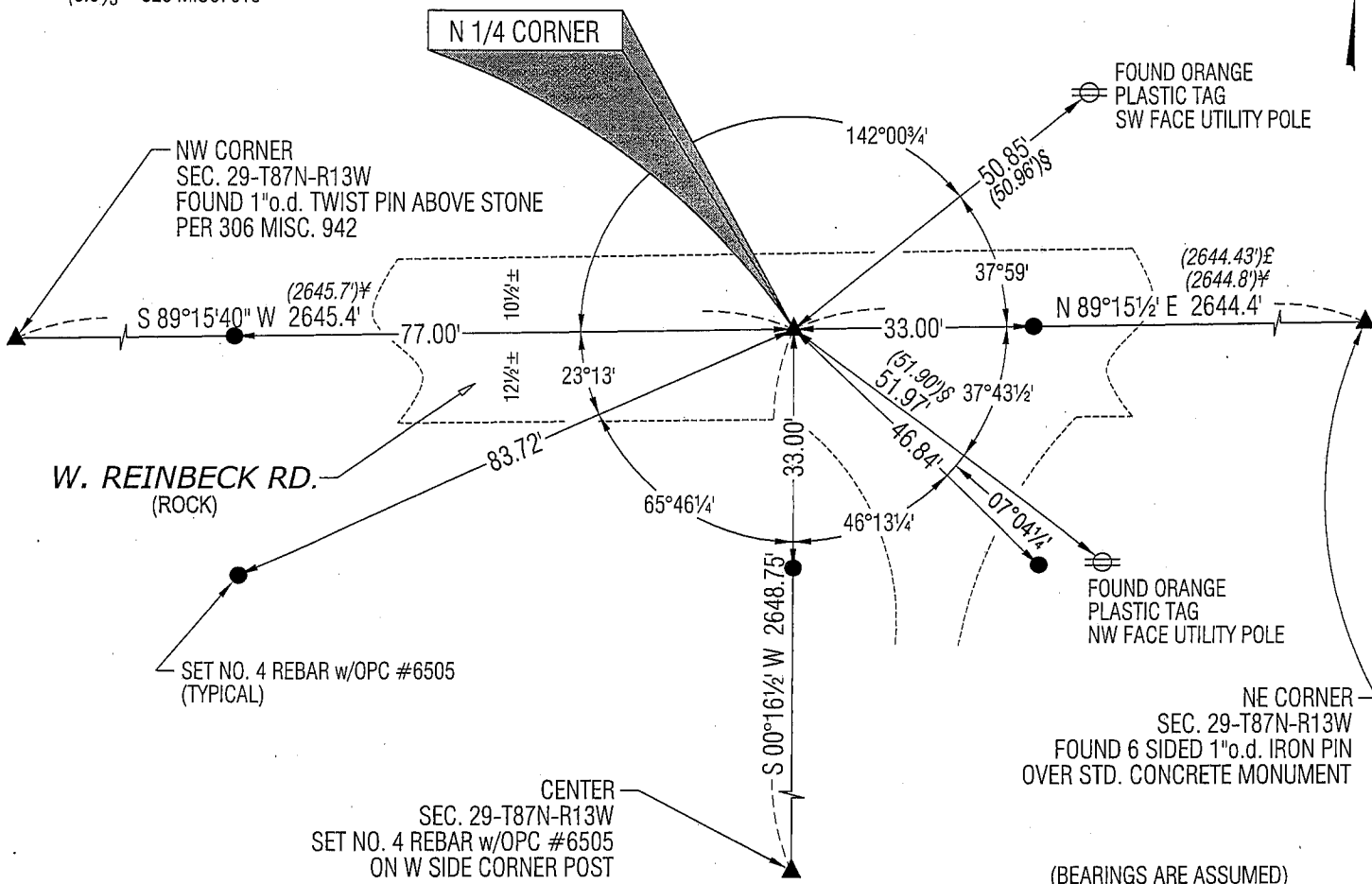
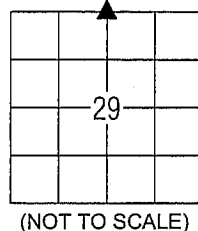
PLAN VIEW

LEGEND

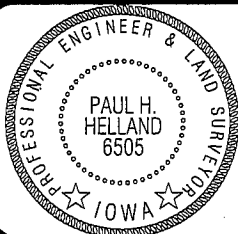
(0.0)'# PER W.P.A. NOTES

(0.0)'E PER PLAT OF SURVEY
BY PAUL HELLAND DATED 1995

(0.0)'S 328 MISC. 513



(BEARINGS ARE ASSUMED)

HELLAND ENGINEERING & SURVEYING, LTD.
1107 Technology Parkway
Cedar Falls, Iowa 50613-6951
(319)-266-0161SHINER = 8D NAIL & 1 5/16"Ø METAL SHINER
BRASS TAG = 13/16"Ø BRASS TAG
OPC = PLASTIC CAP (O=ORANGE, R=RED, Y=YELLOW)
(00') RECORDED AS FILE NAME: 08-202C3.DWGI hereby certify that this land surveying document was prepared
and the related survey work was performed by me or under my
direct personal supervision and that I am a duly licensed Land
Surveyor under the laws of the State of Iowa.Paul H. Helland
License Number 6505
My license renewal date is December 31, 2009.
All pages or sheets are covered by this seal except:

LIST CORNERS TO BE INDEXED

CORNER	SECTION	TOWNSHIP	RANGE
N 1/4 CORNER	29	87N	13W
S 1/4 CORNER	20	87N	13W

Boc