

VAN WINKLE-JACOB ENGINEERING INC 1501 TECHNOLOGY PARKWAY SUITE 100
CEDAR FALLS IA 50613

UNITED STATES PUBLIC LAND SURVEY CORNER CERTIFICATE OF

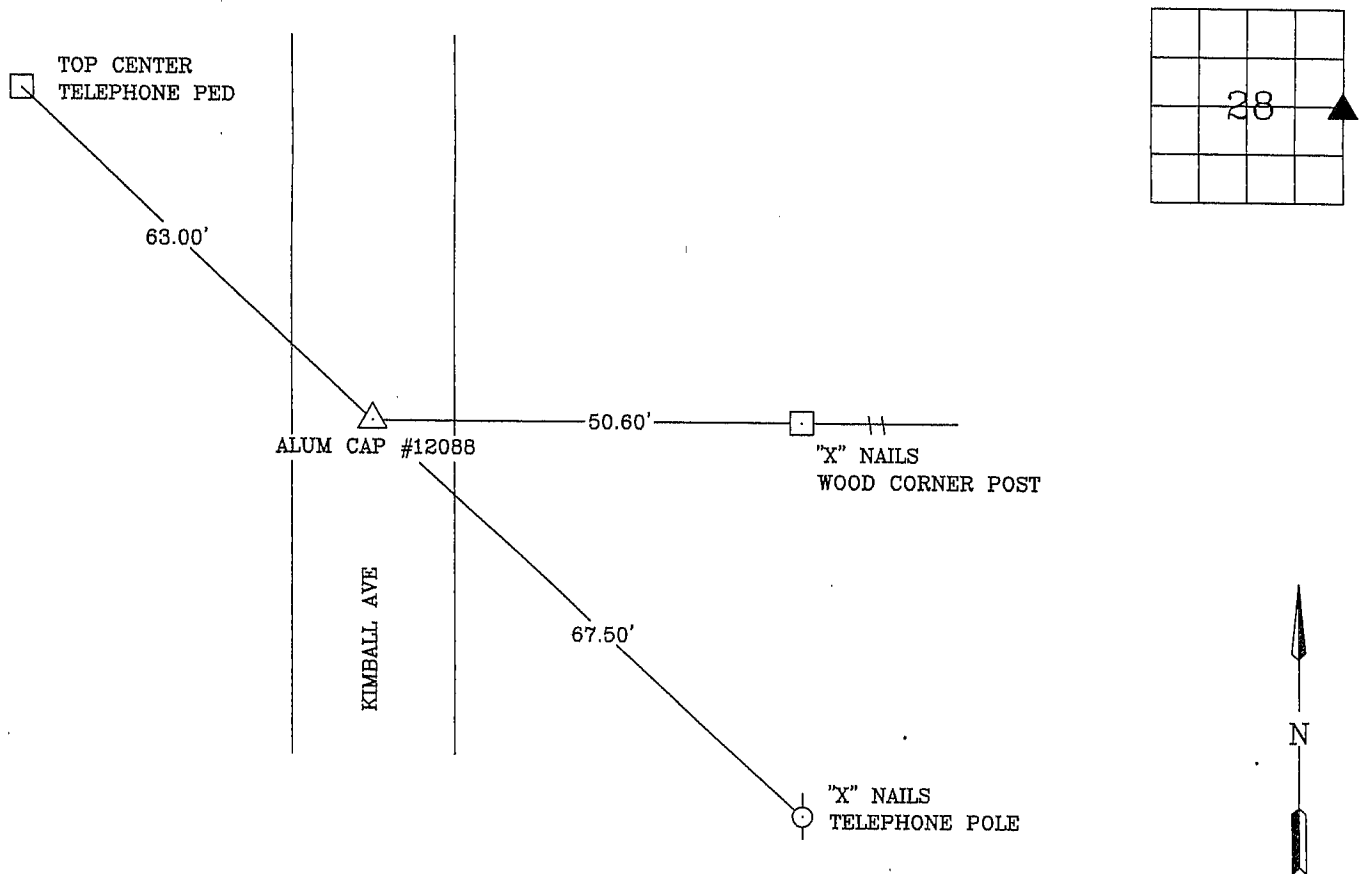
Land Survey Monuments situated in Section 28, Township 87 N, Range 13 W, of the Fifth Principal Meridian, BLACK HAWK County, Iowa
Previously recorded in Book _____, Page _____.

Show reason for preparing this certificate, the evidence and detailed procedures used in establishing the corner positions and monumentation found or placed.)

Monument Description and Remarks: E 1/4 - SET 5/8" REBAR W/ ALUMINUM CAP #12088 6" DEEP
DUG 3' X 3' HOLE FOUND NOTHING, REESTABLISHED CORNER AT THE MIDPOINT BETWEEN THE
NE & SE CORNER; WHICH AGREES WITH THE ONE REMAINING SECTION CORNER TIE (COUNTY ENGINEER)
NO PREVIOUS CORNER CERTIFICATE ON FILE

PLAN - VIEW

(Show a minimum of three reference ties to durable physical objects, relevant monuments and physical conditions recovery of the corner.)



I hereby certify that the survey work was completed and this certificate was prepared by me or under my direct personal supervision and that I am a duly registered land surveyor under the laws of the state of Iowa.



Wendell J. Lupkes 8-29-05
IOWA L.L.S. NO. 12088

List Corners to be Indexed

Corners	Section	Twp	Range
E(1/4)	28	89	13
W(1/4)	27	89	13



VJ Engineering, Inc.
1501 Technology Parkway
Cedar Falls, Iowa - 319-266-5829

SECTION CORNER
REFERENCE TIES

Scale
NONE
drawn by
MAK
date
8/25/05