

*HELLAND ENGINEERING

Jeffrey P. Helland, 1107 Technology Parkway, Cedar Falls, Iowa 50613-6951, (319)-266-0161

UNITED STATES PUBLIC LAND SURVEY CORNER CERTIFICATE OF

LAND SURVEY MONUMENTS SITUATED IN SECTION NO. 27, TOWNSHIP NO. 87 NORTH, RANGE
NO. 13 WEST OF THE FIFTH PRINCIPAL MERIDIAN, BLACK HAWK COUNTY, IOWA.
PREVIOUSLY RECORDED IN N/A

(SHOW REASON FOR PREPARING THIS CERTIFICATE, THE EVIDENCE AND DETAILED PROCEDURES USED IN ESTABLISHING THE
CORNER POSITIONS AND MONUMENTATION FOUND OR PLACED.)

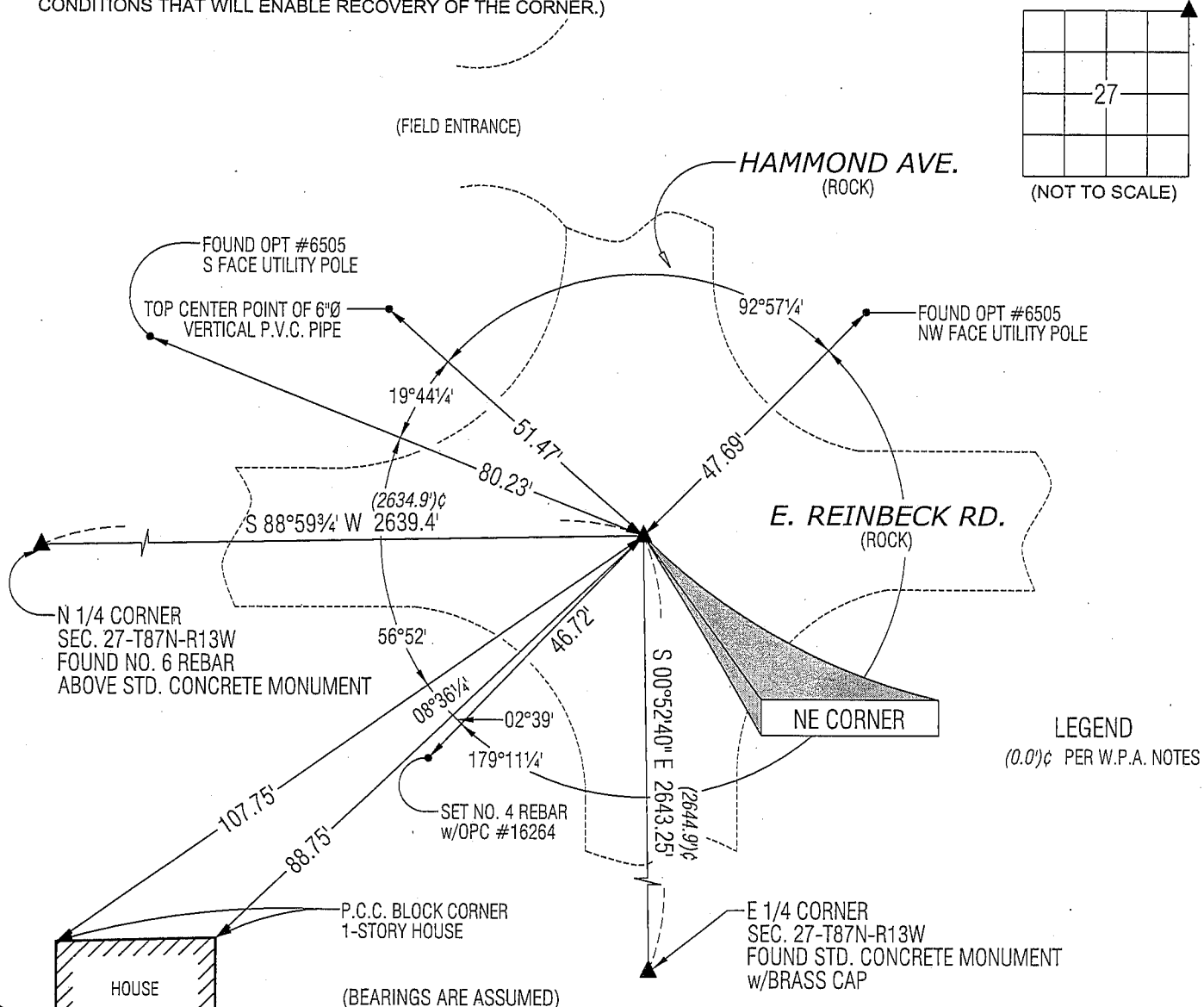
MONUMENT DESCRIPTION AND REMARKS:

NO USPLSCC ON FILE. SURVEY COMPLETED IN THE NE 1/4 OF SEC. 27-T87N-R13W.

→ **NE CORNER:** W.P.A. DATED 6/13/1940 CALLS FOR [AT LOCATION INDICATED BY RANDOM LINE DUG HOLE 4' SQ. 18" DEEP
FOUND TWO LIMESTONE 10"x6"x4" AND 17"x8"x6" ONE ON TOP OF OTHER. LOWERED ALL EVIDENCE IN PLACE AND SET C.M.
ON TOP WITH CAP MARKED. SET TOP OF C.M. 12" DEEP.]. FOUND 2" o.d. x 1.25' LONG PIPE w/NO. 4 REBAR IN CENTER.
EXCAVATED BELOW AND FOUND STD. CONCRETE MONUMENT w/BRASS CAP 1.8' DEEP BELOW PIPE. UTILIZED SAID PIPE
w/NO. 4 REBAR IN CENTER, PIPE AND REBAR ARE 0.4'± DEEP.

PLAN VIEW

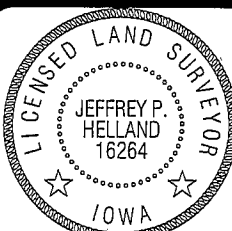
(SHOW A MINIMUM OF THREE REFERENCE TIES TO DURABLE PHYSICAL OBJECTS, RELEVANT MONUMENTS AND PHYSICAL
CONDITIONS THAT WILL ENABLE RECOVERY OF THE CORNER.)



HELLAND ENGINEERING & SURVEYING, LTD.

1107 Technology Parkway
Cedar Falls, Iowa 50613-6951
(319)-266-0161

SHINER = 8D NAIL & 1 5/16"Ø METAL SHINER
BRASS TAG = 13/16"Ø BRASS TAG
OPC = PLASTIC CAP (O=ORANGE, R=RED, Y=YELLOW)
(00') RECORDED AS FILE NAME: 09-248C1.DWG



I hereby certify that this land surveying document was prepared
and the related survey work was performed by me or under my
direct personal supervision and that I am a duly licensed Land
Surveyor under the laws of the State of Iowa.

Jeffrey P. Helland 10/14/09
Jeffrey P. Helland
License Number 16264
My license renewal date is December 31, 2009.
All pages or sheets are covered by this seal except:

LIST CORNERS TO BE INDEXED.

CORNER	SECTION	TOWNSHIP	RANGE
NE CORNER	27	87N	13W
SE CORNER	22	87N	13W
SW CORNER	23	87N	13W
NW CORNER	26	87N	13W

(9.00)

Rec