



Doc ID: 003943900001 Type: GEN
Kind: CORNER
Recorded: 10/21/2009 at 01:05:19 PM
Fee Amt: \$9.00 Page 1 of 1
Instr# 200900012067
Black Hawk County Iowa
JUDITH A MCCARTHY RECORDER
Book 1080 Page 90382 - 90382

File 2010-00008174

*HELLAND ENGINEERING

Jeffrey P. Helland, 1107 Technology Parkway, Cedar Falls, Iowa 50613-6951, (319)-266-0161

UNITED STATES PUBLIC LAND SURVEY CORNER CERTIFICATE OF

LAND SURVEY MONUMENTS SITUATED IN SECTION NO. 27, TOWNSHIP NO. 87 NORTH, RANGE
NO. 13 WEST OF THE FIFTH PRINCIPAL MERIDIAN, BLACK HAWK COUNTY, IOWA.
PREVIOUSLY RECORDED IN N/A

(SHOW REASON FOR PREPARING THIS CERTIFICATE, THE EVIDENCE AND DETAILED PROCEDURES USED IN ESTABLISHING THE
CORNER POSITIONS AND MONUMENTATION FOUND OR PLACED.)

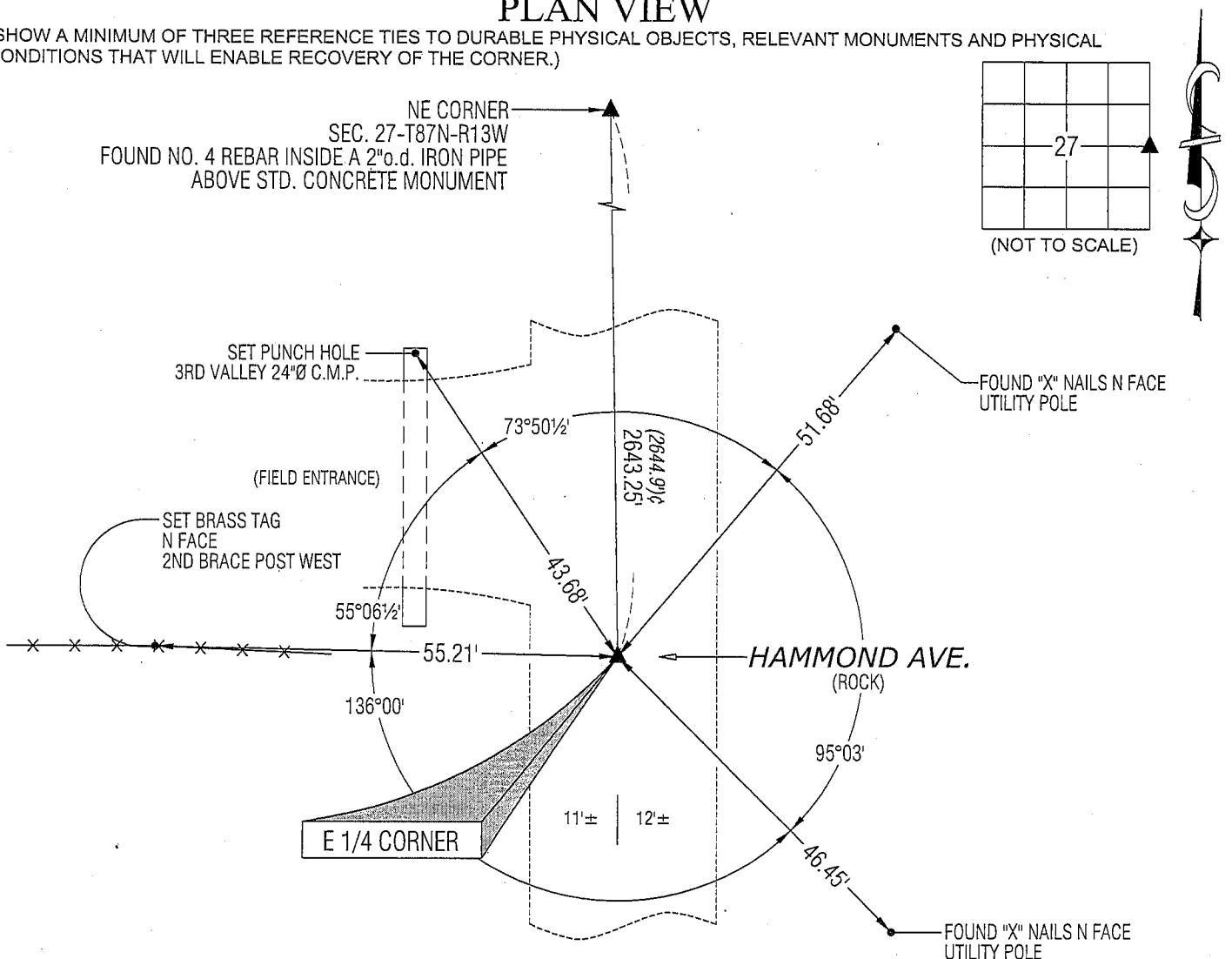
MONUMENT DESCRIPTION AND REMARKS:

NO USPLSCC ON FILE. SURVEY COMPLETED IN THE NE 1/4 OF SEC. 27-T87N-R13W.

→ **E 1/4 CORNER:** W.P.A. NOTED DATED 6/13/1940 CALLS FOR [AT LOCATION INDICATED BY A RANDOM LINE DUG HOLE 4' SQ.
18" DEEP. FOUND IRON BAR 1/2"x30" LOWERED ALL EVIDENCE IN PLACE AND SET C.M. ON TOP WITH CAP MARKED. SET TOP
OF C.M. 12" DEEP.]. FOUND STD. CONCRETE MONUMENT w/BRASS CAP 0.35'± DEEP w/60d NAIL & ORANGE FLAGGING.
SAID NAIL IS 0.17' NORTH OF C.M.

PLAN VIEW

(SHOW A MINIMUM OF THREE REFERENCE TIES TO DURABLE PHYSICAL OBJECTS, RELEVANT MONUMENTS AND PHYSICAL
CONDITIONS THAT WILL ENABLE RECOVERY OF THE CORNER.)



LEGEND

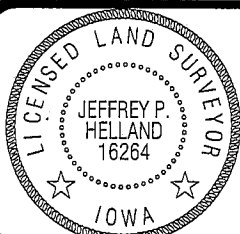
(0.0')± PER W.P.A. NOTES



HELLAND ENGINEERING & SURVEYING, LTD.

1107 Technology Parkway
Cedar Falls, Iowa 50613-6951
(319)-266-0161

SHINER = 8D NAIL & 1 5/16" Ø METAL SHINER
BRASS TAG = 13/16" Ø BRASS TAG
OPC = PLASTIC CAP (O=ORANGE, R=RED, Y=YELLOW)
(00') RECORDED AS FILE NAME: 09-248C2.DWG



I hereby certify that this land surveying document was prepared
and the related survey work was performed by me or under my
direct personal supervision and that I am a duly licensed Land
Surveyor under the laws of the State of Iowa.

Jeffrey P. Helland 10/14/09
Jeffrey P. Helland
License Number 16264
My license renewal date is December 31, 2009.
All pages or sheets are covered by this seal except:

LIST CORNERS TO BE INDEXED

CORNER	SECTION	TOWNSHIP	RANGE
E 1/4 CORNER	27	87N	13W
W 1/4 CORNER	26	87N	13W

(9.00)

Rec