

Reserved for County Recorder's use.

2025-12269

RECORDED: 08/21/2025 02:35:26 PM

RECORDING FEE: \$7.00

REVENUE TAX: \$

COMBINED FEE: \$7.00

SANDIE L. SMITH, RECORDER  
BLACK HAWK COUNTY, IOWA

Kyle J. Helland, 6109 Chancellor Drive, Cedar Falls, Iowa 50613-6916, (319)-266-0161

# UNITED STATES PUBLIC LAND SURVEY CORNER CERTIFICATE OF

LAND SURVEY MONUMENTS SITUATED IN SECTION NO. 26, TOWNSHIP NO. 87 NORTH, RANGE NO. 13 WEST OF THE FIFTH PRINCIPAL MERIDIAN, BLACK HAWK COUNTY, IOWA.  
PREVIOUSLY RECORDED IN N/A.

(SHOW REASON FOR PREPARING THIS CERTIFICATE, THE EVIDENCE AND DETAILED PROCEDURES USED IN ESTABLISHING THE CORNER POSITIONS AND MONUMENTATION FOUND OR PLACED.)

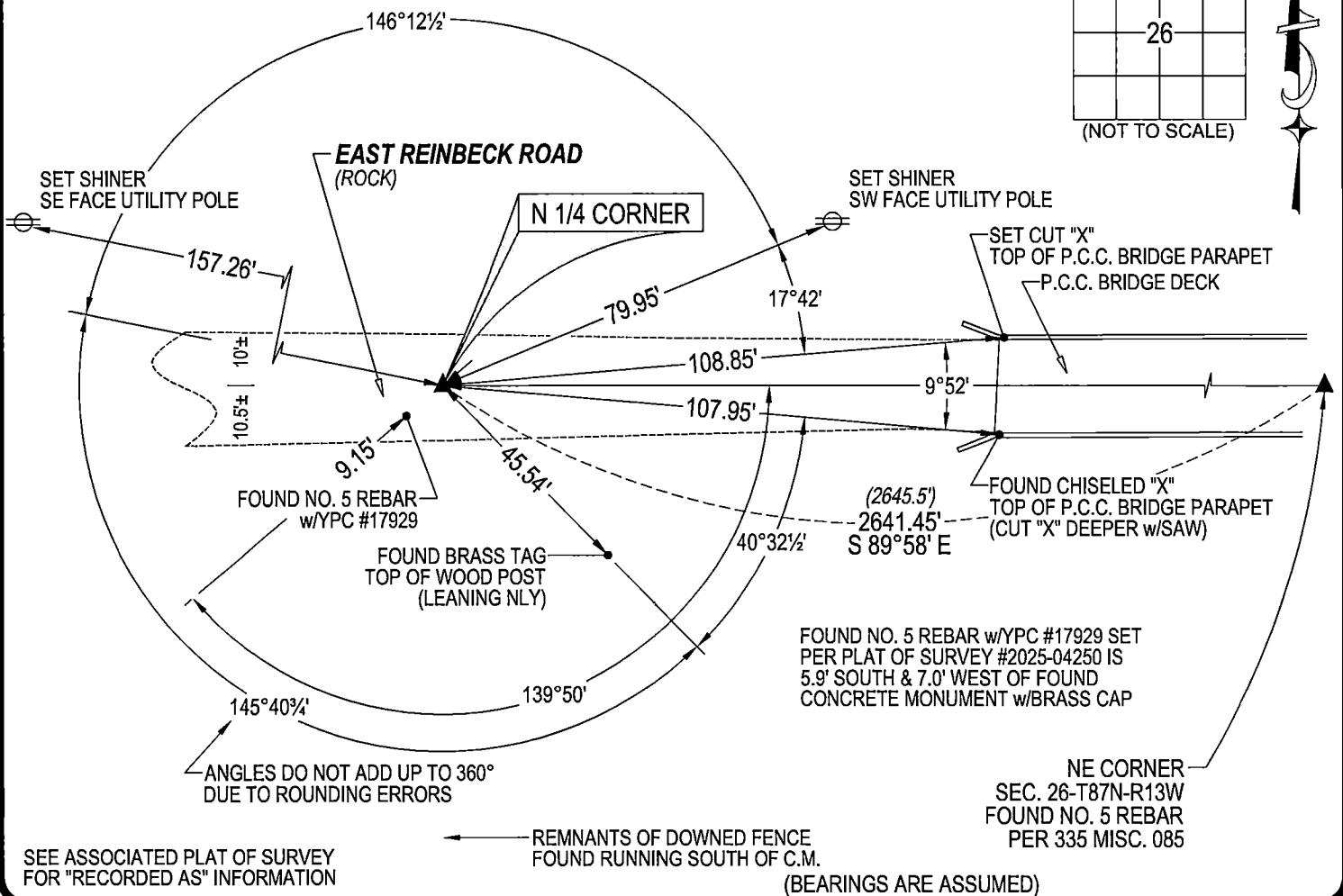
### MONUMENT DESCRIPTION AND REMARKS:

NO USPLSCC ON FILE. SURVEY COMPLETED IN THE NE 1/4 OF SEC. 26-T87N-R13W.

**N 1/4 CORNER:** WPA NOTES DATED 05/01/1940 (RETIED 06/13/1940) CALLS FOR [AT LOCATION INDICATED BY RANDOM LINE DUG HOLE 6' FT SQ AND 7 FT DEEP. FOUND OLD OAK HUB 2"x2"x12" VERY ROTTEN AND TWO SMALL PEICES OF LIMESTONE AT SIDE OF HUB. RAISE EVIDENCE IN PLACE AND SET C.M. ON TOP WITH CAP MARKED "23+26" SET TOP OF C.M. 18" DEEP.] PLAT OF SURVEY RECORDED IN #2025-04250 DATED 03/14/2025 CALLS FOR [SET 5/8" REBAR W/YELLOW CAP #17929.] SAID 5/8" REBAR WAS SET AT THE MIDPOINT OF LINE BETWEEN THE NW CORNER AND THE NE CORNER OF SEC. 26-T87N-R13W (SAID PLAT #2025-04250 MISIDENTIFIES THE RANGE AS 12W, IT IS ACTUALLY 13W). WPA CHAINING NOTES PAGE 50 INDICATES THAT THE CORNER IS NOT AT THE MIDPOINT OF THE NORTH LINE OF SAID SEC. 26-T87N-R13W. STARTED EXCAVATION 6± NORTH AND 6± EAST OF FOUND NO. 5 REBAR w/YPC #17929. FOUND STANDARD CONCRETE MONUMENT w/BRASS CAP (5.3'± DEEP) STAMPED w/"23+26", SET NO. 4 REBAR w/2"Ø ALUMINUM CAP #23212 ABOVE CONCRETE MONUMENT (0.4'± DEEP) AND UTILIZED AS THE CORNER.

(SHOW A MINIMUM OF THREE REFERENCE TIES TO DURABLE PHYSICAL OBJECTS, RELEVANT MONUMENTS AND PHYSICAL CONDITIONS THAT WILL ENABLE RECOVERY OF THE CORNER.)

## PLAN VIEW



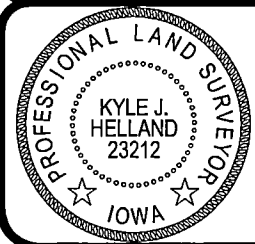
SEE ASSOCIATED PLAT OF SURVEY FOR "RECORDED AS" INFORMATION

(BEARINGS ARE ASSUMED)



**HELLAND ENGINEERING & SURVEYING, LTD.**  
6109 Chancellor Drive  
Cedar Falls, Iowa 50613-6916  
(319)-266-0161

BRASS TAG = 4d. NAIL & 13/16"Ø BRASS TAG DRAWN BY: JPH  
SHINER = 1"Ø STEEL SHINER w/MASONRY NAIL  
OPC = PLASTIC CAP (O=ORANGE, R=RED, Y=YELLOW)  
(00) RECORDED AS FILE NAME: 25-174-28.DWG



I hereby certify that this land surveying document was prepared and the related survey work was performed by me or under my direct personal supervision and that I am a duly licensed Professional Land Surveyor under the laws of the State of Iowa.  
*Kyle J. Helland*  
Kyle J. Helland  
License Number 23212  
My license renewal date is December 31, 2025.  
All pages or sheets are covered by this seal except:

### LIST CORNERS TO BE INDEXED

CORNER	SECTION	TOWNSHIP	RANGE
N 1/4 CORNER	26	87N	13W
S 1/4 CORNER	23	87N	13W