

HELLAND ENGINEERING & SURVEYING

Jeffrey P. Helland, 1107 Technology Parkway, Cedar Falls, Iowa 50613-6951, (319)-266-0161

UNITED STATES PUBLIC LAND SURVEY CORNER CERTIFICATE
OF

LAND SURVEY MONUMENTS SITUATED IN SECTION NO. 25, TOWNSHIP NO. 87 NORTH, RANGE
NO. 13 WEST OF THE FIFTH PRINCIPAL MERIDIAN, BLACK HAWK COUNTY, IOWA.

PREVIOUSLY RECORDED IN _____

(SHOW REASON FOR PREPARING THIS CERTIFICATE, THE EVIDENCE AND DETAILED PROCEDURES USED IN ESTABLISHING THE
CORNER POSITIONS AND MONUMENTATION FOUND OR PLACED.)

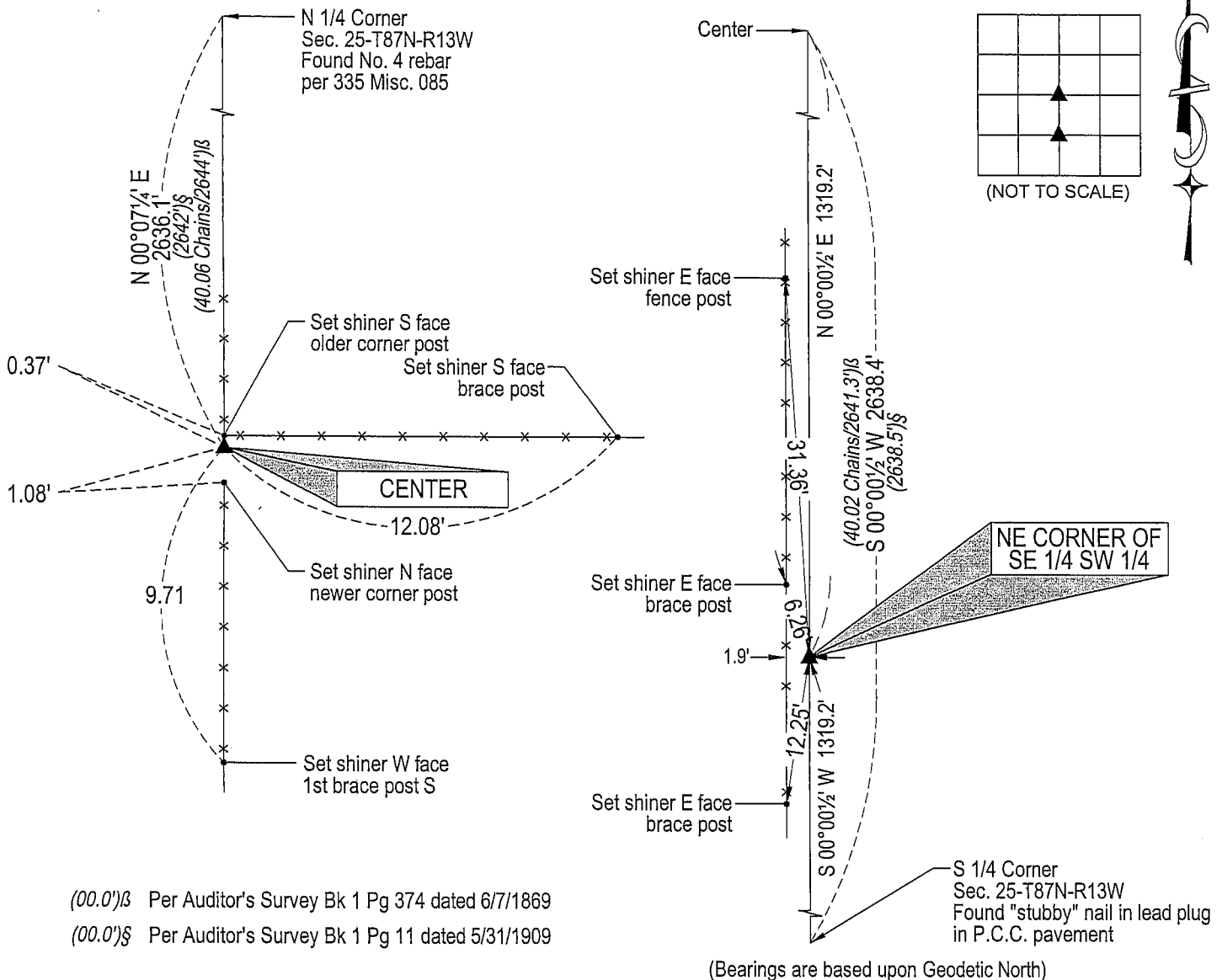
MONUMENT DESCRIPTION AND REMARKS:

No USPLSCC on file. Survey completed in the SW 1/4 of Sec. 25-T87N-T13W.

- CENTER: No Black Hawk County Engineer reference ties available. Auditor's Survey Bk 1 Pg 374 dated 6/7/1869 calls for [Stone] at the corner. Auditor's Survey Bk 1 Pg 11 dated 5/31/1909 calls for [Stone] at corner. Found black granite stone 0.3'N-Sx0.3'E-W (top view) x 0.9' long. Stone is 0.8' deep and has a distinct point on top, set No. 4 rebar w/OPC #16264 for magnetic detection 0.08' North of point.
- NE CORNER OF SE 1/4 SW 1/4: No Black Hawk County Engineer reference ties available. Set No. 4 rebar w/OPC #16264 at the midpoint of a line between the S 1/4 Corner and Center.

PLAN VIEW

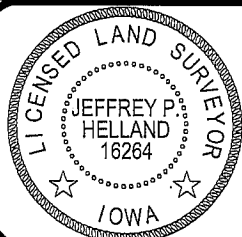
(SHOW A MINIMUM OF THREE REFERENCE TIES TO DURABLE PHYSICAL OBJECTS, RELEVANT MONUMENTS AND PHYSICAL
CONDITIONS THAT WILL ENABLE RECOVERY OF THE CORNER.)



HES HELLAND ENGINEERING & SURVEYING, LTD.
1107 Technology Parkway
Cedar Falls, Iowa 50613-6951
(319)-266-0161

shiner = 8d nail & 1 15/16"Ø metal shiner
OPC = Plastic cap (O=orange, R=red, Y=yellow)

(00') Recorded As File Name: 05-270c3.dwg



I hereby certify that this land surveying document was prepared
and the related survey work was performed by me or under my
direct personal supervision and that I am a duly licensed Land
Surveyor under the laws of the State of Iowa.

Jeffrey P. Helland 9/17/05
Jeffrey P. Helland
License Number 16264
My license renewal date is December 31, 2005.
All pages or sheets are covered by this seal except:

LIST CORNERS TO BE INDEXED

CORNER	SECTION	TOWNSHIP	RANGE
CENTER	25	87N	13W
NE CORNER SE 1/4 SW 1/4	25	87N	13W