

Reserved for County Recorder's use.

2025-18455

RECORDED: 12/16/2025 08:55:14 AM

RECORDING FEE: \$7.00

REVENUE TAX: \$

COMBINED FEE: \$7.00

SANDIE L. SMITH, RECORDER  
BLACK HAWK COUNTY, IOWA

Kyle J. Helland, 6109 Chancellor Drive, Cedar Falls, Iowa 50613-6916, (319)-266-0161

# UNITED STATES PUBLIC LAND SURVEY CORNER CERTIFICATE OF

LAND SURVEY MONUMENTS SITUATED IN SECTION NO. 25, TOWNSHIP NO. 87 NORTH, RANGE NO. 13 WEST OF THE FIFTH PRINCIPAL MERIDIAN, BLACK HAWK COUNTY, IOWA.  
PREVIOUSLY RECORDED IN N/A.

(SHOW REASON FOR PREPARING THIS CERTIFICATE, THE EVIDENCE AND DETAILED PROCEDURES USED IN ESTABLISHING THE CORNER POSITIONS AND MONUMENTATION FOUND OR PLACED.)

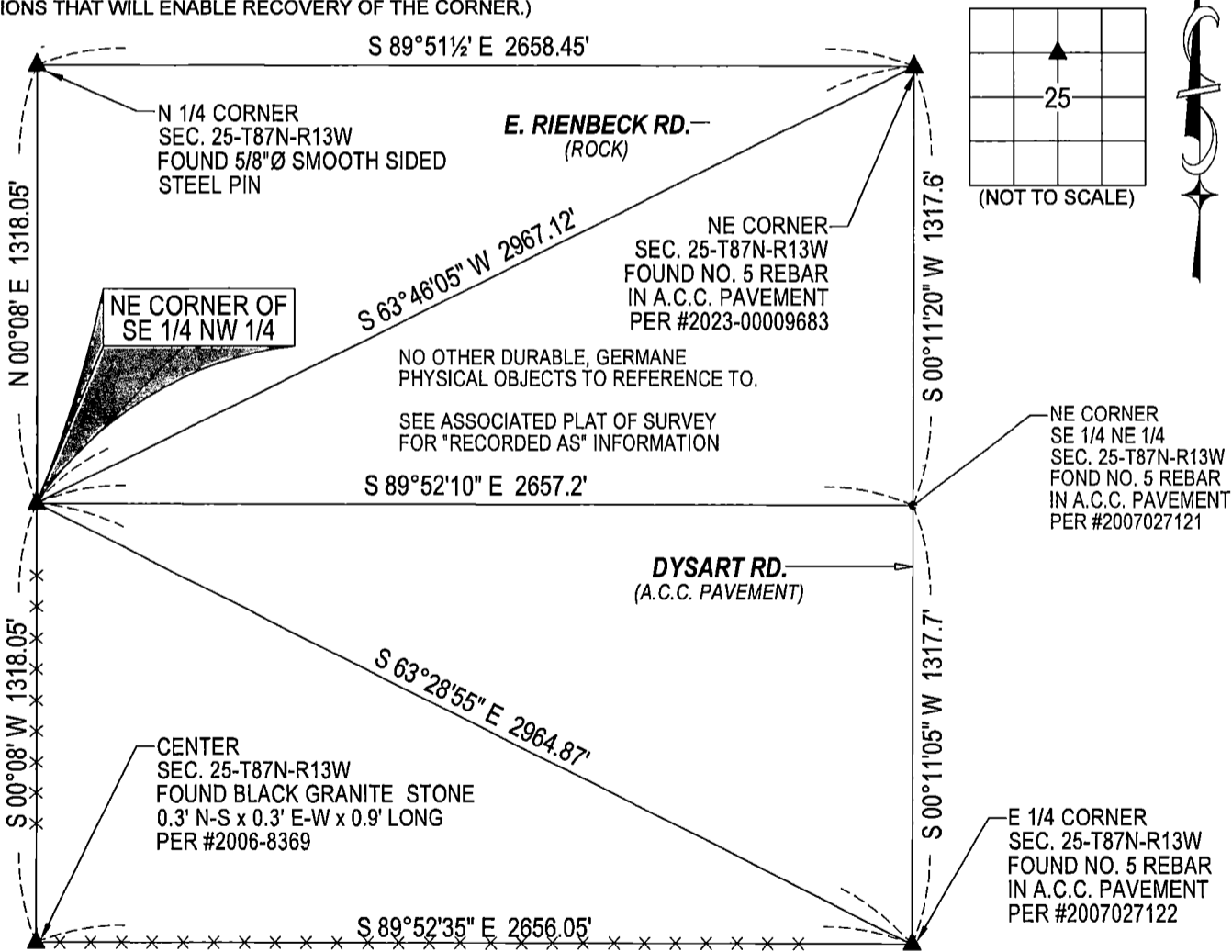
### MONUMENT DESCRIPTION AND REMARKS:

NO USPLSCC ON FILE. SURVEY COMPLETED IN THE NE 1/4 OF SEC. 25-T87N-R13W.

→ **NE CORNER OF THE SE 1/4 NW 1/4:** NO BLACK HAWK COUNTY ENGINEER TIES ARE AVAILABLE NOR ANY OTHER PUBLIC DOCUMENTATION OF THE HISTORY AND PERPETUATION OF CORNER WAS AVAILABLE. SEARCHED AREA WITH MAGNETIC DETECTOR AND PROBED, FOUND SMALL STONES AND P.C.C. CHUNK, NOTHING ELSE FOUND. THEREFORE SET NO. 4 REBAR w/OPC #23212 AT MIDPOINT AND ON LINE BETWEEN THE CENTER AND N 1/4 CORNER OF SECTION 25-T87N-R13W AND UTILIZED AS CORRECT CORNER. NOTE: DRILLED SAID SET NO. 4 REBAR w/OPC #23212 IN SAID P.C.C. CHUNK.

## PLAN VIEW

(SHOW A MINIMUM OF THREE REFERENCE TIES TO DURABLE PHYSICAL OBJECTS, RELEVANT MONUMENTS AND PHYSICAL CONDITIONS THAT WILL ENABLE RECOVERY OF THE CORNER.)



SEE ASSOCIATED PLAT OF SURVEY FOR "RECORDED AS" INFORMATION

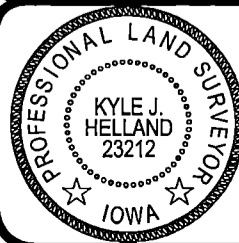
(BEARINGS ARE ASSUMED)



HELLAND ENGINEERING & SURVEYING, LTD.

6109 Chancellor Drive  
Cedar Falls, Iowa 50613-6916  
(319)-266-0161

BRASS TAG = 4d. NAIL & 13/16" Ø BRASS TAG DRAWN BY: CDR SHINER = 1" Ø STEEL SHINER w/MASONRY NAIL  
OPC = PLASTIC CAP (O=ORANGE, R=RED, Y=YELLOW)  
(00') RECORDED AS FILE NAME: 25-222-34.DWG



I hereby certify that this land surveying document was prepared and the related survey work was performed by me or under my direct personal supervision and that I am a duly licensed Professional Land Surveyor under the laws of the State of Iowa.

*Kyle J. Helland* 12/13/2025  
Kyle J. Helland  
License Number 23212  
My license renewal date is December 31, 2025.  
All pages or sheets are covered by this seal except:

### LIST CORNERS TO BE INDEXED

CORNER	SECTION / TOWNSHIP / RANGE
NE COR. SE 1/4 NW 1/4	25 87N 13W
SE COR. NW 1/4 NW 1/4	25 87N 13W
SW COR. NE 1/4 NE 1/4	25 87N 13W
NW COR. SW 1/4 NE 1/4	25 87N 13W