

2025-13757

RECORDED: 09/19/2025 09:37:47 AM

RECORDING FEE: \$7.00

REVENUE TAX: \$

COMBINED FEE: \$7.00

SANDIE L. SMITH, RECORDER  
BLACK HAWK COUNTY, IOWA

PREPARED BY / RETURN TO: JEFFREY R. HUTTON, P.L.S. \* 407 SYCAMORE ST. LA PORTE CITY, IOWA 50651 \* (319)342-4774

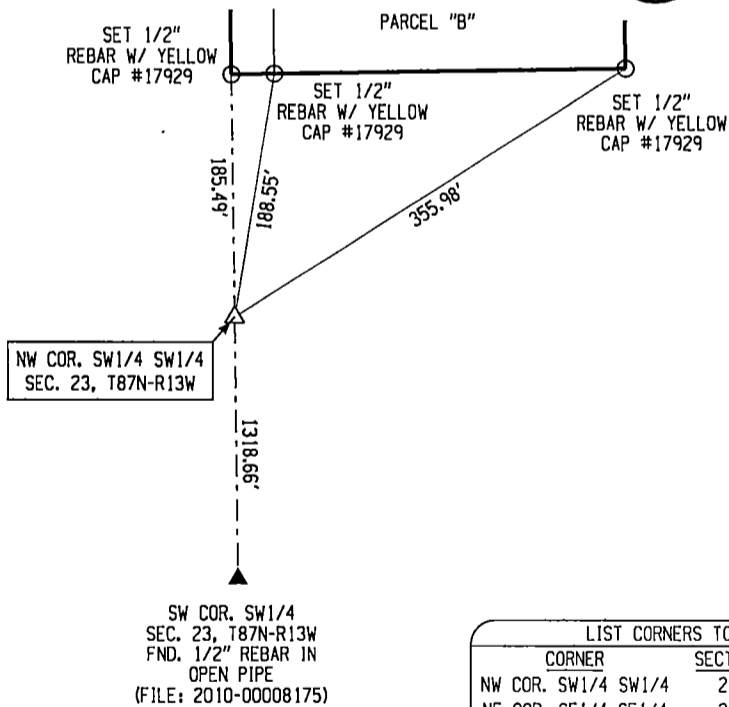
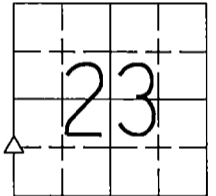
### UNITED STATES PUBLIC LAND SURVEY CORNER CERTIFICATE OF

Land Survey Monuments situated in Section 23, Township 87N, Range 13W of the Fifth Principal Meridian, BLACK HAWK County, Iowa, previously recorded in N/A in County Recorder's Office. (Book, Page, Document Number, etc.)

Monument Description and Remarks:

FOUND NO RESEARCH SUGGESTING MONUMENTATION OF THE NW COR. SW1/4 SW1/4 IN THE OFFICE OF THE BLACK HAWK COUNTY RECORDER; SEARCHED AND FOUND MONUMENTS AT THE SW COR. AND THE W1/4 COR. OF SECTION; SEARCHED APPROXIMATE MIDPOINT OF A LINE BETWEEN SAID CORNERS BUT FOUND NO EVIDENCE OF MONUMENTATION. SET 5/8" REBAR WITH YELLOW CAP #17929 AT SAID MIDPOINT, ACCEPTED AS CORNER, SET TIES AND TIED OUT.

NW COR. SW1/4 SW1/4  
SEC. 23, T87N-R13W  
SET 5/8" REBAR W/ YELLOW CAP #17929



LIST CORNERS TO BE INDEXED			
CORNER	SECTION	TOWNSHIP	RANGE
NW COR. SW1/4 SW1/4	23	87N	13W
NE COR. SE1/4 SE1/4	22	87N	13W



I hereby certify that this land surveying document was prepared and the related survey work was performed by me or under my direct personal supervision and that I am a duly licensed Land Surveyor under the laws of the State of Iowa.

*Jeffrey R. Hutton* 19 Sept 25  
JEFFREY R. HUTTON LICENSE NO. 17929 DATE

My license is subject to renewal on December 31, 2025.  
This certification applies only to the page upon which it appears.

REASON FOR PREPARING CERTIFICATE:

- A) THERE IS NO CERTIFICATE FOR THE CORNER ON FILE WITH THE RECORDER OF THE COUNTY IN WHICH THE CORNER IS LOCATED.
- B) CORNER POSITION DIFFERS FROM THAT SHOWN IN THE PUBLIC RECORDS OF THE COUNTY IN WHICH THE CORNER IS LOCATED.
- C) THE CORNER MONUMENT HAS BEEN REPLACED OR MODIFIED.
- D) THE REFERENCE TIES REFERRED TO IN AN EXISTING PUBLIC RECORD ARE INCORRECT.

LEGEND	SHEET NAME U.S. LAND SURVEY CORNER CERT.		GPS Great Plains Survey, Inc.	407 SYCAMORE ST. LA PORTE CITY, IA 50651 (319)342-4774	
	PROJECT NAME REITER PLAT OF SURVEY				
DATE 03/07/2025	DRAWN BY MJWH	CHECKED BY JRH	APPROVED BY JRH	SCALE NTS	PROJECT No. 251006