

2025-13758

RECORDED: 09/19/2025 09:37:48 AM

RECORDING FEE: \$7.00

REVENUE TAX: \$

COMBINED FEE: \$7.00

SANDIE L. SMITH, RECORDER  
BLACK HAWK COUNTY, IOWA

PREPARED BY / RETURN TO: JEFFREY R. HUTTON, P.L.S. \* 407 SYCAMORE ST. LA PORTE CITY, IOWA 50651 \* (319)342-4774

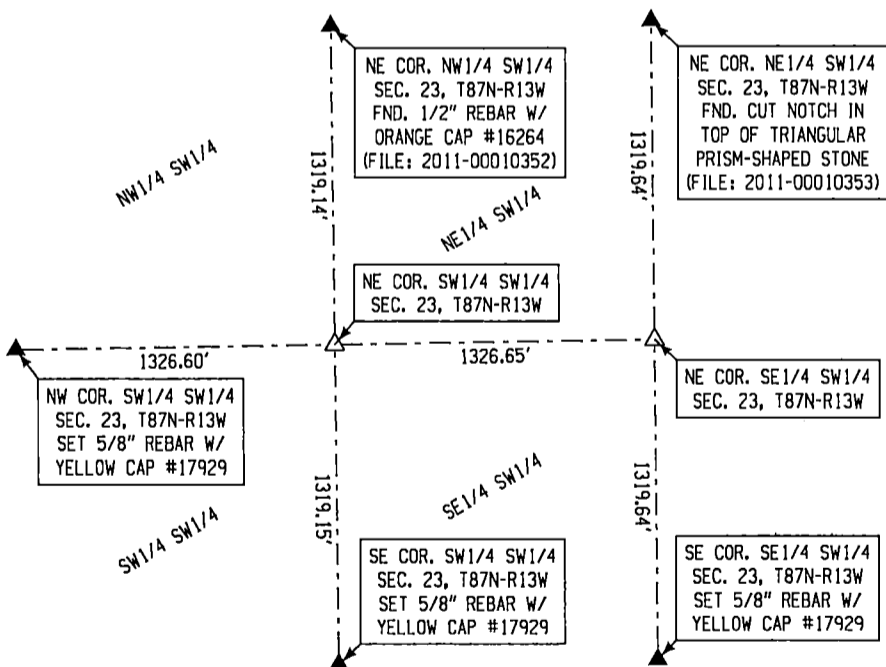
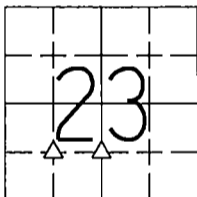
### UNITED STATES PUBLIC LAND SURVEY CORNER CERTIFICATE OF

Land Survey Monuments situated in Section 23, Township 87N, Range 13W of the Fifth Principal Meridian, BLACK HAWK County, Iowa, previously recorded in N/A in County Recorder's Office. (Book, Page, Document Number, etc.)

Monument Description and Remarks:

NE COR. SW1/4 SW1/4: FOUND NO RESEARCH SUGGESTING MONUMENTATION OF SAID CORNER IN THE OFFICE OF THE BLACK HAWK COUNTY RECORDER; SEARCHED THE INTERSECTION OF A LINE BETWEEN THE NE COR. NW1/4 SW1/4 AND SE COR. SW1/4 SW1/4 AND A LINE BETWEEN THE NW COR SW1/4 SW1/4 AND THE MIDPOINT OF A LINE BETWEEN THE NE COR. NE1/4 SW1/4 AND SE COR SE1/4 SW1/4. NOTHING FOUND SET 5/8" REBAR WITH YELLOW CAP #17929 AT SAID INTERSECTION, ACCEPTED AS CORNER, UTILIZED SURROUNDING SECTION CORNERS AS TIES.

NE COR. SE1/4 SW1/4: FOUND NO RESEARCH SUGGESTING MONUMENTATION OF SAID CORNER IN THE OFFICE OF THE BLACK HAWK COUNTY RECORDER; SEARCHED AREA AROUND THE MIDPOINT OF A LINE BETWEEN THE NE COR. SW1/4 AND SE COR. SE1/4 SW1/4 AND FOUND NOTHING. SET 5/8" REBAR WITH YELLOW CAP #17929, ACCEPTED AS CORNER, UTILIZED SURROUNDING SECTION CORNERS AS TIES.



NE COR. SW1/4 SW1/4  
SEC. 23, T87N-R13W  
SET 5/8" REBAR W/ YELLOW CAP #17929  
18" DEEP IN CULTIVATED FIELD

NE COR. SE1/4 SW1/4  
SEC. 23, T87N-R13W  
SET 5/8" REBAR W/ YELLOW CAP #17929  
18" DEEP IN CULTIVATED FIELD

| LIST CORNERS TO BE INDEXED |         |          |       |
|----------------------------|---------|----------|-------|
| CORNER                     | SECTION | TOWNSHIP | RANGE |
| NE COR. SW1/4 SW1/4        | 23      | 87N      | 13W   |
| NE COR. SE1/4 SW1/4        | 23      | 87N      | 13W   |




I hereby certify that this land surveying document was prepared and the related survey work was performed by me or under my direct personal supervision and that I am a duly licensed Land Surveyor under the laws of the State of Iowa.

*Jeffrey R. Hutton* 19 Sept 25  
JEFFREY R. HUTTON LICENSE NO. 17929 DATE

*My license is subject to renewal on December 31, 2025. This certification applies only to the page upon which it appears.*

REASON FOR PREPARING CERTIFICATE:

- A) THERE IS NO CERTIFICATE FOR THE CORNER ON FILE WITH THE RECORDER OF THE COUNTY IN WHICH THE CORNER IS LOCATED.
- B) CORNER POSITION DIFFERS FROM THAT SHOWN IN THE PUBLIC RECORDS OF THE COUNTY IN WHICH THE CORNER IS LOCATED.
- C) THE CORNER MONUMENT HAS BEEN REPLACED OR MODIFIED.
- D) THE REFERENCE TIES REFERRED TO IN AN EXISTING PUBLIC RECORD ARE INCORRECT.

|             |              |                               |             |   |
|-------------|--------------|-------------------------------|-------------|---|
| LEGEND      | SHEET NAME   | U.S. LAND SURVEY CORNER CERT. |             |  407 SYCAMORE ST.<br>LA PORTE CITY, IA 50651<br>(319)342-4774<br>Great Plains Survey, Inc. |
|             | PROJECT NAME | REITER PLAT OF SURVEY         |             |   |
| DATE        | DRAWN BY     | CHECKED BY                    | APPROVED BY | SCALE   |
| 04/02/2025  | MJWH         | JRH                           | JRH         | NTS   |
| PROJECT No. |              |                               |             | 251006  |