

I
P
Z

Document Number: 2007027127
Date: Jun 20, 2007 4:30:00 pm
Aud Fee: 0.00 Rec Fee: 0.00
Trans Tax: 0.00 Rec Management Fee: 0.00
E-Com Fee: 0.00 Non-Standard Page Fee: 0.00
Filed for record in Black Hawk County, Iowa
Judith A. McCarthy, County Recorder

PREPARED BY: BLACK HAWK COUNTY ENGINEERS OFFICE PH.# (319) 833-3008 SLSI 9-94
316 E. FIFTH STREET, ROOM 211 WATERLOO, IOWA 50703 FAX.# (319) 833-3139 CERT 12-96

UNITED STATES PUBLIC LAND SURVEY CORNER CERTIFICATE OF
Land Survey Monuments situated in Section 22, Township 87 N, Range 13 W, of the Fifth Principal Meridian, BLACK HAWK County, Iowa. Previously recorded in Misc. Book 295, Page 280, in County Recorder's Office.

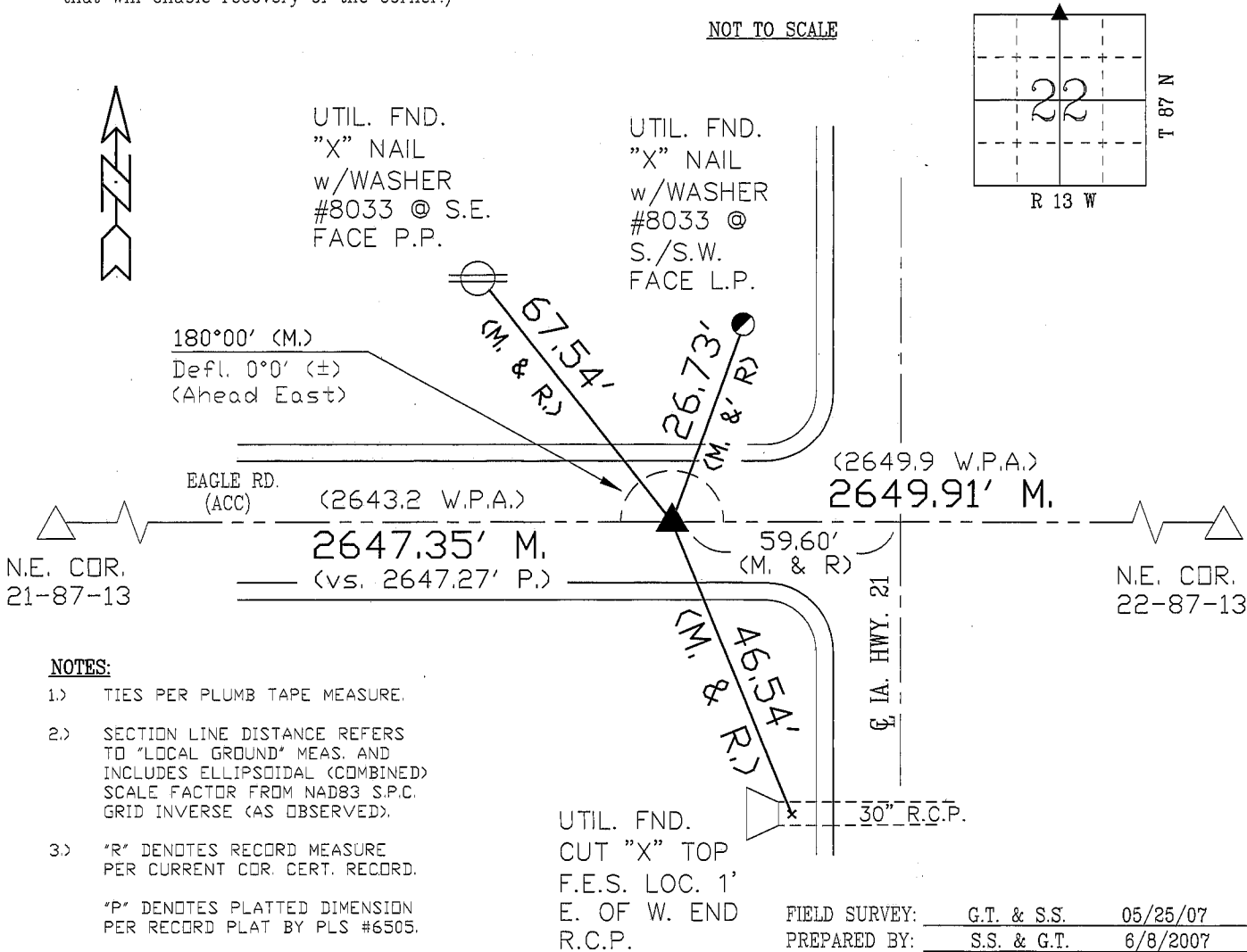
(Show reason for preparing this certificate, the evidence and detailed procedures used in establishing the corner positions and monumentation found or placed.)

Monument Description and Remarks: N. 1/4 CORNER SECT. 22-T87-R13
CUR. REC. PER PLS #8033 CALLED FOR 3/8" REBAR. CORNER NOT FOUND, AND NO SOUNDING / MAG. SIG. WAS OBS. AT RECORD LOCATION WITHIN OPEN ACC HOLE.
RE-EST. w/ #4 RBR. x 10" L. ON 05/01/07, PRIOR TO RESURF. FROM RECORD TIES PER PLS #8033 PROVIDING SOLID RE-ESTABLISHMENT.
UPON COMPLETION OF RESURFACING, RESET #5 REBAR x 6" L., LOC. 0.40' N. OF C.L. ACC JOINT E/W.

PLAN - VIEW

(Show a minimum of three reference ties to durable physical objects, relevant monuments and physical conditions that will enable recovery of the corner.)

NOT TO SCALE



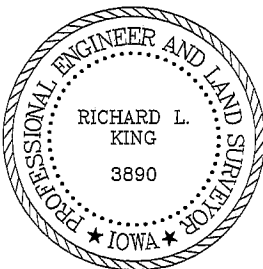
NOTES:

- 1.) TIES PER PLUMB TAPE MEASURE.
 - 2.) SECTION LINE DISTANCE REFERS TO "LOCAL GROUND" MEAS. AND INCLUDES ELLIPSOIDAL (COMBINED) SCALE FACTOR FROM NAD83 S.P.C. GRID INVERSE (AS OBSERVED).
 - 3.) "R" DENOTES RECORD MEASURE PER CURRENT COR. CERT. RECORD.
- "P" DENOTES PLATTED DIMENSION PER RECORD PLAT BY PLS #6505.

UTIL. FND. CUT "X" TOP F.E.S. LOC. 1' E. OF W. END R.C.P.

FIELD SURVEY: G.T. & S.S. 05/25/07
PREPARED BY: S.S. & G.T. 6/8/2007

CERTIFICATION



I hereby certify that this land surveying document was prepared and the related survey work was performed by me or under my direct personal supervision and that I am a duly licensed Land Surveyor under the laws of the State of Iowa.
Richard L. King (signature) 6/19/07 (date)
License Number 3890
My license renewal date is December 31, 2007
Pages or sheets covered by this seal:
This Land Corner Certificate Only.

LIST CORNERS TO BE INDEXED

| Corner | Section | Township | Range |
|-------------|---------|----------|-------|
| N. 1/4 COR. | 22 | 87 N | 13 W |
| S. 1/4 COR. | 15 | 87 N | 13 W |