

SC

Misc

INDEX

MARGIN

PROOF

COMPARE

SOR

BLACK HAWK COUNTY IOWA:SS

FILED FOR RECORD APR 16, 1999 AT

4:00 P. M. AND RECORDED IN BOOK 334

OF Misc

PAGE 11

C. J. S. S. RECORDER

FEE N/C

BLACK HAWK COUNTY ENGINEERS OFFICE

RECEIVED -

RECEIVED - BLACK HAWK CO. ASSESSOR

PREPARED BY: BLACK HAWK COUNTY ENGINEERS OFFICE
316 E. FIFTH STREET, ROOM 211 WATERLOO, IOWA 50703PH# (319) 833-3008
FAX# (319) 833-3139SLSI 9-94
CERT 12-96

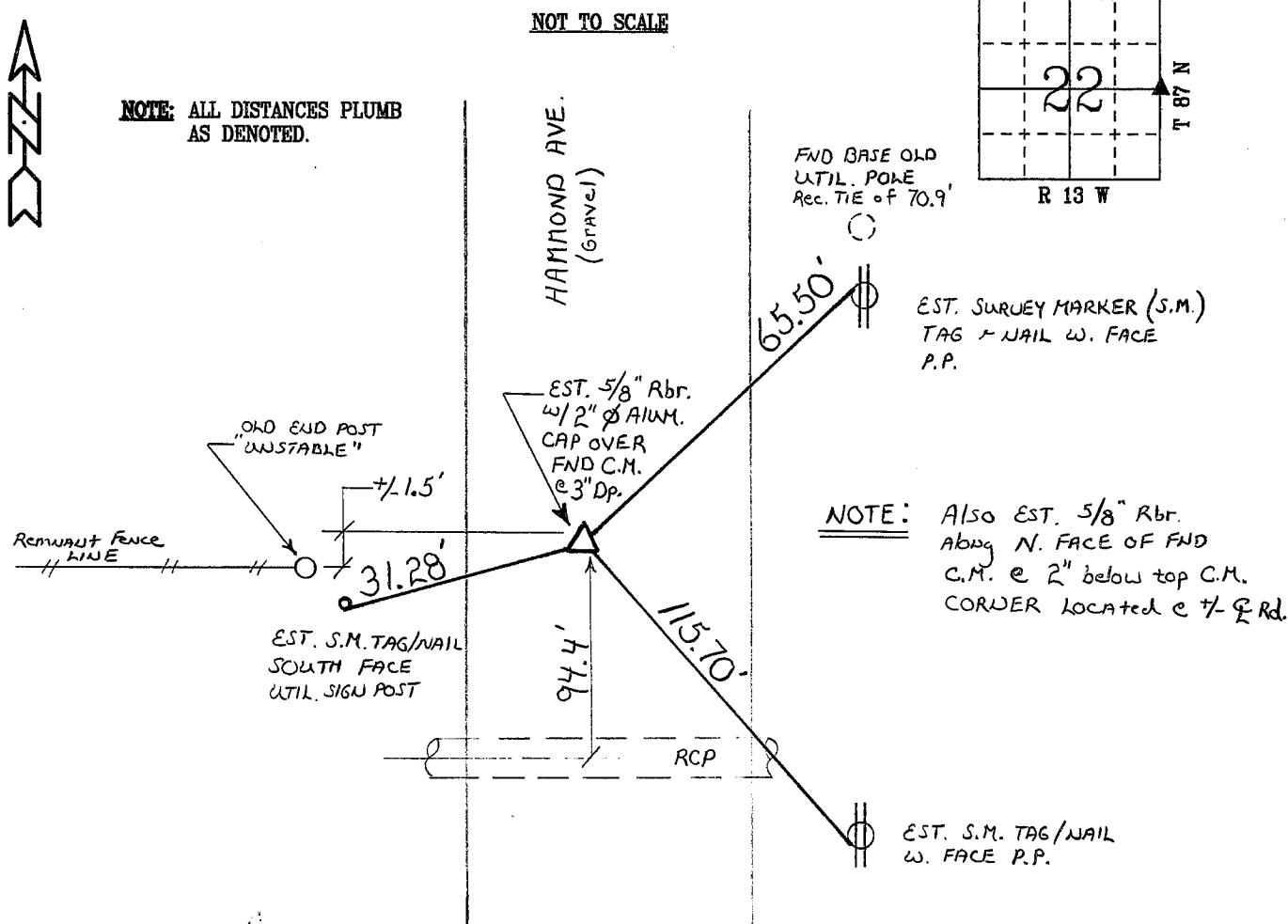
UNITED STATES PUBLIC LAND SURVEY CORNER CERTIFICATE OF
Land Survey Monuments situated in Section 22, Township 87 N,
Range 13 W, of the Fifth Principal Meridian, BLACK HAWK County, Iowa.
Previously recorded in Book N/A, Page N/A, in County Recorder's Office.

(Show reason for preparing this certificate, the evidence and detailed procedures used in establishing the corner positions and monumentation found or placed.)

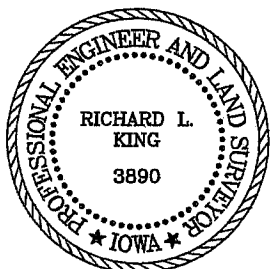
Monument Description and Remarks: FOUND TYP. C.M. (WPA) STAMPED 22+23
LOCATED 32" DEEP FROM REMAINING RECORD CO. TIE TO OLD BASE OF UTIL.
POLE (LOCATED TO N.E.) AND APPROX. RECORD WPA CHAIN TO N.E. CORNER,
BY HELLAND ENGINEERING DISTANCE MEASURE.
MONUMENT TEMP. REF'ED AND EST. 5/8"x28"L RBR. @ TOP C.M. WITH 2" DIA.
ALUM. CAP LOC. 3" DEEP, AND RE-TIED AS DENOTED.

PLAN - VIEW

(Show a minimum of three reference ties to durable physical objects, relevant monuments and physical conditions that will enable recovery of the corner.)

FIELD SURVEY: G. TINKER, C.W., & HELLAND ENG.
PREPARED BY: G. TINKER 4/99

CERTIFICATION



I hereby certify that this land surveying document was prepared and the related survey work was performed by me or under my direct personal supervision and that I am a duly licensed Land Surveyor under the laws of the State of Iowa.

Richard L. King 4/15/99
Richard L. King (date)

License Number 3890

My license renewal date is December 31, 1999

Pages or sheets covered by this seal:

This Land Corner Certificate Only.

LIST CORNERS TO BE INDEXED

Corner Section - Township - Range

E. 1/4 22 87 N 13 W