

SC
Misc
PROJ
COMP

BLACK HAWK COUNTY IOWA:SS
FILED FOR RECORD Dec 15 1997 AT
4:00 P.M., AND RECORDED IN BOOK 312
OF Misc PAGE 513
RECORDED
FEE 1-5.00/
PAUL HELLAND

11001

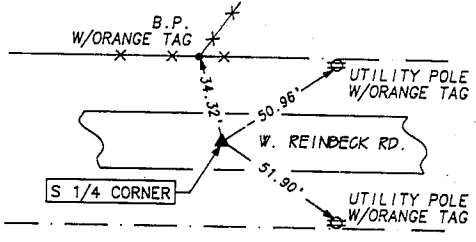
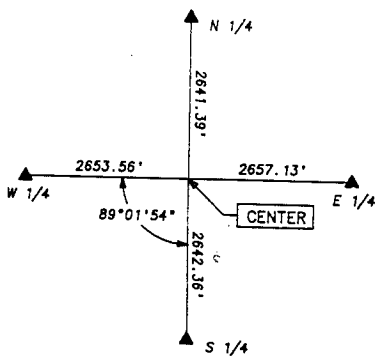
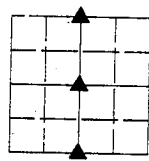
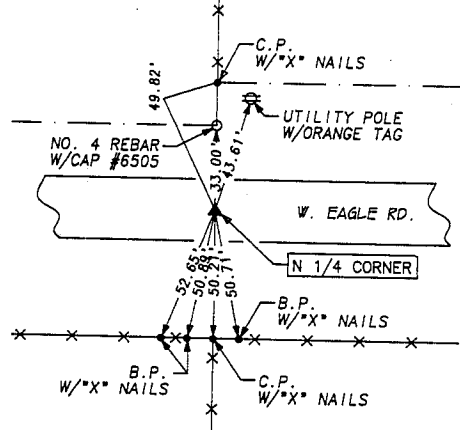
PAUL H. HELLAND, 1107 TECHNOLOGY PARKWAY, CEDAR FALLS, IOWA 50613, (319)-266-0161

UNITED STATES PUBLIC LAND SURVEY CORNER CERTIFICATE
OF

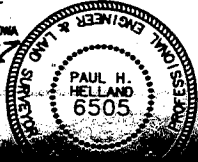
LAND SURVEY MONUMENTS SITUATED IN SECTION NO. 20, TOWNSHIP NO. 87N, RANGE
NO. 13W, OF THE FIFTH PRINCIPAL MERIDIAN, BLACK HAWK COUNTY, IOWA.
PREVIOUSLY RECORDED IN BOOK, PAGE.
(SHOW REASON FOR PREPARING THIS CERTIFICATED, THE EVIDENCE AND DETAILED PROCEDURES USED IN ESTABLISHING THE CORNER POSITIONS
AND MONUMENTATION FOUND OR PLACED.)
MONUMENT DESCRIPTION AND REMARKS:
SURVEY DONE IN W 1/2 SEC. 20-87-13
N 1/4 CORNER - FOUND 1/2" PIN IN A.C.C. PAVEMENT
S 1/4 CORNER - FOUND NO. 4 REBAR W/CAP #6505
CENTER - SET MAG NAIL IN TOP OF CORNER POST AT INTERSECTION OF LINES BETWEEN 1/4 CORNERS

PLAN VIEW

(SHOW A MINIMUM OF THREE REFERENCE TIES TO DURABLE PHYSICAL OBJECTS, RELEVANT MONUMENTS AND PHYSICAL CONDITIONS THAT WILL
ENABLE RECOVERY OF THE CORNER.)



I HEREBY CERTIFY THAT THIS PLAT, MAP, SURVEY OR REPORT WAS MADE
BY ME OR UNDER MY DIRECT PERSONAL SUPERVISION AND THAT I AM A
DULY REGISTERED LAND SURVEYOR UNDER THE LAWS OF THE STATE OF IOWA
DATE 12/15/97
PAUL H. HELLAND, P.E. & R.L.S. IOWA REGISTRATION NO. 6505
MY REGISTRATION EXPIRES DECEMBER 31, 1997
HELLAND ENGINEERING
& SURVEYING, LTD., A



LIST CORNERS TO BE INDEXED			
CORNER	SECTION	TOWNSHIP	RANGE
N 1/4	20	87N	13W
CENTER	20	87N	13W