

PREPARED BY: \*BLACK HAWK COUNTY ENGINEERS OFFICE  
316 E. FIFTH STREET, ROOM 211 WATERLOO, IOWA 50703

PH.# (319) 833-3008  
FAX.# (319) 833-3139  
SLSI 9-94  
BHCO 03-09

UNITED STATES PUBLIC LAND SURVEY CORNER CERTIFICATE OF  
Land Survey Monuments situated in Section 19, Township 87 N, Range 13 W, of the Fifth Principal Meridian, BLACK HAWK County, Iowa.  
Previously recorded in Misc Book N/A, Page N/A, in County Recorder's Office.  
(Show reason for preparing this certificate): There is No Certificate for the corner on file with County Recorder, per Ia. Code 355.11(1)(a).

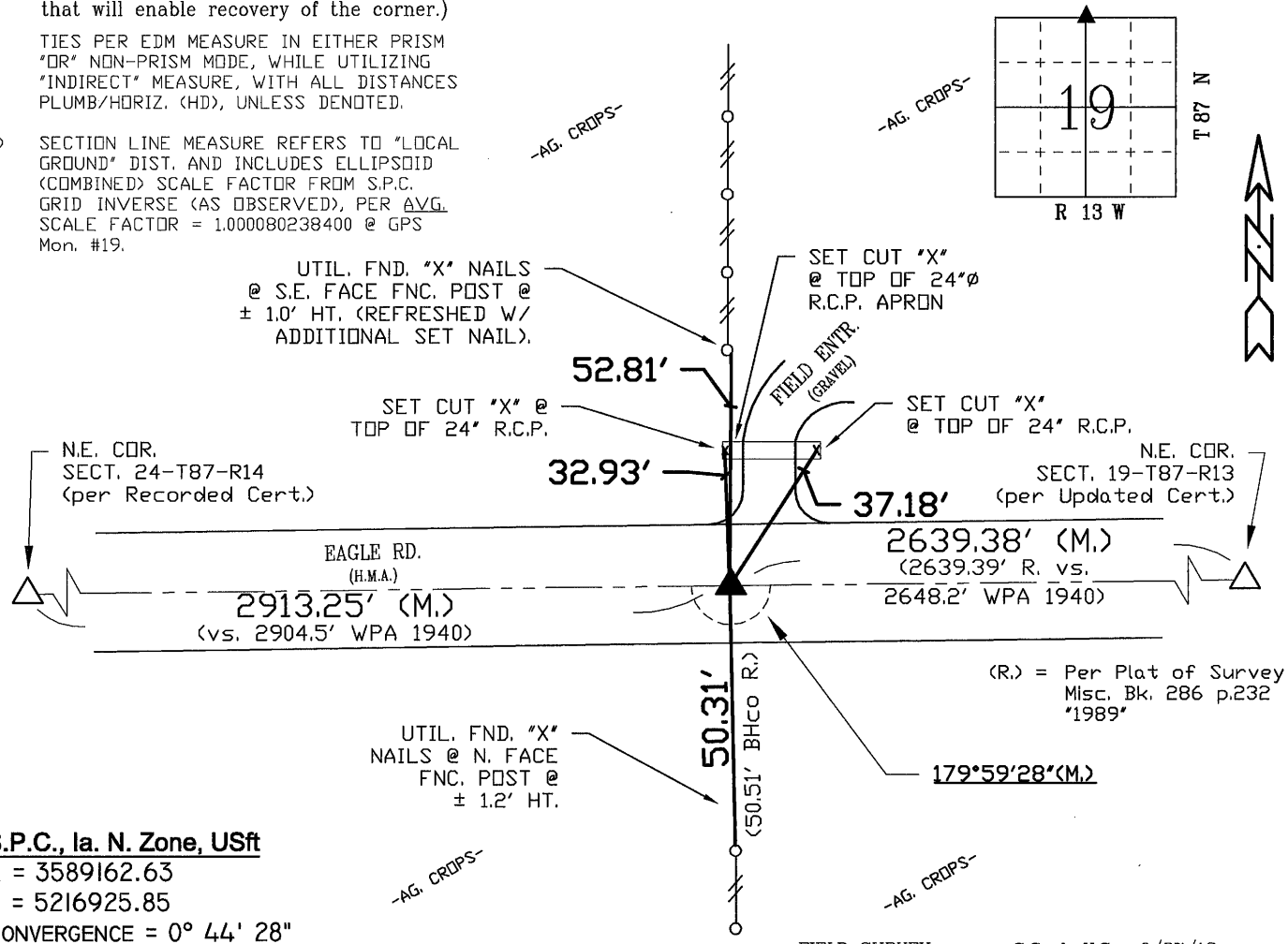
(Evidence and detailed procedures used in establishing the corner position(s) and monumentation found or placed.)  
Monument Description and Remarks: N. 1/4 CORNER.  
CORNER RESET FOR COLD-IN-PLACE RECYCLE & H.M.A. RESURF. PROJECT LFM-503--7X-07. PRIOR TO RESURF. PROJECT, FOUND 3/8" PIN AND TEMP. REF. COR. LOCATION PER RTK GPS. AFTER 4" DEEP MILL & RECYCLE COURSE, NO SOUNDING REMAINED & NO EXCAVATION DONE @ LOCATION. AFTER +3" H.M.A. RESURF. COURSE, RESET CORNER WITH 5/8" (#5) x ±8'L REBAR LOCATED @ ±0.4' NORTH OF H.M.A. JOINT AND ALIGNED ± w/ REMNANT FENCE LINE TO SOUTH AND ALIGNED ±0.5' EAST OF FENCE LINE TO NORTH. WHILE OVERALL DISTANCE OF NORTH LINE SAID SECTION IS NEAR MATCH WITH 1940 WPA, THE DIFFERENCES TO N. 1/4 COR. WOULD SUGGEST CORNER IS ±8.8' WEST FROM MONUMENT FOUND. ADDITIONAL PLAT OF SURVEY PER MISC. 286 p.232 FURTHER SUPPORTS N. LINE OF N.E. 1/4 AS OBSERVED.

PLAN VIEW  
"NOT TO SCALE"

BHco Hist. Ties: BK. #1000 p. 19 T87-R13  
FIELD BOOK: Ties per Topcon 7003i #Z0115

(Show a minimum of three reference ties to durable physical objects, relevant monuments and physical conditions that will enable recovery of the corner.)

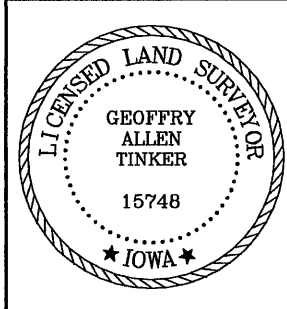
- 1.) TIES PER EDM MEASURE IN EITHER PRISM "OR" NON-PRISM MODE, WHILE UTILIZING "INDIRECT" MEASURE, WITH ALL DISTANCES PLUMB/HORIZ. (HD), UNLESS DENOTED.
- 2.) SECTION LINE MEASURE REFERS TO "LOCAL GROUND" DIST. AND INCLUDES ELLIPSOID (COMBINED) SCALE FACTOR FROM S.P.C. GRID INVERSE (AS OBSERVED), PER AVG. SCALE FACTOR = 1.000080238400 @ GPS Mon. #19.



S.P.C., Ia. N. Zone, USft  
N = 3589162.63  
E = 5216925.85  
CONVERGENCE = 0° 44' 28"  
(NAD83-NSRS2007 "BHco07", RTK OBS.)

FIELD SURVEY: S.S. & V.S. 6/27/12  
PREPARED BY: S.S. & G.T. 12/4/12

CERTIFICATION



I hereby certify that this land surveying document was prepared and the related survey work was performed by me or under my direct personal supervision and that I am a duly licensed Land Surveyor under the laws of the State of Iowa.  
*Geoffrey C. Tinker* 12/04/2012  
Geoffrey Allen Tinker (date)  
License Number 15748  
My license renewal date is December 31, 2012  
Pages or sheets covered by this seal:  
This Land Corner Certificate Only.

LIST CORNERS TO BE INDEXED

Corner	Section	Township	Range
N. 1/4 Cor.	19	87 N	13 W
S. 1/4 Cor.	18	87 N	13 W

INDEX OF ABBREVIATIONS

(M) = "Measured" Dimension  
(P) = "Platted" Dimension  
(R) = "Record" Dimension  
(C) = "Calculated" Dimension  
"IGS" = Iowa Geodetic Survey  
"WPA" = Works Progress Admin. Survey  
"G" = per George Miller Survey (BHco Surveyor 1858-1860)  
"B" = per John Ball Survey (BHco Surveyor 1866-1891)  
"N" = per Nathan Barber Survey (BHco Surveyor 1908-1931)  
"NP" = Reflectorless EDM Meas.  
"MLM" = Indirect Measure  
"CM" = Concrete Monument  
"SM" = Survey Marker Spike/Tag  
"PK" = PK/MAG Nail Brand Style