

I
P
Z

Document Number: 2007026199
Date: Jun 08, 2007 4:30:00 pm
Aud Fee: 0.00 Rec Fee: 0.00
Trans Tax: 0.00 Rec Management Fee: 0.00
E-Com Fee: 0.00 Non-Standard Page Fee: 0.00
Filed for record in Black Hawk County, Iowa
Judith A. McCarthy, County Recorder

PREPARED BY: BLACK HAWK COUNTY ENGINEERS OFFICE PH.# (319) 833-3008 SLSI 9-94
316 E. FIFTH STREET, ROOM 211 WATERLOO, IOWA 50703 FAX.# (319) 833-3139 CERT 12-96

UNITED STATES PUBLIC LAND SURVEY CORNER CERTIFICATE OF
Land Survey Monuments situated in Section 17, Township 87 N, Range 13 W, of the Fifth Principal Meridian, BLACK HAWK County, Iowa. Previously recorded in Misc. Book n/a, Page n/a, in County Recorder's Office.

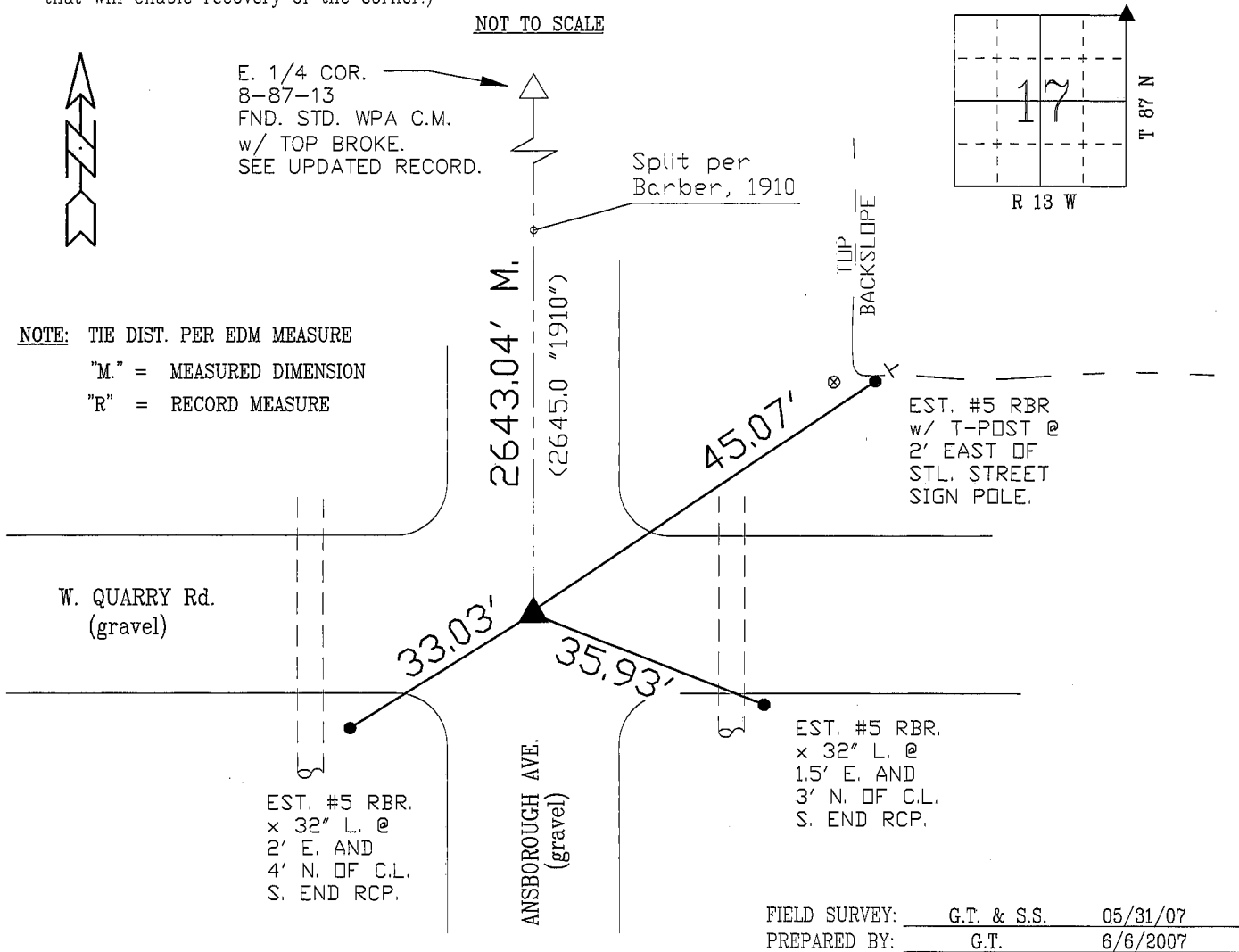
(Show reason for preparing this certificate, the evidence and detailed procedures used in establishing the corner positions and monumentation found or placed.)

Monument Description and Remarks: FND. 3/4" PINCHED PIPE @ CENTERLINE INTERSECTION GRAVEL ROADS, LOCATED 2" DEEP. CORNER RECOVERED FOR SECTION LINE AND R.O.W. NEEDS FOR PROPOSED BR. REPLACEMENT NORTH OF CORNER. HISTORICAL TIES AT CORNER DESTROYED, AND CORNER FILED TO UPDATE RECORD. REFER TO "BARBER SURVEY" DATED MAY 6th, 1910 FOR HISTORICAL MEASURE OF SECTION CORNER, FROM SURVEY OF S.E. 1/4 SECT. 8-87-13.

PLAN - VIEW

(Show a minimum of three reference ties to durable physical objects, relevant monuments and physical conditions that will enable recovery of the corner.)

NOT TO SCALE



CERTIFICATION



I hereby certify that this land surveying document was prepared and the related survey work was performed by me or under my direct personal supervision and that I am a duly licensed Land Surveyor under the laws of the State of Iowa.
Geoffrey Allen Tinker 06/06/07
Geoffrey Allen Tinker (date)
License Number 15748
My license renewal date is December 31, 2008
Pages or sheets covered by this seal:
This Land Corner Certificate Only.

LIST CORNERS TO BE INDEXED

Corner	Section	Township	Range
N.E. COR.	17	87 N	13 W
S.E. COR.	8	87 N	13 W
N.W. COR.	16	87 N	13 W
S.W. COR.	9	87 N	13 W