

INDEX

BLACK HAWK COUNTY, IOWA:SS

FEE BOOK # 20 05 10195

PROOF

FILED FOR RECORD OCT 21, 2004, AT 11:00 A. M. FEE 1-5.00/- 1.00/

COMPARED

David L. Scheil

BLACK HAWK COUNTY RECORDER

WAYNE CLAASSEN ENGINEERING AND SURVEYING, INC.
P.O. BOX 898 WATERLOO, IOWA 50704-0898ENV WAYNE CLAASSEN ENGINEERING AND SURVEYING
PHONE: (VOICE) 319-235-6294
(FAX) 319-235-0028

UNITED STATES PUBLIC LAND SURVEY CORNER CERTIFICATE

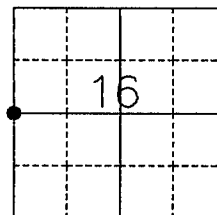
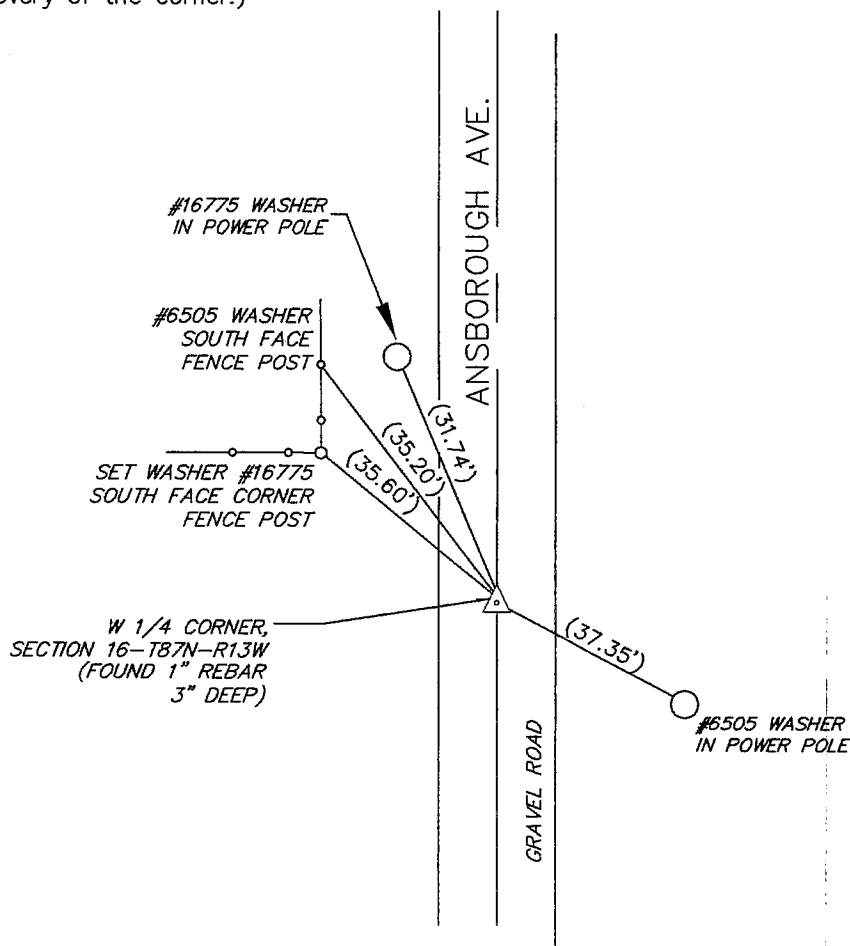
Land Survey Monuments situated in Section 16, Township 87 North, Range 13 West, of the Fifth Principal Meridian, Black Hawk County, Iowa.Previously recorded in Book 304, Page 605 in County Recorder's Office.
(book, page, document number, etc.)

(Show reason for preparing this certificate, the evidence and detailed procedures used in establishing the corner positions and monumentation found or placed.)

Monument Description and Remarks Some accessories ties were gone. Therefore, added some new ties.

PLAN - VIEW

(Show a minimum of three reference ties to durable physical objects, relevant monuments and physical conditions that will enable recovery of the corner.)

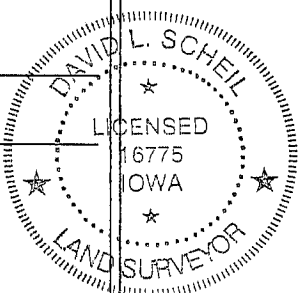


I hereby certify that the survey work was completed and this certificate was prepared by me or under my direct personal supervision and that I am a duly licensed land surveyor under the laws of the state of Iowa.

Signature: *David L. Scheil*
David L. Scheil, L.S.Date: OCT 20, 2004 Lic. No. 16775

My license renewal date is December 31, 2004

SEAL



List Corners to be Indexed

Corners	Section	Twp	Range
W 1/4 CORNER,	16	87 N	13 W