

U.S. (IA.) PUBLIC LAND SURVEY  
CORNER CERTIFICATE (Ia. 355.11)

**B.H. Co. PROJECT: FM-C007(139)--55-07**  
KIMBALL AVE. (V27) RESURFACING PROJECT (2016)  
COLD IN-PLACE RECYCLING w/H.M.A. RESURFACING



Doc ID: 007510480002 Type: GEN  
Recorded: 12/12/2016 at 03:49:40 PM  
Fee Amt: \$0.00 Page 1 of 2  
Black Hawk County Iowa  
SANDIE L. SMITH RECORDER

File **2017-00010909**

## INDEX OF ABBREVIATIONS

(M) = "Measured" Dimension	"NP" = Reflectorless EDM Meas
(P) = "Platted" Dimension	"MLM" = Indirect Measure
(R) = "Record" Dimension	"CM" = Concrete Monument
(C) = "Calculated" Dimension	"SM" = Survey Marker Spike/Tag
"IGS" = Iowa Geodetic Survey	"PK" = PK/MAG Nail Brand Style
"WPA" = Works Progress Admin. Surveys (late 1930's to early 1940's)	
"G" = per George Miller Survey (BHco Surveyor 1858-1860)	
"B" = per John Ball Survey (BHco Surveyor 1866-1891)	
"N" = per Nathan Barber Survey (BHco Surveyor 1908-1931)	

Land Survey Monument(s) situated in Section 16, Township 87 N., Range 13 W., of the Fifth Principal Meridian (5th P.M.), BLACK HAWK County, Iowa. Previously recorded in File (Fee) Book 2005, Page 10193, in County Recorder's Office. (Show reason for preparing this certificate): The corner monument has been Replaced or Modified, per Ia. Code 355.11(1)(c)

(Evidence and detailed procedures used in establishing the corner position(s) and monumentation found or placed.)

Monument Description and Remarks: N.E. COR.

CORNER ALSO PREVIOUSLY RECORDED IN MISC. BOOK 295 p.276 DTD. 03-28-1991 PER PLS  
#8033 AS A FOUND 1"Ø REBAR. CORNER RESET & TIES UPDATED PER COLD-IN-PLACE  
RECYCLING & H.M.A. RESURF. PROJECT FM-C007(139)--55-07. PRIOR TO RESURF. PROJECT,  
FOUND 1"Ø IRON PIN PER CURRENT COR. CERT. & TEMP. REF. COR. LOC. PER RTK GPS (IaRTN).  
AFTER 3" DP. MILL (RECYCLE), NO SOUNDING REMAINED @ ±RTK REFERENCED LOCATION w/ NO  
FURTHER EXCAVATION. PVMT. RESURFACED w/ +3" (1.5" INT. & 1.5" SURF.) H.M.A. PAVING.  
AFTER H.M.A. RESURFACE, RESET CORNER WITH 6" L. MAG SPIKE w/ MTL. WASHER (PLS #15748)  
@ ±2.65' WEST OF H.M.A. JOINT AND ALIGNED ± w/ CENTERLINE OF QUARRY ROAD TO EAST  
AND WEST. NOTE SECTION LINE DOES "NOT" EQUAL CENTERLINE OF RD. IN AREA, PER p.#2.

Software: TopSurv v.8.2.3 w/FC-2500

Project Point ID: 1011

## PLAN VIEW

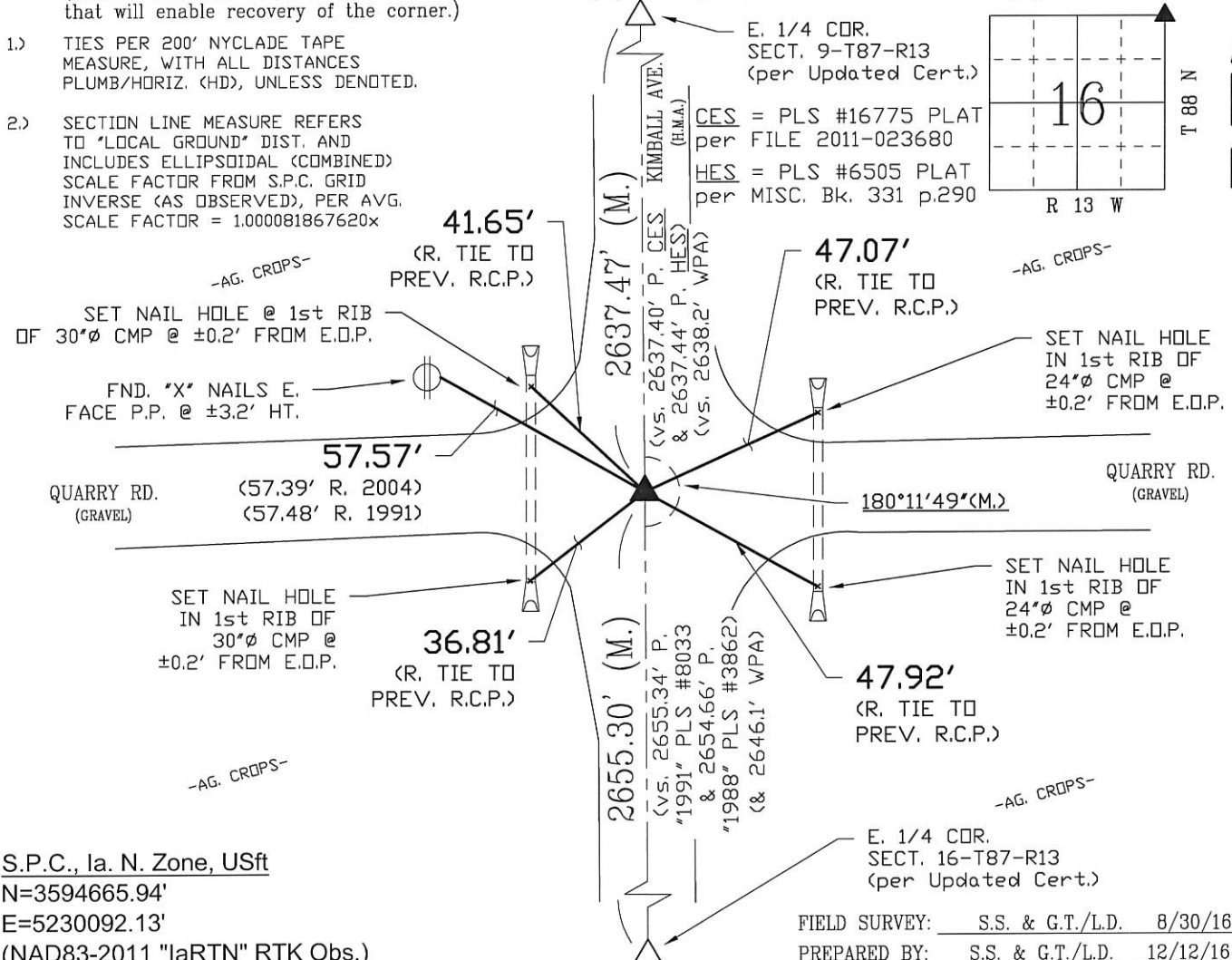
"NOT TO SCALE"

BHco Hist. Ties: BK. #1000 p.16 87-13

FIELD BOOK: (n/a), per Draft Cert. (S.S.)

(Show a minimum of three reference ties to durable physical objects, relevant monuments and physical conditions that will enable recovery of the corner.)

- 1.) TIES PER 200' NYCLADE TAPE  
MEASURE, WITH ALL DISTANCES  
PLUMB/HORIZ. (HD), UNLESS DENOTED.
- 2.) SECTION LINE MEASURE REFERS  
TO 'LOCAL GROUND' DIST. AND  
INCLUDES ELLIPSOIDAL (COMBINED)  
SCALE FACTOR FROM S.P.C. GRID  
INVERSE (AS OBSERVED), PER AVG.  
SCALE FACTOR = 1.000081867620x



S.P.C., Ia. N. Zone, USft

N=3594665.94'

E=5230092.13'

(NAD83-2011 "laRTN" RTK Obs.)

FIELD SURVEY: S.S. & G.T./L.D. 8/30/16

PREPARED BY: S.S. & G.T./L.D. 12/12/16

## CERTIFICATION

---

*Page #1 of 2*



I hereby certify that this land surveying document was prepared and the related survey work was performed by me or under my direct personal supervision and that I am a duly licensed Land Surveyor under the laws of the State of Iowa.

Geoffry Allen Tinker 12/12/2016  
(date)

License Number 15748

My license renewal date is December 31, 2016

Pages or sheets covered by this seal:

This Land Corner Certificate Only, 2pp.

## LIST CORNERS TO BE INDEXED

<u>Corner</u>	<u>Section -</u>	<u>Township -</u>	<u>Range</u>
N.E. Cor.	16	87 N.	13 W.
N.W. Cor.	15	87 N.	13 W.
S.E. Cor.	09	87 N.	13 W.
S.W. Cor.	10	87 N.	13 W.



**PREPARED BY:**

**BLACK HAWK COUNTY  
ENGINEER'S DEPT.  
316 E. FIFTH ST., RM. 211  
WATERLOO, IA. 50703  
PH. 319-833-3008  
FAX. 319-833-3139**

surveyor@co.black-hawk.ia.us

U.S. (IA.) PUBLIC LAND SURVEY

CORNER CERTIFICATE (Ia. 355.11)

B.H. Co. PROJECT: FM-C007(139)--55-07

KIMBALL AVE. (V27) RESURFACING PROJECT (2016)

COLD IN-PLACE RECYCLING w/ HMA RESURFACING



PREPARED BY:

BLACK HAWK COUNTY

ENGINEER'S DEPT.

316 E. FIFTH ST. RM. 211

WATERLOO, IA. 50703

PH. 319-833-3008

FAX. 319-833-3139

surveyor@co.black-hawk.ia.us

INDEX OF ABBREVIATIONS	
(M) = "Measured" Dimension	"NP" = Reflectorless EDM Meas
(P) = "Platted" Dimension	"MLM" = Indirect Measure
(R) = "Record" Dimension	"CM" = Concrete Monument
(C) = "Calculated" Dimension	"SM" = Survey Marker Spike/Tag
"IGS" = Iowa Geodetic Survey	"PK" = PK/MAG Nail Brand Style
"WPA" = Works Progress Admin. Surveys (late 1930's to early 1940's)	
"G" = per George Miller Survey (BHco Surveyor 1858-1860)	
"B" = per John Ball Survey (BHco Surveyor 1866-1891)	
"N" = per Nathan Barber Survey (BHco Surveyor 1908-1931)	

FIELD SURVEY: S.S. & G.T./L.D. 8/30/16

PREPARED BY: S.S. & G.T./L.D. 12/12/16

Land Survey Monument(s) situated in Section 16, Township 87 N., Range 13 W., of the Fifth Principal Meridian (5th P.M.), BLACK HAWK County, Iowa.

Previously recorded in File (Fee) Book 2005, Page 10193, in County Recorder's Office.

(Show reason for preparing this certificate): The corner monument has been Replaced or Modified, per Ia. Code 355.11(1)(c)

(Evidence and detailed procedures used in establishing the corner position(s) and monumentation found or placed.)

Monument Description and Remarks: N.E. COR. AND C.L. P.I. GEOMETRICS

REFERENCES TO P.I. GEOM. PROVIDED FOR AS CONSTRUCTED (AS-BUILT) DETAILS RELATIVE TO LAND CORNER TIE DETAILS PROVIDED ON p.#1. NO HISTORICAL GEOMETRICS WERE FOUND THAT DEFINED EXISTING CENTERLINE OF KIMBALL AVE. DEFLECTING THROUGH INTERSECTION AND TO SOUTH (APPARENT TWIN 12'x8' RCB REPL. PROJECT IN 1989) RELATIVE TO SECTION LINE. CONSTRUCTED BEST FIT EDGE LINES OF PREV. A.C.C. PAVEMENT (PRIOR TO H.M.A. RESURF.) AND DEFINED C.L. GEOMERICS AS ESTABLISHED PER P.I. DETAILS.

Software: TopSurv v.8.2.3 w/FC-2500

Project Point ID: 1011

PLAN VIEW

"NOT TO SCALE"

BHco Hist. Ties: BK. #1000 p.16 87-13

FIELD BOOK: Civ3D Proj. "2016-LandCorners"

(Show a minimum of three reference ties to durable physical objects, relevant monuments and physical conditions that will enable recovery of the corner.)

- 1.) P.I. GEOM. PER "BEST FIT" OF EXISTING A.C.C. PAVEMENT PRIOR TO H.M.A. RESURFACING PROJECT.
- 2.) SECTION LINE MEASURE REFERS TO "LOCAL GROUND" DIST. AND INCLUDES ELLIPSOIDAL (COMBINED) SCALE FACTOR FROM S.P.C. GRID INVERSE (AS OBSERVED), PER AVG. SCALE FACTOR = 1.000081867620x
- 3.) P.I. DETAILS PROVIDED WITH LAND CORNER CERT. FOR GEOM. (C.L. H.M.A. PAVEMENT) REFERENCES AS CONSTRUCTED.

-AG. CROPS-

P.I. (N.):  
S.P.C., Ia. N. Zone, USft  
N=3594765.95'  
E=5230093.35'  
(NAD83-2011 "IaRTN" RTK Obs.)

P.I. (S):  
S.P.C., Ia. N. Zone, USft  
N=3594505.97'  
E=5230096.98'  
(NAD83-2011 "IaRTN" RTK Obs.)  
Delta: 0°39'25"  
Radius: 30,519.26'  
Tangent: 175.00'  
Arc Length: 350.00'  
Chord: 350.00'

