

U.S. (IA.) PUBLIC LAND SURVEY  
CORNER CERTIFICATE (Ia. 355.11)

B.H. Co. PROJECT: FM-C007(139)--55-07

KIMBALL AVE. (V27) RESURFACING PROJECT (2016)

COLD IN-PLACE RECYCLING w/ H.M.A. RESURFACING

## INDEX OF ABBREVIATIONS

(M) = "Measured" Dimension                      "NP" = Reflectorless EDM Meas  
(P) = "Platted" Dimension                    "MLM" = Indirect Measure  
(R) = "Record" Dimension                  "CM" = Concrete Monument  
(C) = "Calculated" Dimension             "SM" = Survey Marker Spike/Tag  
"IGS" = Iowa Geodetic Survey            "PK" = PK/MAG Nail Brand Style  
"WFA" = Works Progress Admin. Surveys (late 1930's to early 1940's)  
"G" = per George Miller Survey (BHco Surveyor 1858-1860)  
"B" = per John Ball Survey (BHco Surveyor 1866-1891)  
"N" = per Nathan Barber Survey (BHco Surveyor 1908-1931)



Doc ID: 007510460001 Type: GEN  
Recorded: 12/12/2016 at 03:48:27 PM  
Fee Amt: \$0.00 Page 1 of 1  
Black Hawk County Iowa  
SANDIE L. SMITH RECORDER

File 2017-00010907

Land Survey Monument(s) situated in Section 16, Township 87 N., Range 13 W., of the Fifth Principal Meridian (5th P.M.), BLACK HAWK County, Iowa.

Previously recorded in File Book N/A, Page N/A, in County Recorder's Office.

(Show reason for preparing this certificate): There is No Certificate for the corner on file with County Recorder, per Ia. Code 355.11(1)(a).

(Evidence and detailed procedures used in establishing the corner position(s) and monumentation found or placed.)

Monument Description and Remarks: N. 1/6th COR., EAST

CORNER ESTABLISHED AT EQUAL SPLIT OF EAST LINE N.E.1/4 OF SAID SECTION, TO EQUAL P.I. DEFLECTION OF EXSTING (±) CENTERLINE PAVEMENT GEOMETRY, WITH NO HISTORICAL REF. OF PREV. 1/4-1/4 CORNER (1/16th CORNER). W.P.A. RANDOM LINE MEASURE (LATE 30's / EARLY 40's) CALLS FOR EXIST. FENCE TO WEST AT 1326.0' SOUTH OF N.E. COR. & 1320.1' NORTH OF E. 1/4 CORNER. CORNER & TIES ESTABLISHED FOR COLD-IN-PLACE RECYCLING & H.M.A. RESURF. PROJECT FM-C007(139--55-07. AFTER RESURFACING, SET CORNER (=P.I.) WITH 6"L. MAG SPIKE w/MTL. WASHER (PLS #15748) @ ±C.L. H.M.A. JOINT, AND ALIGNED (WITHIN ±1') WITH EXISTING REMNANT FENCE LINE TO WEST.

Software: TopSurv v.8.2.3 w/FC-2500

Project Point ID: 1018

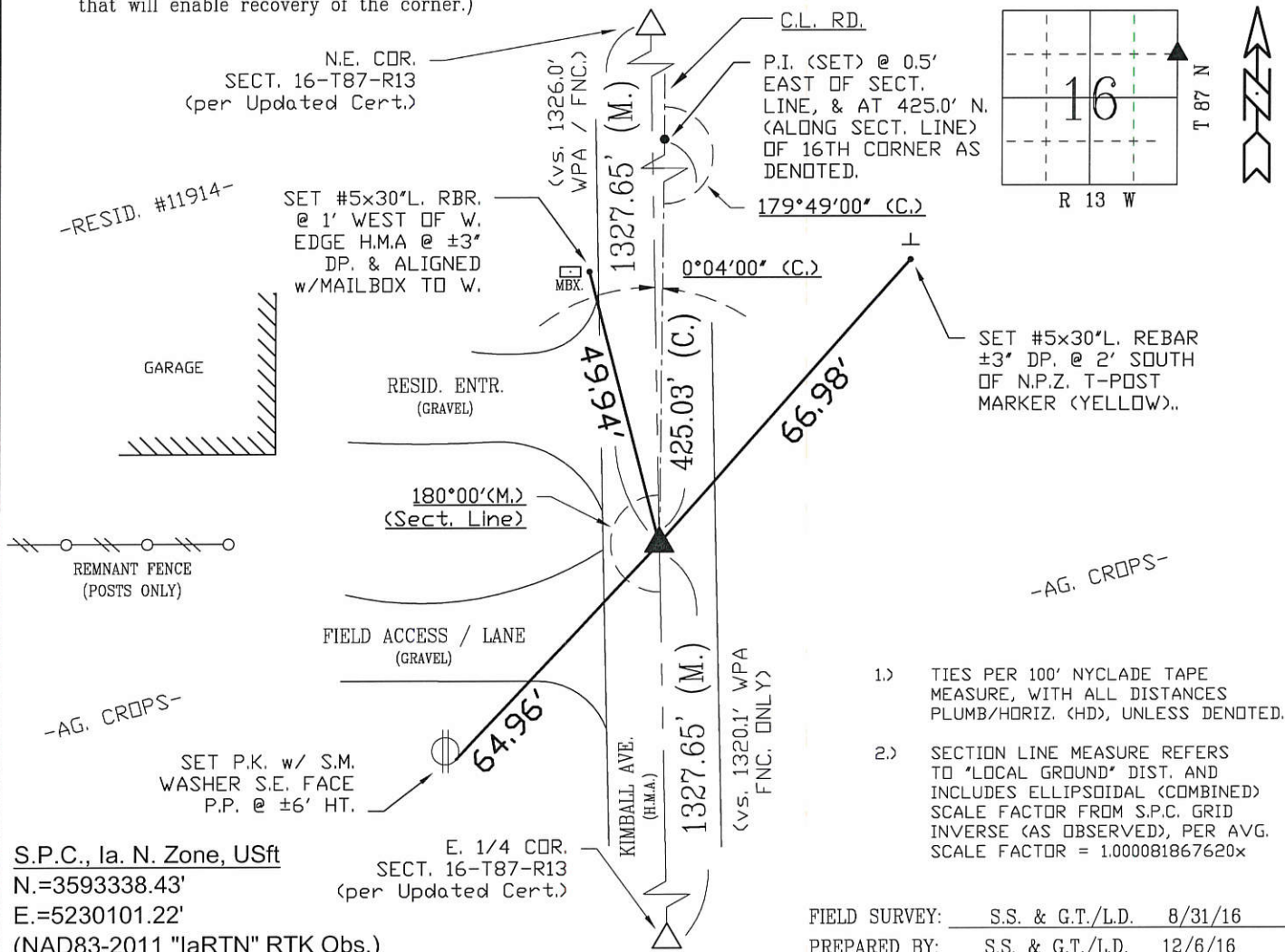
### PLAN VIEW

<sup>13</sup>NOT TO SCALE

BHco Hist. Ties: NONE (N/A)

FIELD BOOK: (n/a), per Field Sketch (G.T.)

(Show a minimum of three reference ties to durable physical objects, relevant monuments and physical conditions that will enable recovery of the corner.)



## CERTIFICATION



I hereby certify that this land surveying document was prepared and the related survey work was performed by me or under my direct personal supervision and that I am a duly licensed Land Surveyor under the laws of the State of Iowa.

Geoffrey Allen Tinker 12/06/2016  
(date)

License Number 15748

My license renewal date is December 31, 2016

Pages or sheets covered by this seal:

This Land Corner Certificate Only.

### LIST CORNERS TO BE INDEXED

<u>Corner</u>	<u>Section</u> -	<u>Township</u> -	<u>Range</u>
N. 16th (East)	16	87 N	13 W
N. 16th (West)	15	87 N	13 W



**PREPARED BY:**

**BLACK HAWK COUNTY  
ENGINEER'S DEPT.  
316 E. FIFTH ST., RM. 211  
WATERLOO, IA. 50705  
PH. 319-833-3008  
FAX. 319-833-3139  
survevor@co.black-hawk.ia.us**