

Reserved for County Recorder's use

2025-07892

RECORDED: 06/06/2025 01:37:06 PM

RECORDING FEE: \$7.00

REVENUE TAX: \$

COMBINED FEE: \$7.00

SANDIE L. SMITH, RECORDER
BLACK HAWK COUNTY, IOWA

Kyle J Helland, 6109 Chancellor Drive, Cedar Falls, Iowa 50613-6916, (319)-266-0161

UNITED STATES PUBLIC LAND SURVEY CORNER CERTIFICATE OF

LAND SURVEY MONUMENTS SITUATED IN SECTION NO 14, TOWNSHIP NO 87 NORTH, RANGE
NO 13 WEST OF THE FIFTH PRINCIPAL MERIDIAN, BLACK HAWK COUNTY, IOWA
PREVIOUSLY RECORDED IN N/A

(SHOW REASON FOR PREPARING THIS CERTIFICATE, THE EVIDENCE AND DETAILED PROCEDURES USED IN ESTABLISHING THE
CORNER POSITIONS AND MONUMENTATION FOUND OR PLACED)

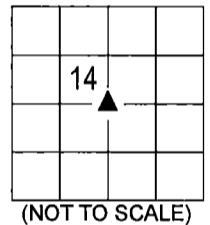
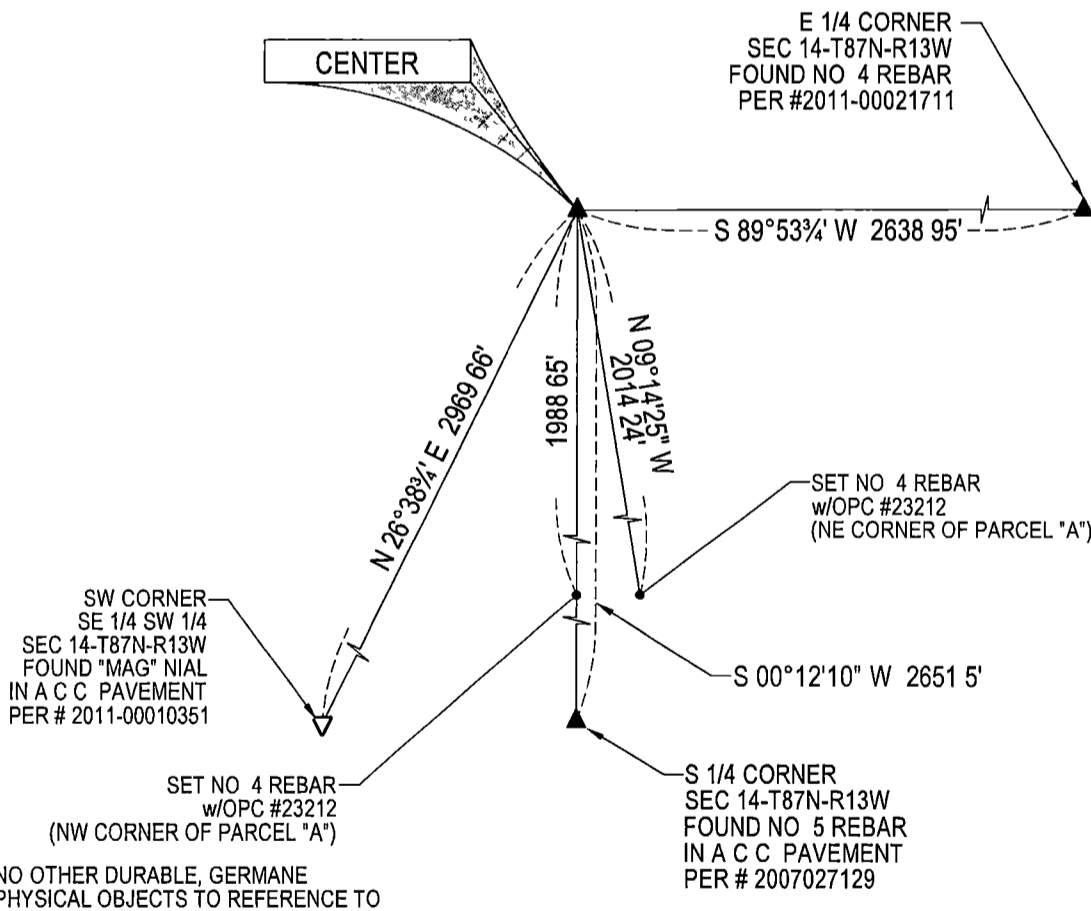
MONUMENT DESCRIPTION AND REMARKS

NO USPLSCC ON FILE. SURVEY COMPLETED IN THE SW 1/4 & SE 1/4 OF SEC 14-T87N-R13W

→ **CENTER.** NO BLACK HAWK COUNTY ENGINEER TIES ARE AVAILABLE SEARCHED AREA WITH MAGNETIC DETECTOR
AND PROBED AROUND A FOUND 2 5"Ø STEEL CORNER POST, NOTHING FOUND THEREFORE UTILIZED SAID 2 5"Ø STEEL
CORNER POST @ BASE

PLAN VIEW

(SHOW A MINIMUM OF THREE REFERENCE TIES TO DURABLE PHYSICAL OBJECTS, RELEVANT MONUMENTS AND PHYSICAL
CONDITIONS THAT WILL ENABLE RECOVERY OF THE CORNER)



NO OTHER DURABLE, GERMANE
PHYSICAL OBJECTS TO REFERENCE TO

SEE ASSOCIATED PLAT OF SURVEY
FOR "RECORDED AS" INFORMATION

(BEARINGS ARE ASSUMED)



HELLAND ENGINEERING & SURVEYING, LTD
6109 Chancellor Drive
Cedar Falls, Iowa 50613-6916
(319)-266-0161

BRASS TAG = 4d NAIL & 13/16"Ø BRASS TAG DRAWN BY CDR
SHINER = 1"Ø STEEL SHINER w/MASONRY NAIL
OPC = PLASTIC CAP (O=ORANGE, R=RED, Y=YELLOW)
(Ø) RECORDED AS FILE NAME 25-138-29 DWG



I hereby certify that this land surveying document was prepared
and the related survey work was performed by me or under my
direct personal supervision and that I am a duly licensed
Professional Land Surveyor under the laws of the State of Iowa.

Kyle J Helland 05/14/2025
Kyle J Helland
License Number 23212
My license renewal date is December 31, 2025
All pages or sheets are covered by this seal except

LIST CORNERS TO BE INDEXED

CORNER	SECTION / TOWNSHIP / RANGE
CENTER	14 87N 13W