

Reserved for County Recorder's use

2025-07891

RECORDED: 06/06/2025 01:37:05 PM

RECORDING FEE: \$7.00

REVENUE TAX: \$

COMBINED FEE: \$7.00

SANDIE L. SMITH, RECORDER  
BLACK HAWK COUNTY, IOWA

Kyle J Helland, 6109 Chancellor Drive, Cedar Falls, Iowa 50613-6916, (319)-266-0161

# UNITED STATES PUBLIC LAND SURVEY CORNER CERTIFICATE OF

LAND SURVEY MONUMENTS SITUATED IN SECTION NO 13, TOWNSHIP NO 87 NORTH, RANGE NO 13 WEST OF THE FIFTH PRINCIPAL MERIDIAN, BLACK HAWK COUNTY, IOWA  
PREVIOUSLY RECORDED IN 329 MISC 944

(SHOW REASON FOR PREPARING THIS CERTIFICATE, THE EVIDENCE AND DETAILED PROCEDURES USED IN ESTABLISHING THE CORNER POSITIONS AND MONUMENTATION FOUND OR PLACED )

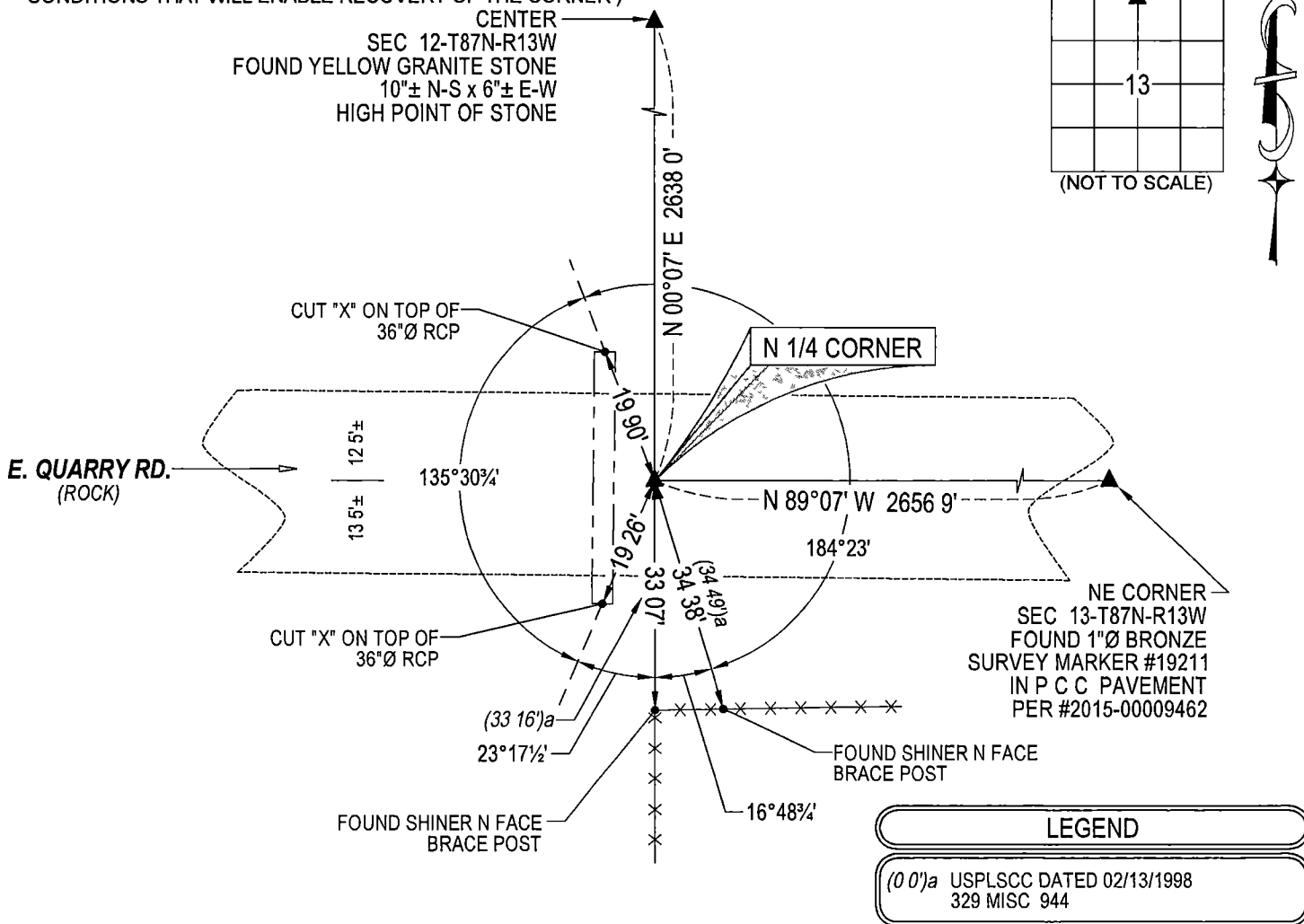
### MONUMENT DESCRIPTION AND REMARKS

MONUMENTATION HAS CHANGED SURVEY COMPLETED IN THE SE 1/4 OF SEC 12-T87N-R13W

→ **N 1/4 CORNER:** USPLSCC DATED 02/13/1998 329 MISC 944 CALLS FOR [FOUND MONUMENTS AS PER COUNTY ENGINEER'S RECORDS SET NEW TIES] SEARCHED AREA WITH MAGNETIC DETECTOR AND FOUND NO 4 REBAR 0 2± DEEP UTILIZED SAID NO 4 REBAR AS CORRECT CORNER

## PLAN VIEW

(SHOW A MINIMUM OF THREE REFERENCE TIES TO DURABLE PHYSICAL OBJECTS, RELEVANT MONUMENTS AND PHYSICAL CONDITIONS THAT WILL ENABLE RECOVERY OF THE CORNER )



SEE ASSOCIATED PLAT OF SURVEY FOR "RECORDED AS" INFORMATION

(BEARINGS ARE ASSUMED)



HELLAND ENGINEERING & SURVEYING, LTD.  
6109 Chancellor Drive  
Cedar Falls, Iowa 50613-6916  
(319)-266-0161

BRASS TAG = 4d NAIL & 13/16"Ø BRASS TAG DRAWN BY CDR  
SHINER = 1"Ø STEEL SHINER w/MASONRY NAIL  
OPC = PLASTIC CAP (O=ORANGE, R=RED, Y=YELLOW)  
(00') RECORDED AS FILE NAME 25-133-24 DWG



I hereby certify that this land surveying document was prepared and the related survey work was performed by me or under my direct personal supervision and that I am a duly licensed Professional Land Surveyor under the laws of the State of Iowa.  
*Kyle J Helland* 05/14/2025  
Kyle J Helland  
License Number 23212  
My license renewal date is December 31, 2025  
All pages or sheets are covered by this seal except

LIST CORNERS TO BE INDEXED			
CORNER	SECTION	TOWNSHIP	RANGE
N 1/4 CORNER	13	87N	13W
S 1/4 CORNER	12	87N	13W