



Doc ID: 007640780001 Type: GEN
Recorded: 06/01/2017 at 11:57:58 AM
Fee Amt: \$7.00 Page 1 of 1
Black Hawk County Iowa
SANDIE L. SMITH RECORDER

File 2017-00020933

WAYNE CLAASSEN ENGINEERING AND SURVEYING, INC.
P.O. BOX 898 WATERLOO, IOWA 50704-0898

PHONE: (VOICE) 319-235-6294
(FAX) 319-235-0028

UNITED STATES PUBLIC LAND SURVEY CORNER CERTIFICATE

Land Survey Monuments situated in Section 12, Township 87 North, Range 13 West, of the Fifth Principal Meridian, Black Hawk County, Iowa.

Previously recorded in MISC. BOOK 329-944 in County Recorder's Office.
(book, page, document number, etc.)

Monument Description and Remarks

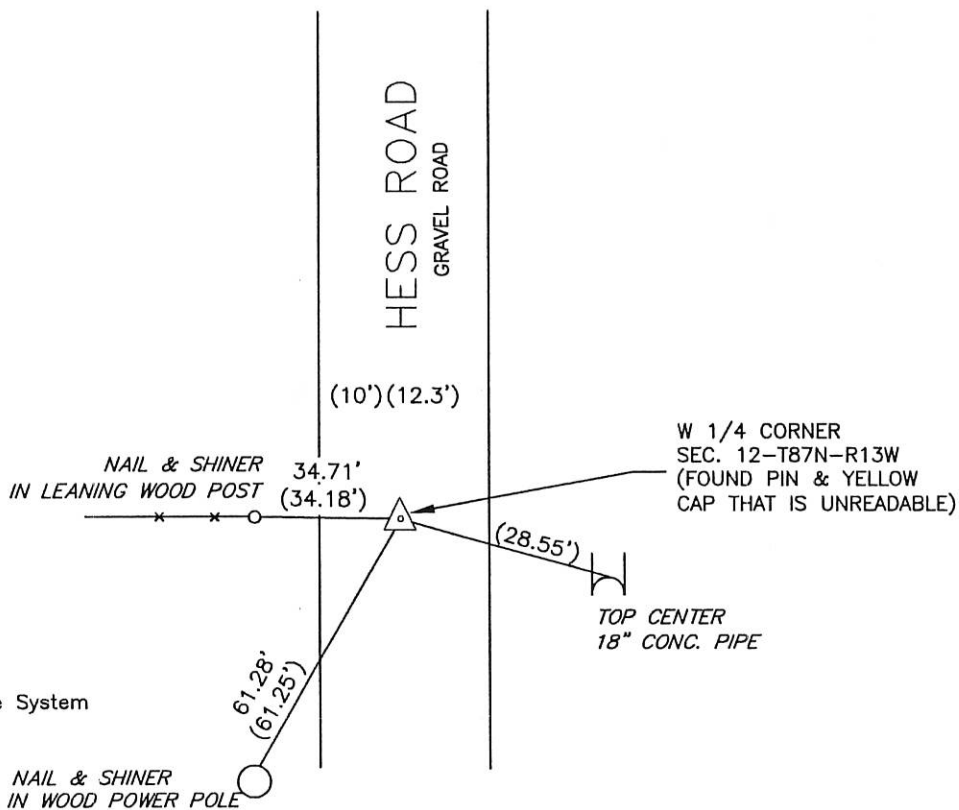
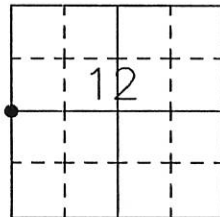
Went to location of Section Corner and did not find Concrete Monument or the 1" pin on the North edge as per above Section Corner Certificate. But, did find pin and yellow cap that was unreadable that reasonably match the location.

PLAN - VIEW

000.00 DENOTES RECORD DIMENSION
FROM SURVEY MISC. BOOK 329-944
(000.00) DENOTES FIELD DIMENSION

Reason for filing certificate:

- ☐ There is no certificate on file with the Recorder's Office.
☐ Accepts corner position which differs from the one shown in above document.
☒ The corner monument was replaced or modified.
☐ The reference ties in above document were incorrect or missing.



Iowa State Plane Coordinate System
(North Zone, 2011 Adj.)
N= 3597469.0
E= 5240643.6
(For reference only)

555-71

I hereby certify that this land surveying document was prepared and the related survey work was performed by me or under my direct personal supervision and that I am a duly Licensed Land Surveyor under the laws of the State of Iowa.

Signature: David L. Schell

David L. Schell, L.S.

Date: MAY 30, 2017 Lic. No. 16775

Pages or Sheets Covered by this Seal: THIS SHEET ONLY.

My license renewal date is December 31, 2018

SEAL

List Corners to be Indexed

Corners	Section	Twp	Range
W 1/4 CORNER,	12	87 N	13 W
E 1/4 CORNER,	11	87 N	13 W

