

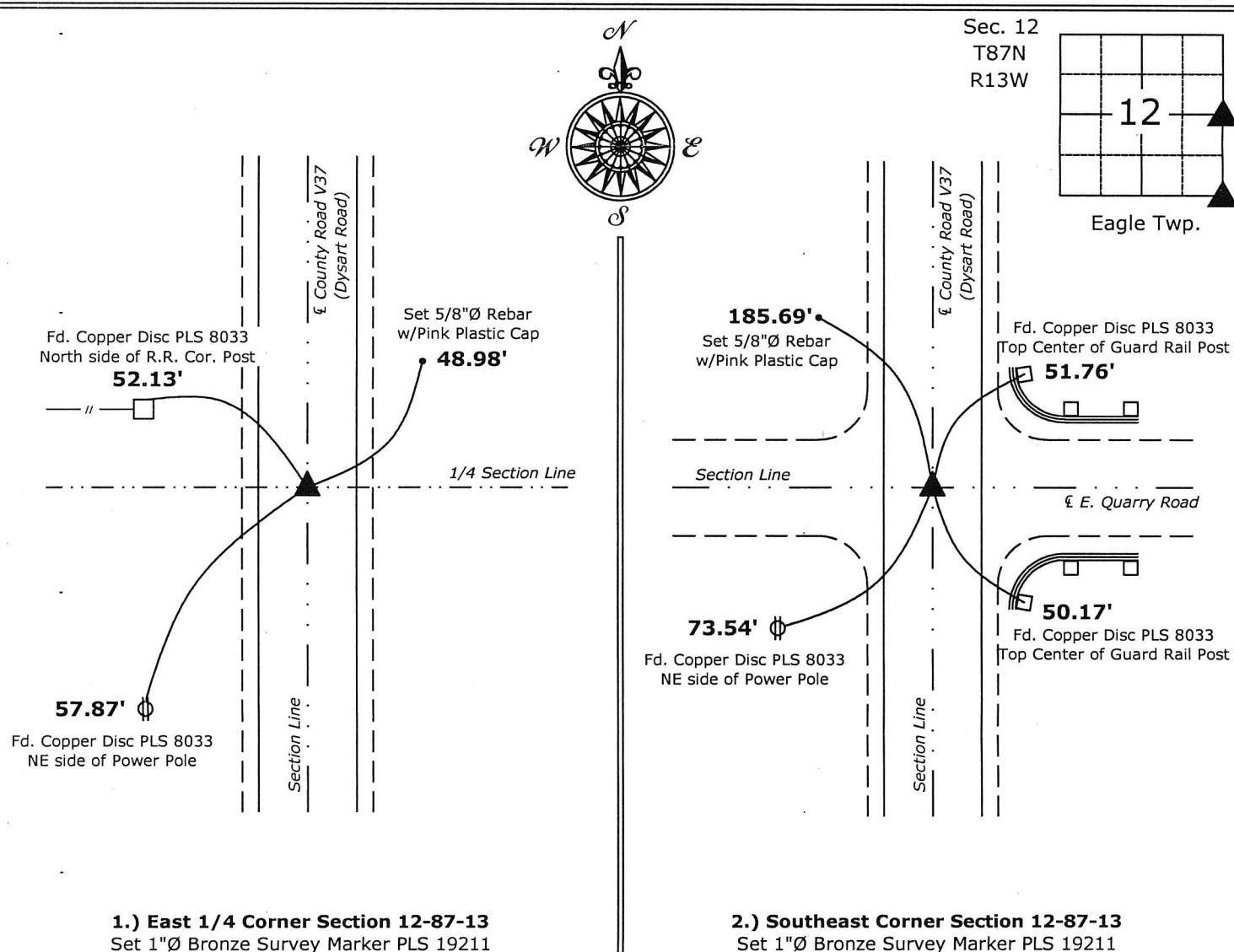
File 2015-00009462

UNITED STATES PUBLIC LAND SURVEY CORNER CERTIFICATE

☐ There is no certificate on file for this corner.
☐ There are no longer three valid ties of record.
 1 & 2 ☒ There are changes to reference ties of record.
 1 & 2 ☒ There is change of monumentation of record.
☐ To clarify description of record monument (ties).

2.) Southeast Corner: Set 1"Ø Bronze Survey Marker PLS 19211 at previous location (Found 5/8"Ø Rebar) by means of coordinates obtained prior to highway reconstruction, Project No. FM-TSF-C007(130)--5B-07.

(Show a minimum of three reference ties to durable physical objects, relevant monuments and physical conditions that will enable recovery of the corner.)



My license renewal date is December 31, 2014.
Sheets covered by this seal: Individual sheet only

List Corners to be Indexed			
Corners	Section	Twp.	Range
E 1/4	12	87	13
SE	12	87	13

Project Number: 2014-135

FB: Black Hawk County 1, Pg. 17

File: S:_C3D Projects\2014\2014-135 (BH Co-Dysart)\2014-135.dwg, 11/17/2014 4:56:55 PM