

Reserved for County Recorder's use

2025-07890

RECORDED: 06/06/2025 01:37:04 PM

RECORDING FEE: \$7.00

REVENUE TAX: \$

COMBINED FEE: \$7.00

SANDIE L. SMITH, RECORDER
BLACK HAWK COUNTY, IOWA

Kyle J Helland, 6109 Chancellor Drive, Cedar Falls, Iowa 50613-6916, (319)-266-0161

UNITED STATES PUBLIC LAND SURVEY CORNER CERTIFICATE OF

LAND SURVEY MONUMENTS SITUATED IN SECTION NO 13, TOWNSHIP NO 91 NORTH, RANGE NO 11 WEST OF THE FIFTH PRINCIPAL MERIDIAN, BLACK HAWK COUNTY, IOWA
PREVIOUSLY RECORDED IN N/A

(SHOW REASON FOR PREPARING THIS CERTIFICATE, THE EVIDENCE AND DETAILED PROCEDURES USED IN ESTABLISHING THE CORNER POSITIONS AND MONUMENTATION FOUND OR PLACED)

MONUMENT DESCRIPTION AND REMARKS

NO USPLSCC ON FILE SURVEY COMPLETED IN THE SE 1/4 OF SEC 12-T87N-R13W

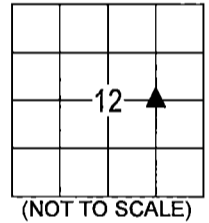
→ **NE CORNER OF THE NW 1/4 SE 1/4:** NO BLACK HAWK COUNTY ENGINEER TIES ARE AVAILABLE NOR ANY OTHER PUBLIC DOCUMENTATION OF THE HISTORY AND PERPETUATION OF CORNER WAS AVAILABLE. SEARCHED AREA WITH MAGNETIC DETECTOR AND PROBED AREA. NOTHING FOUND, THEREFORE SET NO 4 REBAR WITH LICENSE #23212 AT MIDPOINT AND ON LINE BETWEEN THE CENTER AND E 1/4 CORNER, LOCATION FALLS IN LINE WITH CROP CHANGE SOUTH UTILIZED SAID SET NO 4 REBAR WITH LICENSE #23212 AS CORRECT CORNER AND LOCATION FALLS 5'6"± SOUTH OF EXISTING FENCE LINE

PLAN VIEW

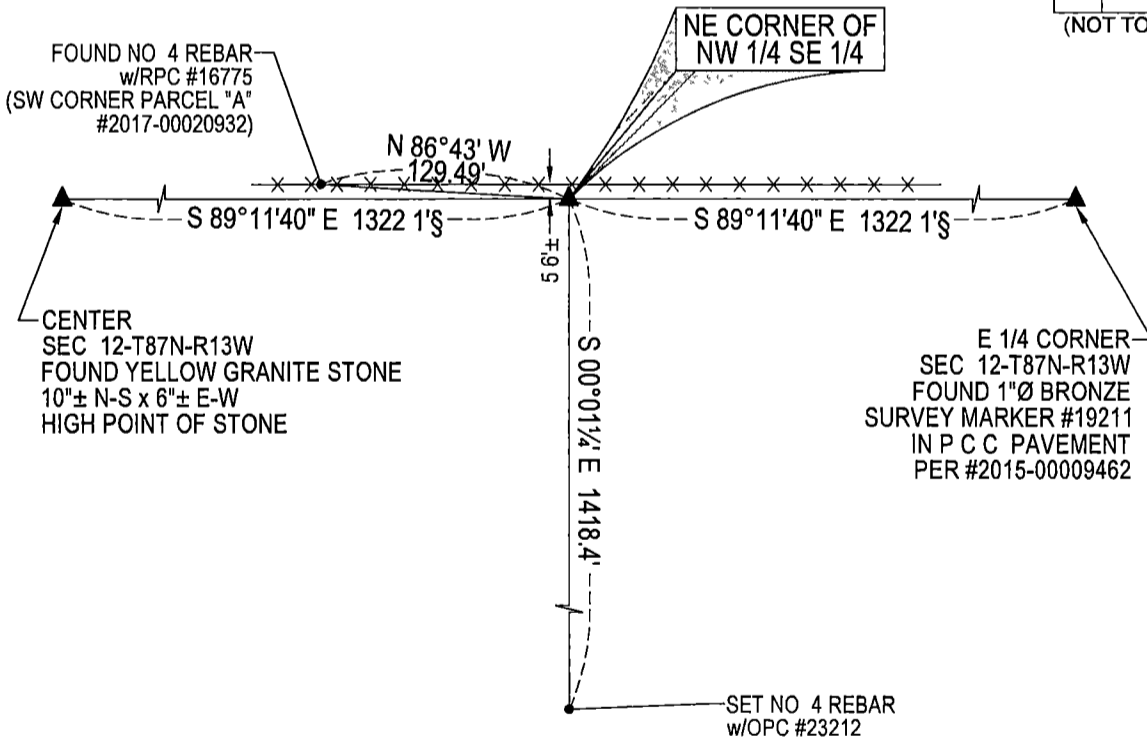
(SHOW A MINIMUM OF THREE REFERENCE TIES TO DURABLE PHYSICAL OBJECTS, RELEVANT MONUMENTS AND PHYSICAL CONDITIONS THAT WILL ENABLE RECOVERY OF THE CORNER)

LEGEND

§ SUBJECT TO ROUNDING ERRORS



(NOT TO SCALE)



NO OTHER DURABLE, GERMANE PHYSICAL OBJECTS TO REFERENCE TO

SEE ASSOCIATED PLAT OF SURVEY FOR "RECORDED AS" INFORMATION

(BEARINGS ARE ASSUMED)



HELLAND ENGINEERING & SURVEYING, LTD
6109 Chancellor Drive
Cedar Falls, Iowa 50613-6916
(319)-266-0161

BRASS TAG = 4d NAIL & 13/16"Ø BRASS TAG DRAWN BY CDR SHINER = 1"Ø STEEL SHINER w/MASONRY NAIL
OPC = PLASTIC CAP (O=ORANGE, R=RED, Y=YELLOW)
(00) RECORDED AS FILE NAME 25-133-41 DWG



I hereby certify that this land surveying document was prepared and the related survey work was performed by me or under my direct personal supervision and that I am a duly licensed Professional Land Surveyor under the laws of the State of Iowa.
Kyle J Helland 05/24/2025
Kyle J Helland
License Number 23212
My license renewal date is December 31, 2025
All pages or sheets are covered by this seal except

LIST CORNERS TO BE INDEXED

CORNER	SECTION / TOWNSHIP / RANGE
NE COR NW 1/4 SE 1/4	12 87N 13W
SE COR SW 1/4 NE 1/4	12 87N 13W
SW COR SE 1/4 NE 1/4	12 87N 13W
NW COR NE 1/4 SE 1/4	12 87N 13W