

Reserved for County Recorder's use

2025-07889

RECORDED: 06/06/2025 01:37:03 PM

RECORDING FEE: \$7.00

REVENUE TAX: \$

COMBINED FEE: \$7.00

SANDIE L. SMITH, RECORDER  
BLACK HAWK COUNTY, IOWA

Kyle J Helland, 6109 Chancellor Drive, Cedar Falls, Iowa 50613-6916, (319)-266-0161

# UNITED STATES PUBLIC LAND SURVEY CORNER CERTIFICATE OF

LAND SURVEY MONUMENTS SITUATED IN SECTION NO 12, TOWNSHIP NO 87 NORTH, RANGE  
NO 13 WEST OF THE FIFTH PRINCIPAL MERIDIAN, BLACK HAWK COUNTY, IOWA  
PREVIOUSLY RECORDED IN N/A

(SHOW REASON FOR PREPARING THIS CERTIFICATE, THE EVIDENCE AND DETAILED PROCEDURES USED IN ESTABLISHING THE  
CORNER POSITIONS AND MONUMENTATION FOUND OR PLACED )

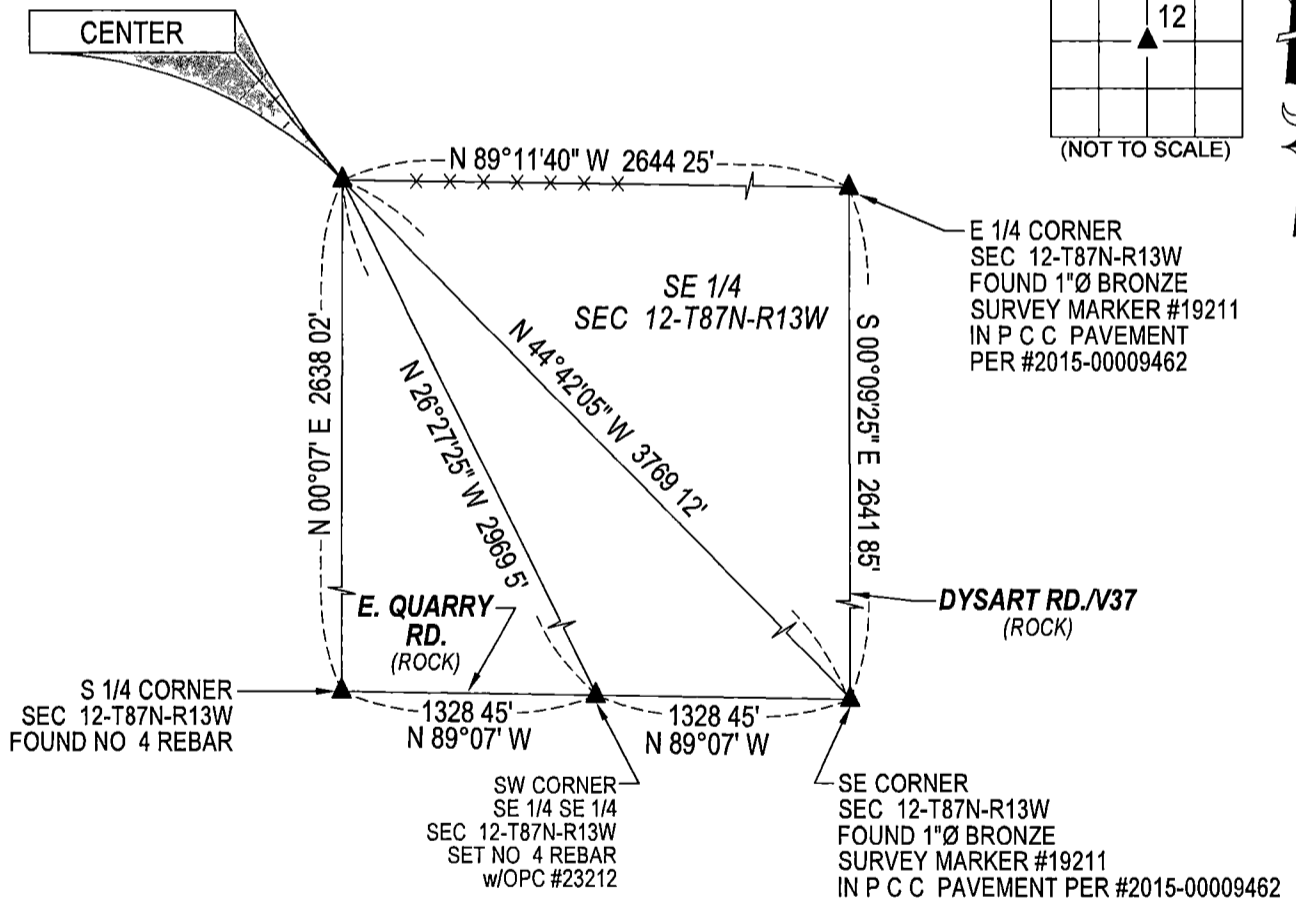
### MONUMENT DESCRIPTION AND REMARKS

NO USPLSCC ON FILE SURVEY COMPLETED IN THE SE 1/4 OF SEC 12-T87N-R13W

→ **CENTER** NO BLACK HAWK COUNTY ENGINEER TIES ARE AVAILABLE NOR ANY OTHER PUBLIC DOCUMENTATION OF  
THE HISTORY AND PERPETUATION OF CORNER WAS AVAILABLE SEARCHED AREA WITH MAGNETIC DETECTOR AND  
EXCAVATED AREA, FOUND BENT 1"Ø STEEL PIPE AND YELLOW GRANITE STONE 10"± N-S x 6"± E-W @ BROKEN OFF  
BASE OF CORNER POST WITH DOWNED FENCE LINES RUNNING EAST, WEST & NORTH THEREFORE UTILIZED SAID  
YELLOW GRANITE STONE 10"± N-S x 6"± E-W (HIGH POINT) @ BROKEN OFF BASE OF CORNER POST AS CORRECT  
CORNER AND RESET 1"Ø STEEL PIPE ON NORTHWESTERLY SIDE OF HIGH POINT OF SAID STONE FOR MAGNETIC  
DETECTION

### PLAN VIEW

(SHOW A MINIMUM OF THREE REFERENCE TIES TO DURABLE PHYSICAL OBJECTS, RELEVANT MONUMENTS AND PHYSICAL  
CONDITIONS THAT WILL ENABLE RECOVERY OF THE CORNER )



NO OTHER DURABLE, GERMANE  
PHYSICAL OBJECTS TO REFERENCE TO

SEE ASSOCIATED PLAT OF SURVEY  
FOR "RECORDED AS" INFORMATION

(BEARINGS ARE ASSUMED)



**HELLAND ENGINEERING & SURVEYING, LTD**  
6109 Chancellor Drive  
Cedar Falls, Iowa 50613-6916  
(319)-266-0161

BRASS TAG = 4d NAIL & 13/16"Ø BRASS TAG DRAWN BY CDR  
SHINER = 1"Ø STEEL SHINER w/MASONRY NAIL  
OPC = PLASTIC CAP (O=ORANGE, R=RED, Y=YELLOW)  
(00') RECORDED AS FILE NAME 25-133-29 DWG



I hereby certify that this land surveying document was prepared  
and the related survey work was performed by me or under my  
direct personal supervision and that I am a duly licensed  
Professional Land Surveyor under the laws of the State of Iowa.  
*Kyle J. Helland 06/14/2025*  
Kyle J. Helland  
License Number 23212  
My license renewal date is December 31, 2025  
All pages or sheets are covered by this seal except

### LIST CORNERS TO BE INDEXED

CORNER	SECTION / TOWNSHIP / RANGE
CENTER	12 87N 13W