

SC
Misc
INDEX
MARGIN
PROOF
COMPARE

BLACK HAWK COUNTY IOWA:SS 23325
Filed for record MAY 12, 1998 at
4:00 PM. and recorded in Book 330
of Misc Page 54
Recorder
Fee 1-5.00/
WAYNE CLAASSEN ENGINEERING AND
SURVEYING INC

WAYNE CLAASSEN ENGINEERING AND SURVEYING, INC.
P.O. BOX 898 WATERLOO, IOWA 50704-0898

PHONE: (VOICE) 319-235-6294
(FAX) 319-235-0028

UNITED STATES PUBLIC LAND SURVEY CORNER CERTIFICATE

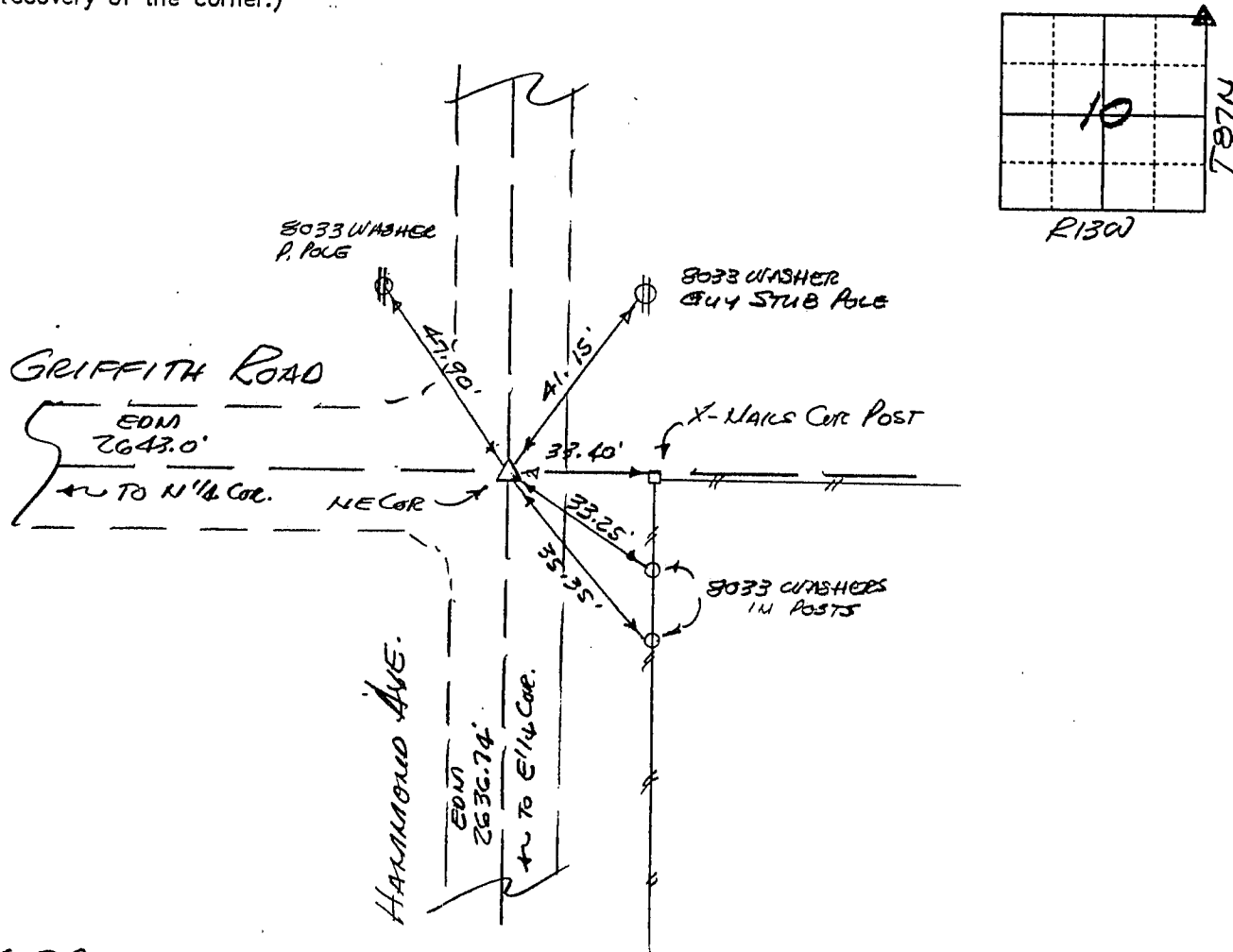
Land Survey Monuments situated in Section 10, Township 87N, Range 13W, of the Fifth Principal Meridian, BLACK HAWK County, Iowa.
Previously recorded in N/A in County Recorder's Office.
(book, page, document number, etc.)

(Show reason for preparing this certificate, the evidence and detailed procedures used in establishing the corner positions and monumentation found or placed.)

Monument Description and Remarks FOUND 8033 CAPPED PIN 6" DEEP IN GRAVEL PER CES
SURVEY NOTES/TIES OF 1983 & 1990. CES FOUND CONC. MON. 13" DEEP IN JULY 1983, SET PIN OVER
& ALONG SIDE. NE COR. 10-87-13

PLAN - VIEW

(Show a minimum of three reference ties to durable physical objects, relevant monuments and physical conditions that will enable recovery of the corner.)



404-28

I hereby certify that the survey work was completed and this certificate was prepared by me or under my direct personal supervision and that I am a duly licensed land surveyor under the laws of the state of Iowa.

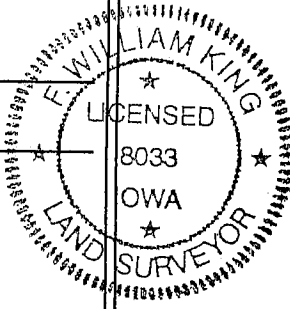
Signature:

F. William King
(Name typed or printed:) F. William King

Date: 5-8-1998

Lic. No. 8033

SEAL



List Corners to be Indexed

Corners	Section	Twp	Range
NE	10	87N	13W

BOOK 330 PAGE 054