

WAYNE CLAASSEN ENGINEERING AND SURVEYING, INC.
P.O. BOX 898 WATERLOO, IOWA 50704-0898

UNITED STATES PUBLIC LAND SURVEY CORNER CERTIFICATE

Land Survey Monuments situated in Section 10, Township 87 North, Range 13 West, of the Fifth Principal Meridian, Black Hawk County County, Iowa.Previously recorded in 330-055 in County Recorder's Office.
(book, page, document number, etc.)

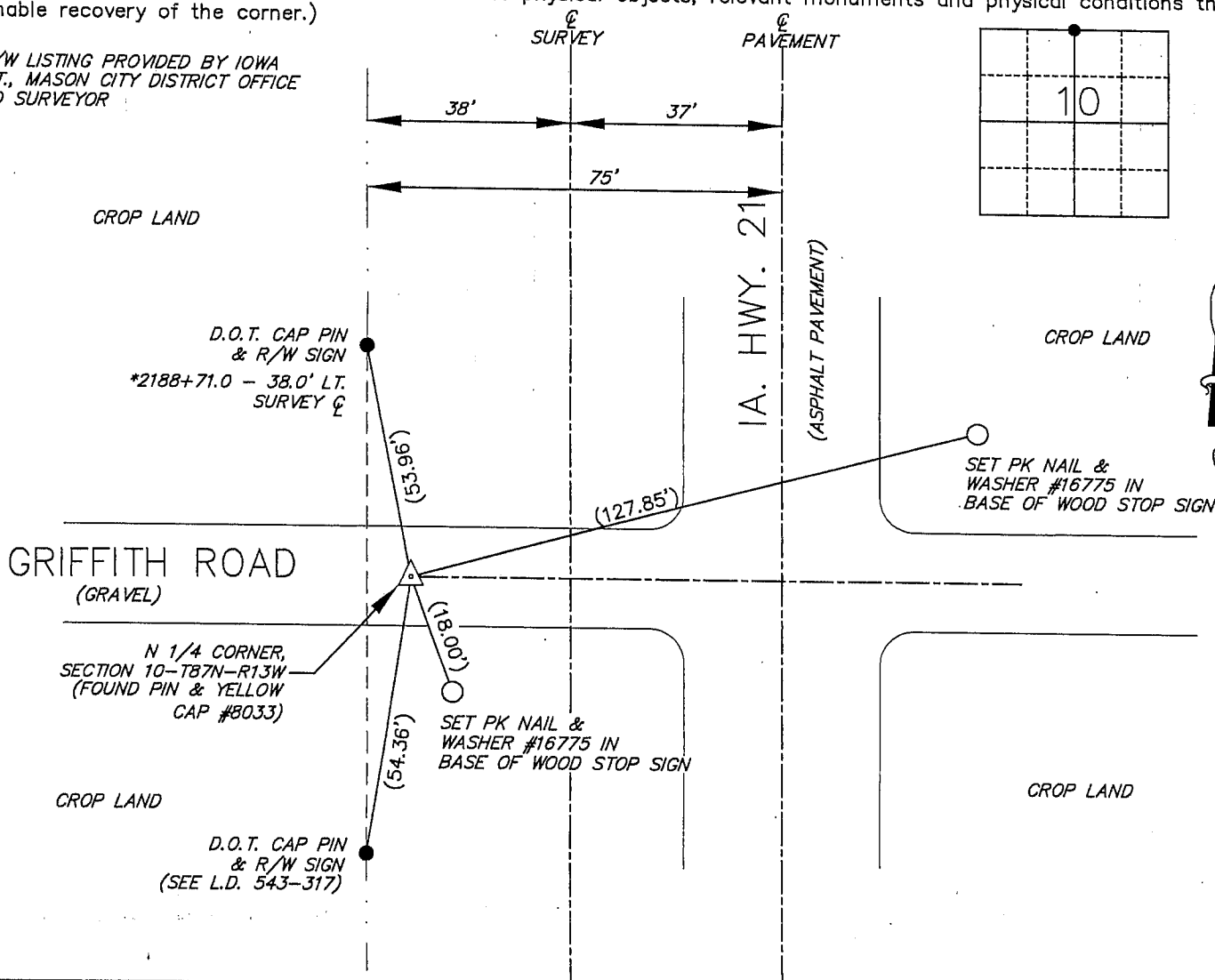
(Show reason for preparing this certificate, the evidence and detailed procedures used in establishing the corner positions and monumentation found or placed.)

Monument Description and Remarks

N 1/4 Corner: Found pin & yellow cap as per corner certificate in Misc. 330-055 with a tie missing. Added two (2) ties along with existing ties found.

PLAN - VIEW

(Show a minimum of three reference ties to durable physical objects, relevant monuments and physical conditions that will enable recovery of the corner.)

* R/W LISTING PROVIDED BY IOWA
D.O.T., MASON CITY DISTRICT OFFICE
LAND SURVEYOR

I hereby certify that this land surveying document was prepared and the related survey work was performed by me or under my direct personal supervision and that I am a duly Licensed Land Surveyor under the laws of the State of Iowa.

Signature: David L. Schell

David L. Schell, L.S.

Date: AUGUST 29, 2007 Lic. No. 16775Pages or Sheets Covered by this Seal: THIS SHEET ONLY.

My license renewal date is December 31, 2008

SEAL

List Corners to be Indexed

Corners	Section	Twp	Range
N 1/4 CORNER,	10	87 N	13 W

