

Paul H. Helland, 1107 Technology Parkway, Cedar Falls, Iowa 50613-6951, (319)-266-0161

UNITED STATES PUBLIC LAND SURVEY CORNER CERTIFICATE
OF

LAND SURVEY MONUMENTS SITUATED IN SECTION NO. 10, TOWNSHIP NO. 87 NORTH, RANGE
NO. 13 WEST OF THE FIFTH PRINCIPAL MERIDIAN, BLACK HAWK COUNTY, IOWA.
PREVIOUSLY RECORDED IN 330 MISC. 53

(SHOW REASON FOR PREPARING THIS CERTIFICATE, THE EVIDENCE AND DETAILED PROCEDURES USED IN ESTABLISHING THE
CORNER POSITIONS AND MONUMENTATION FOUND OR PLACED.)

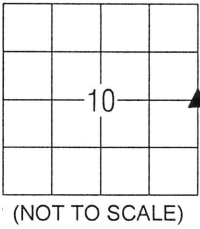
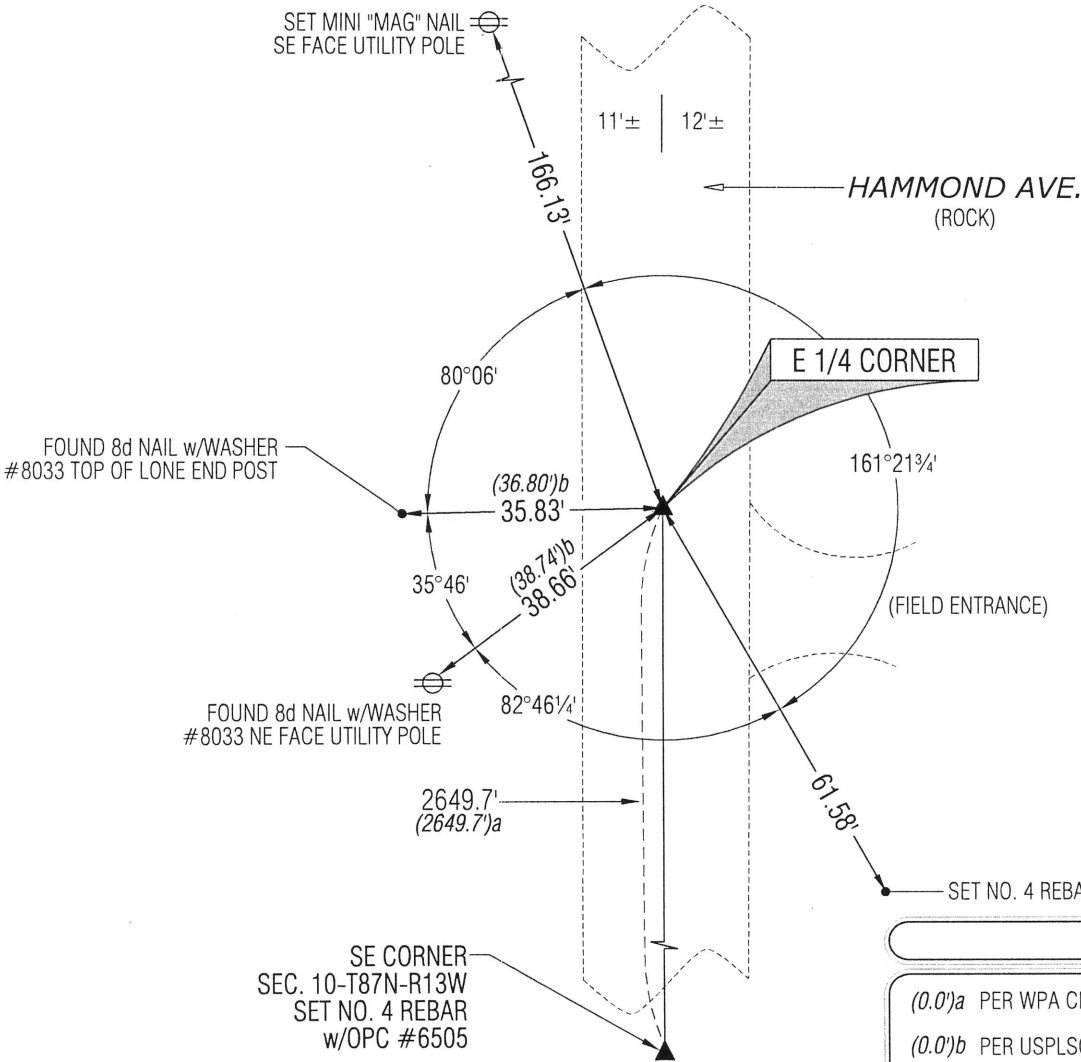
MONUMENT DESCRIPTION AND REMARKS:

ONLY TWO REFERENCE TIES REMAIN. SURVEY COMPLETED IN THE SE 1/4 OF SEC. 10-T87N-R13W.

→ **E 1/4 CORNER:** USPLSCC 330 MISC. 53 DATED 5/8/1998 CALLS FOR [ONLY AVAILABLE TIES WERE WPA 1940 NOTES, ROADWAY WAS SINCE REGRADED & MONUMENT APPARENTLY DESTROYED. DUG 4' X 6' X 2' DEEP HOLE, USED PROD ROD IN BOTTOM & SIDES, HIT NOTHING - NO INDICATION WITH ELECTRONIC LOCATOR OF WPA NOTED IRON BAR UNDER MONUMENT. USED FENCE LINE TO WEST FOR N-S LOCATION & SPLIT OF ROADWAY FOR E-W LOCATION. WPA CHAINAGE FROM NORTH HITS 2' SOUTH OF THIS LOCATION (EDM HORIZ DIST 1998). HILL TO NORTH JUSTIFIES ADJUSTMENT IN CHAINAGE. SET 8033 CAPPED 1/2"Ø X 24" REBAR.]. FOUND DAMAGED YPC PER SAID USPLSCC WITH ONLY TWO TIES REMAINING.

PLAN VIEW

(SHOW A MINIMUM OF THREE REFERENCE TIES TO DURABLE PHYSICAL OBJECTS, RELEVANT MONUMENTS AND PHYSICAL CONDITIONS THAT WILL ENABLE RECOVERY OF THE CORNER.)



LEGEND

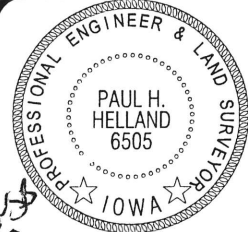
(0.0')a PER WPA CHAINING NOTES DATED 5/17/1940
(0.0')b PER USPLSCC 330 MISC. 53 DATED 5/8/1998

(BEARINGS ARE ASSUMED)



HELLAND ENGINEERING & SURVEYING, LTD.
1107 Technology Parkway
Cedar Falls, Iowa 50613-6951
(319)-266-0161

SHINER = 8d NAIL & 1 5/16"Ø METAL SHINER
BRASS TAG = 8d NAIL & 13/16"Ø BRASS TAG
OPC = PLASTIC CAP (O=ORANGE, R=RED, Y=YELLOW)
(00') RECORDED AS FILE NAME: 13-147-22.DWG



I hereby certify that this land surveying document was prepared
and the related survey work was performed by me or under my
direct personal supervision and that I am a duly licensed
Professional Land Surveyor under the laws of the State of Iowa.
Paul H. Helland
License Number 6505
My license renewal date is December 31, 2013.
All pages or sheets are covered by this seal except:

LIST CORNERS TO BE INDEXED			
CORNER	SECTION	TOWNSHIP	RANGE
E 1/4 CORNER	10	87N	13W
W 1/4 CORNER	11	87N	13W