

U.S. (IA.) PUBLIC LAND SURVEY

CORNER CERTIFICATE (Ia. 355.11)

B.H. Co. PROJECT: FM-C007(139)--55-07

KIMBALL AVE. (V27) RESURFACING PROJECT (2016)

COLD-IN-PLACE RECYCLING w/ HMA RESURFACING

INDEX OF ABBREVIATIONS

(M) = "Measured" Dimension
(P) = "Platted" Dimension
(R) = "Record" Dimension
(C) = "Calculated" Dimension
(G) = "per George Miller Survey (BHCO Surveyor 1858-1860)"
(B) = "per John Ball Survey (BHCO Surveyor 1866-1891)"
(N) = "per Nathan Barber Survey (BHCO Surveyor 1908-1931)"
"NP" = Reflectorless EDM Meas
"MLM" = Indirect Measure
"CM" = Concrete Monument
"SM" = Survey Marker Spike/Tag
"PK" = PK/MAG Nail Brand Style
"WPA" = Works Progress Admin. Surveys (late 1930's to early 1940's)
"G" = per George Miller Survey (BHCO Surveyor 1858-1860)
"B" = per John Ball Survey (BHCO Surveyor 1866-1891)
"N" = per Nathan Barber Survey (BHCO Surveyor 1908-1931)



Doc ID: 007222920001 Type: GEN
Recorded: 12/02/2016 at 03:37:53 PM
Fee Amt: \$0.00 Page 1 of 1
Black Hawk County Iowa
SANDIE L. SMITH RECORDER

File 2017-00010392

Land Survey Monument(s) situated in Section 9, Township 87 N., Range 13 W., of the Fifth Principal Meridian (5th P.M.), BLACK HAWK County, Iowa.
Previously recorded in File (Fee) 2011, Page 023679, in County Recorder's Office.
(Show reason for preparing this certificate): The corner monument has been Replaced or Modified, per Ia. Code 355.11(1)(c)

(Evidence and detailed procedures used in establishing the corner position(s) and monumentation found or placed.)

Monument Description and Remarks: E. 1/4 COR.

CORNER RESET & TIES UPDATED PER COLD-IN-PLACE RECYCLING & H.M.A. RESURF. PROJECT FM-C007(139)--55-07. PRIOR TO RESURF. PROJECT, FOUND 3/4" IRON BAR PER CURRENT COR. CERT. & TEMP. REF. COR. LOC. PER RTK GPS. AFTER 3" DP. MILL (RECYCLE), NO SOUNDING REMAINED @ ±RTK REFERENCE LOCATION w/ NO FURTHER EXCAVATION. PVMT. RESURFACED w/ +3" (1.5" INT. & 1.5" SURF.) H.M.A. PAVING. AFTER H.M.A. RESURFACE, RESET CORNER WITH 6"L. MAG SPIKE w/ MTL. WASHER (PLS #15748) ON C.L. (±) H.M.A. PAVEMENT JOINT, AND ALIGNED ±5' NORTH OF PINE (ARBORVITAE) TREE ROW TO WEST, ALONG NORTH SIDE OF RESID. PROPERTY.

Software: TopSurv v.8.2.3 w/FC-2500

Project Point ID: 1010

PLAN VIEW

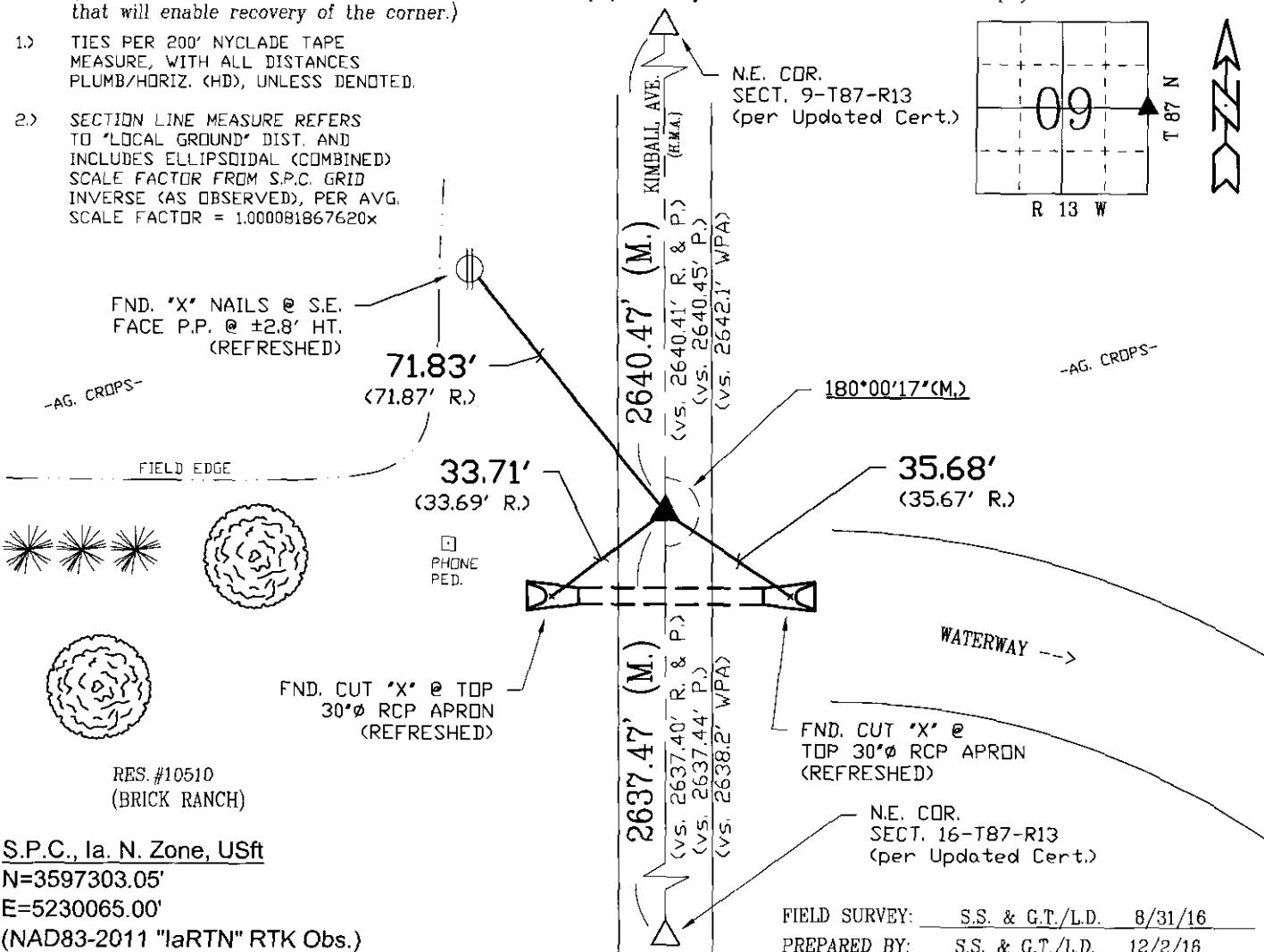
"NOT TO SCALE"

BHCO Hist. Ties: BK. #1000 p.9 87-13

FIELD BOOK: (n/a), per Draft Cert. (S.S.)

(Show a minimum of three reference ties to durable physical objects, relevant monuments and physical conditions that will enable recovery of the corner.)

- 1.) TIES PER 200' NYCLADE TAPE MEASURE, WITH ALL DISTANCES PLUMB/HORIZ. (H.D), UNLESS DENOTED.
- 2.) SECTION LINE MEASURE REFERS TO "LOCAL GROUND" DIST. AND INCLUDES ELLIPSOIDAL (COMBINED) SCALE FACTOR FROM S.P.C. GRID INVERSE (AS OBSERVED), PER AVG. SCALE FACTOR = 1.000081867620x



S.P.C., Ia. N. Zone, USft

N=3597303.05'

E=5230065.00'

(NAD83-2011 "IaRTN" RTK Obs.)

FIELD SURVEY: S.S. & G.T./L.D. 8/31/16

PREPARED BY: S.S. & G.T./L.D. 12/2/16

CERTIFICATION

I hereby certify that this land surveying document was prepared and the related survey work was performed by me or under my direct personal supervision and that I am a duly licensed Land Surveyor under the laws of the State of Iowa.

Geoffrey Allen Tinker 12/02/2016
Geoffrey Allen Tinker (date)

License Number 15748

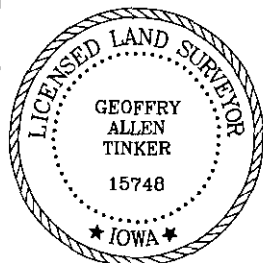
My license renewal date is December 31, 2016

Pages or sheets covered by this seal:

This Land Corner Certificate Only.

LIST CORNERS TO BE INDEXED

Corner	Section -	Township -	Range
E. 1/4 Cor.	9	87 N.	13 W.
W. 1/4 Cor.	10	87 N.	13 W.



PREPARED BY:
BLACKHAWK COUNTY
ENGINEER'S DEPT.
316 E. FIFTH ST., RM. 211
WATERLOO, IA. 50703
PH. 319-833-3008
FAX. 319-833-3139

surveyor@co.black-hawk.ia.us

File Number: 2017-00010392 Seq: 1